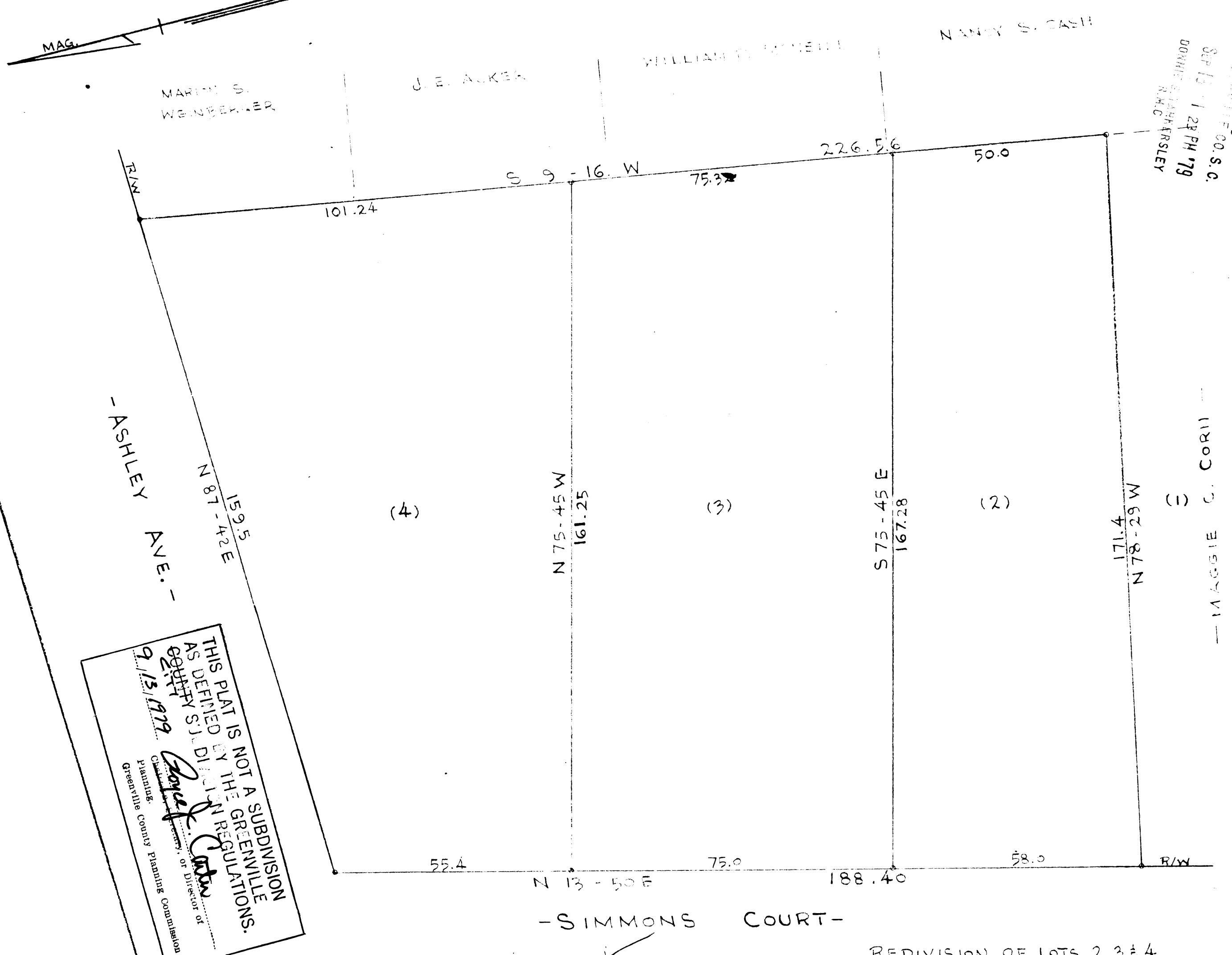
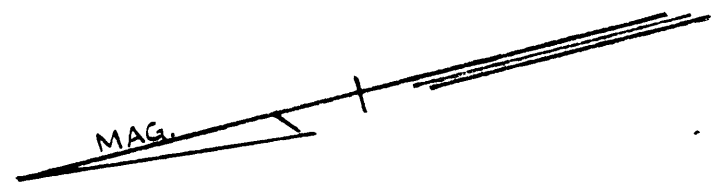
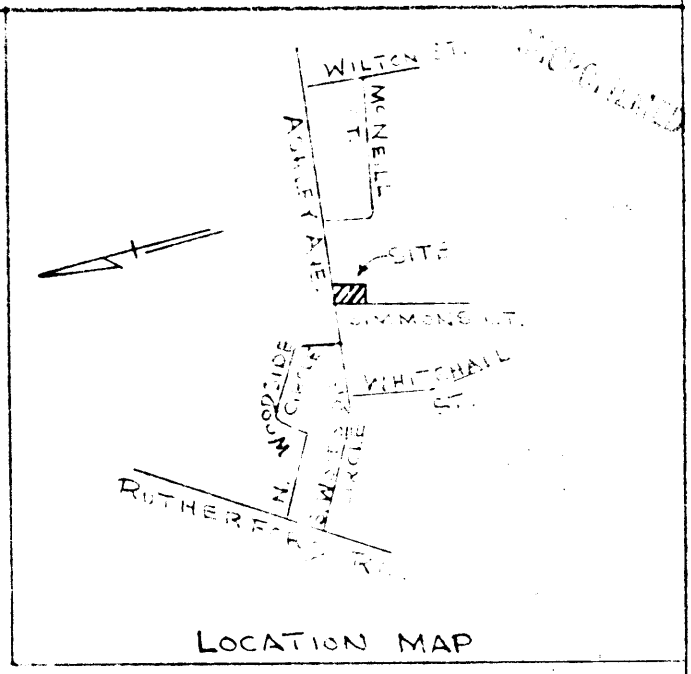


FILED
GREENVILLE CO. S.C.
SEP 12 3 25 PM '79
DONNIE O. STARKERSLEY
R.M.C.



FILED
GREENVILLE CO. S.C.
SEP 13 1 28 PM '79
DONNIE O. STARKERSLEY
R.M.C.

THIS PLAT IS NOT A SUBDIVISION
AS DEFINED BY THE REGULATIONS,
EQUITY ACT
9/13/1979
Director of
Greenville County Planning Commission

I CERTIFY THAT THIS PLAT WAS PREPARED
FROM AN ACTUAL FIELD SURVEY & THAT IT WAS
MADE UNDER MY SUPERVISION.

o - IRON PINS AT
ALL CORNERS

PLAT No. 3320

8891 7-0-2

REDIVISION OF LOTS 2, 3 & 4
FOR
L. S. COCHRAN &
C. R. ROBBINS
GREENVILLE, S.C.
SCALE 1"=20' SEPT. 5, 1979

PIEDMONT ENGINEERS ARCHITECTS & PLANNERS - GREENVILLE, S.C.