

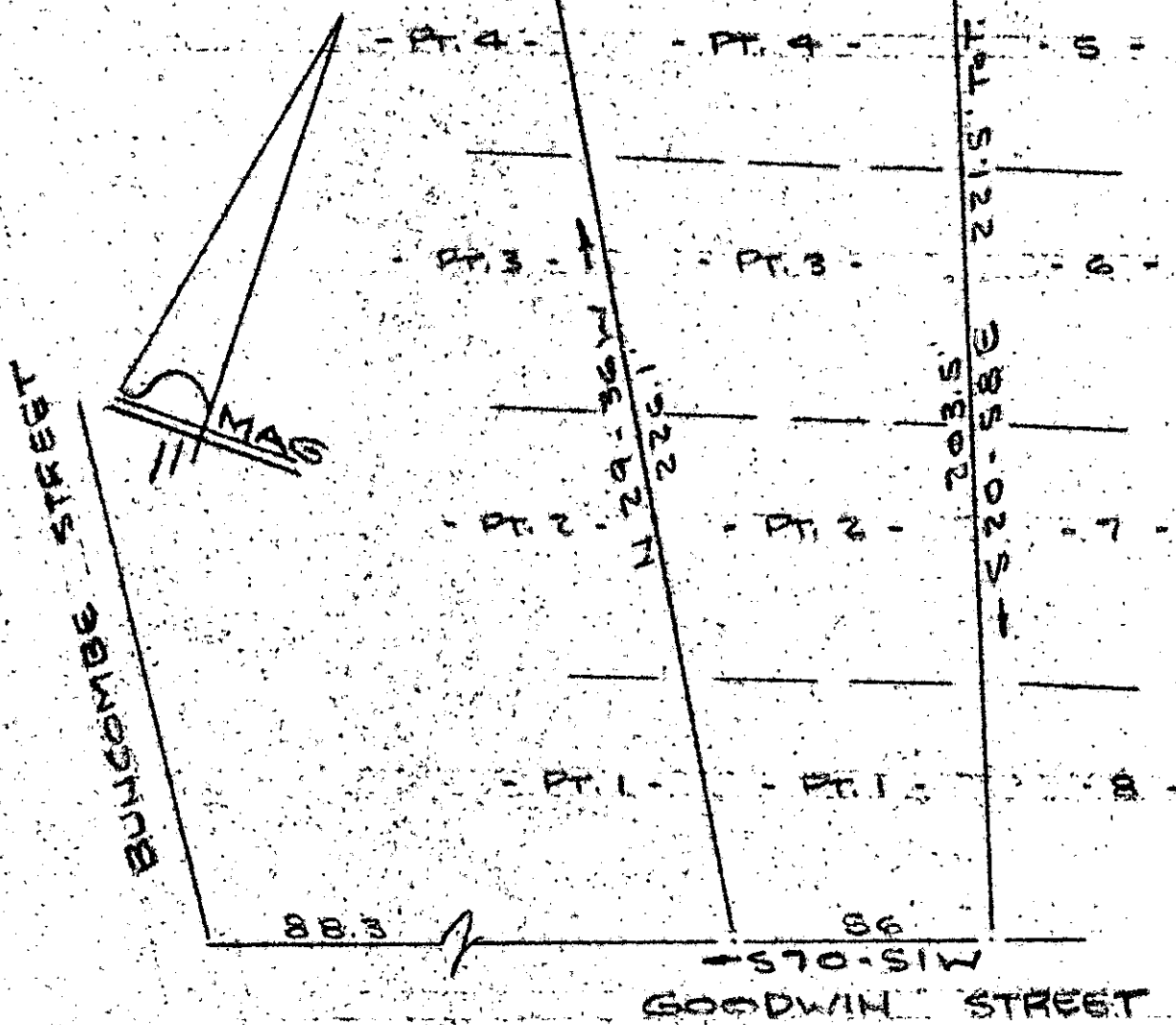
MICROFILMED

WALTER GOLDSMITH ET AL

N 71-27E 90

INGRESS & EGRESS RETAINED BY

EASEMENT TO BE MULBERRY CORP.



PROPERTY OF  
 MULBERRY CORP.  
 GREENVILLE, SOUTH CAROLINA  
 SCALE: 1" = 40'

GCTD - 2A129 79

502

7-N-5

8617

AUG 29 1979

FILED  
 GREENVILLE CO. S. C.  
 AUG 29 3 49 PM '79  
 DONNIE S. TANKERSLEY  
 R.M.C.

CAROLINA SURVEYING CO.  
 112 MAINLY ST.  
 GREENVILLE, S. C.

R. B. Brubaker

