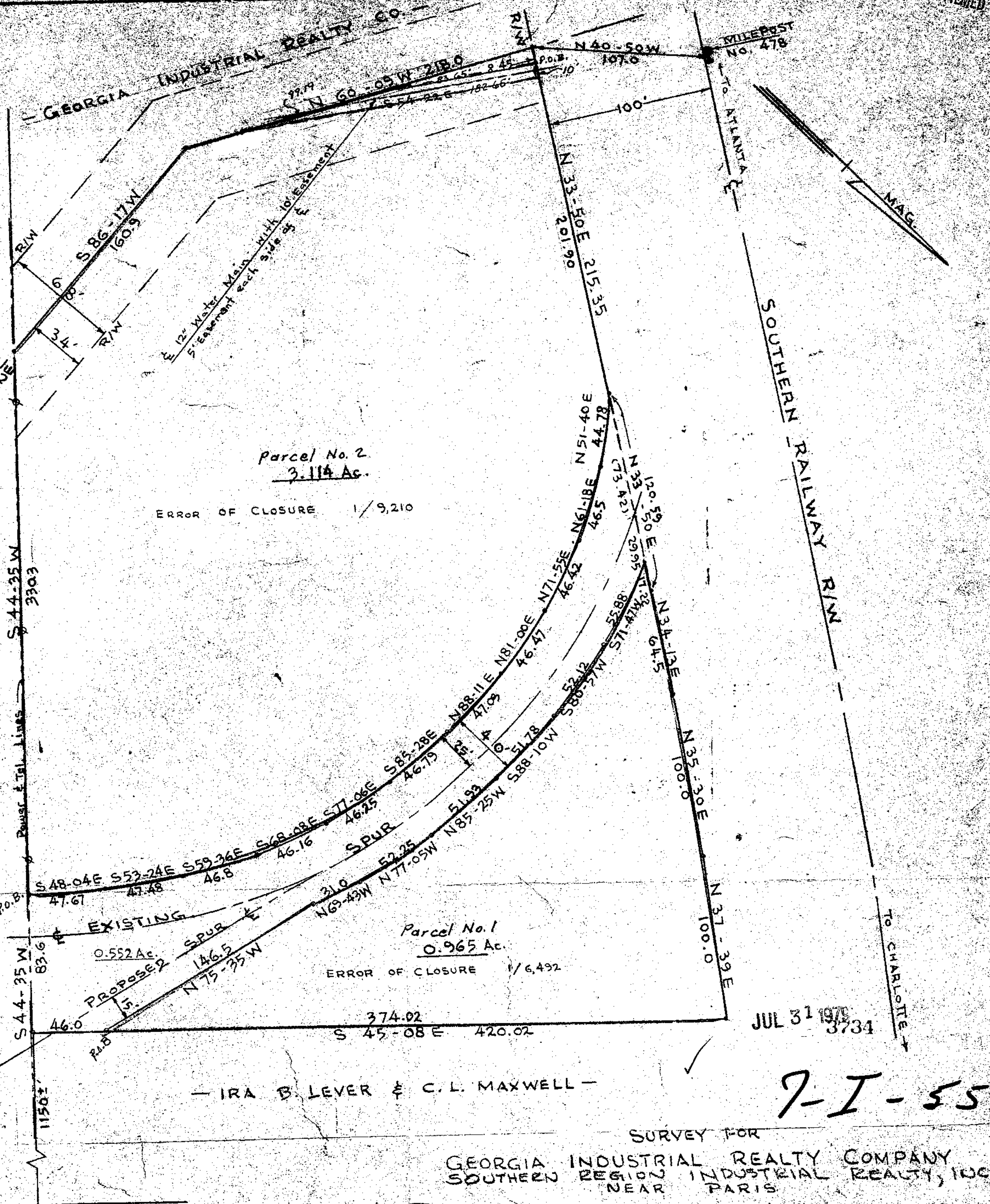


MICROFILMED

CR. FILED
NO. 80-80
JUL 27 11-79
DORRIS TANKERSLEY
P.M.C.



Parcel No. 2
3.114 Ac.

ERROR OF CLOSURE 1/9,210

Parcel No. 1
0.965 Ac.

ERROR OF CLOSURE 1/6,492

JUL 31 1978
3734

IRA B. LEVER & C. L. MAXWELL

7-I-55

(OLD SEVIER CAMP ROAD) S.C. RD. NO. 21



SURVEY FOR
GEORGIA INDUSTRIAL REALTY COMPANY
SOUTHERN REGION INDUSTRIAL REALTY, INC.
NEAR PARIS

GREENVILLE COUNTY, S.C.
SCALE 1"=50'
MAR. 12, 1977 Rev. 10/11/78
REV. APRIL 4, 1977
REV. MAY 24, 1977

DRAWING NO. TC-77-0028
FILE 107-3-13974
PIEDMONT ENGINEERS, ARCHITECTS & PLANNERS
GREENVILLE, S.C.

NOTE IRON PINS AT ALL CORNERS