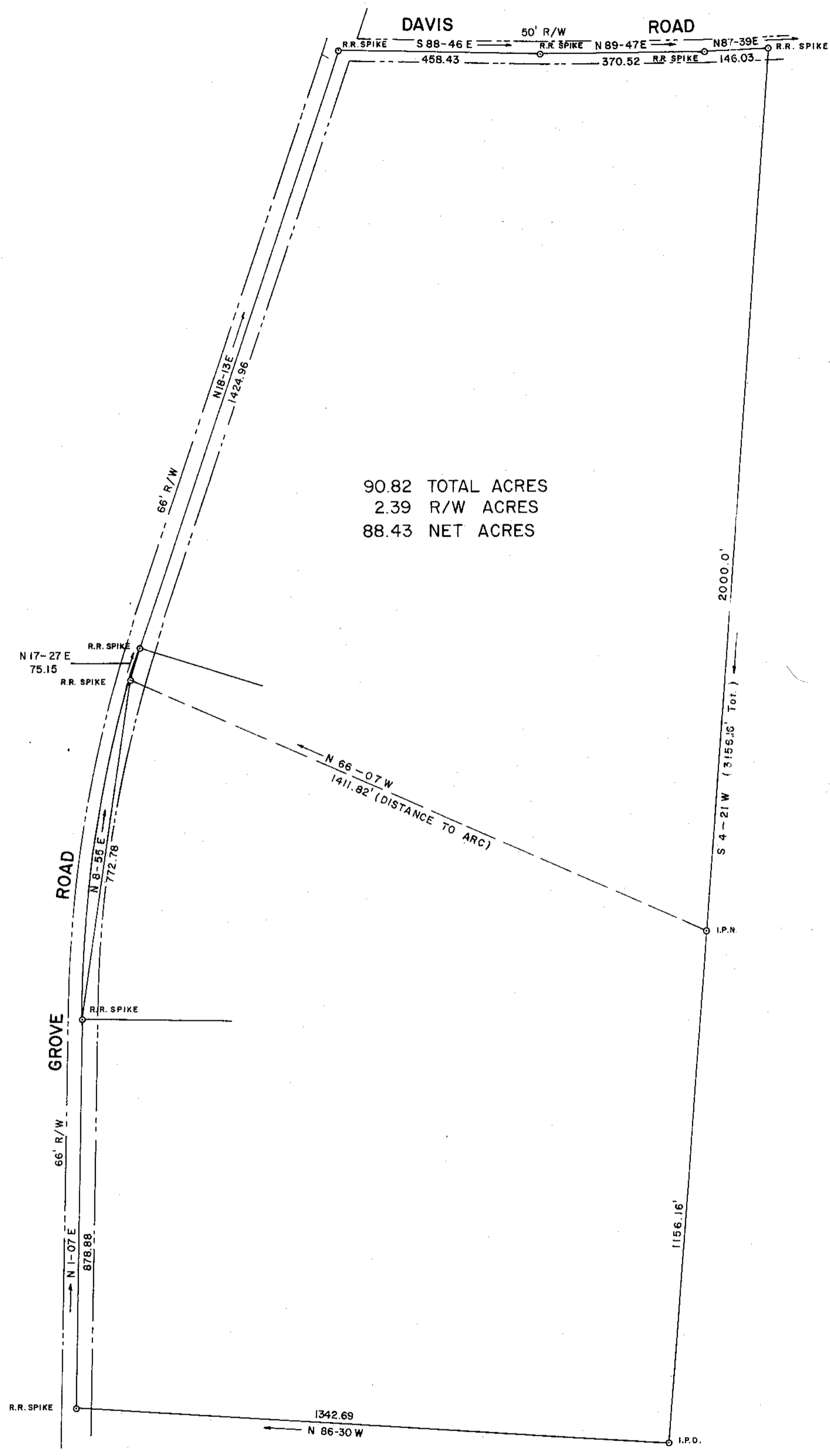
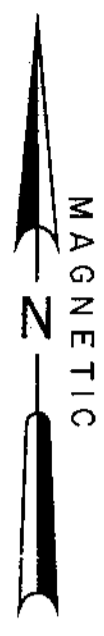


REPROFILMED

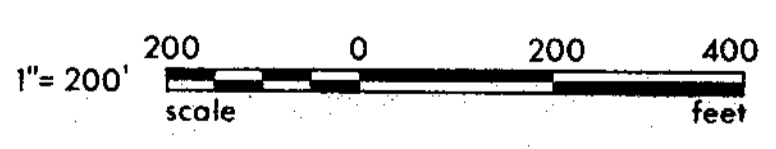


90.82 TOTAL ACRES  
2.39 R/W ACRES  
88.43 NET ACRES

L = 162° 54' 18"  
Δ = 17° 05' 42"  
T = 428.34'  
C = 847.17'  
E = 32.01'  
D = 2° 00' 37"  
R = 2849.95'  
L = 850.32'

FILED  
GREENVILLE CO. S. C.  
JUN 7 4 09 PM '79  
DONNIE S. TINKERSLEY  
R.M.C.

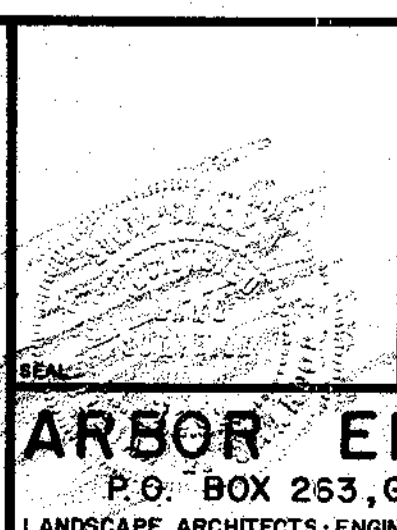
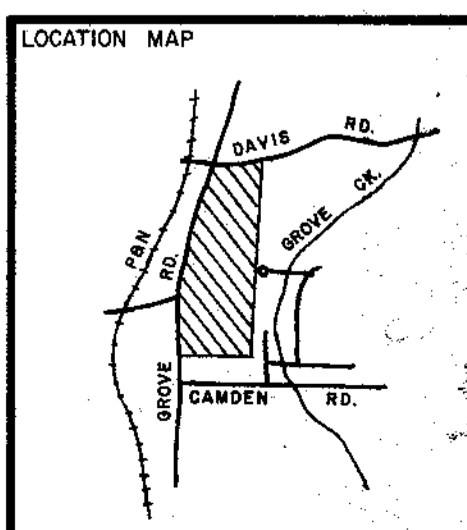
✓ 7G-14  
JUN 7 1979 36322



GCTO 3 JUN 7 79 544

I hereby certify that the ratio of precision of the field survey is 1/6000 as shown hereon and the area was determined by the coordinate method of area calculation.

*William N. Clark* # 7261  
5 MAY 1979 CORRECTED & REVISED



PROPERTY PLAT OF  
**LAKESIDE PARK**  
GREENVILLE COUNTY  
RECREATION COMMISSION

GREENVILLE SOUTH CAROLINA

DRAWN STH	DESIGN WNS	CHECK WNS	DATE MAR 79
SCALE 1" = 200'		FILE	DWG. NO. 79001-06

ARBOR ENGINEERING  
P.O. BOX 263, GREENVILLE, S.C.  
LANDSCAPE ARCHITECTS · ENGINEERS · RECREATIONAL PLANNERS