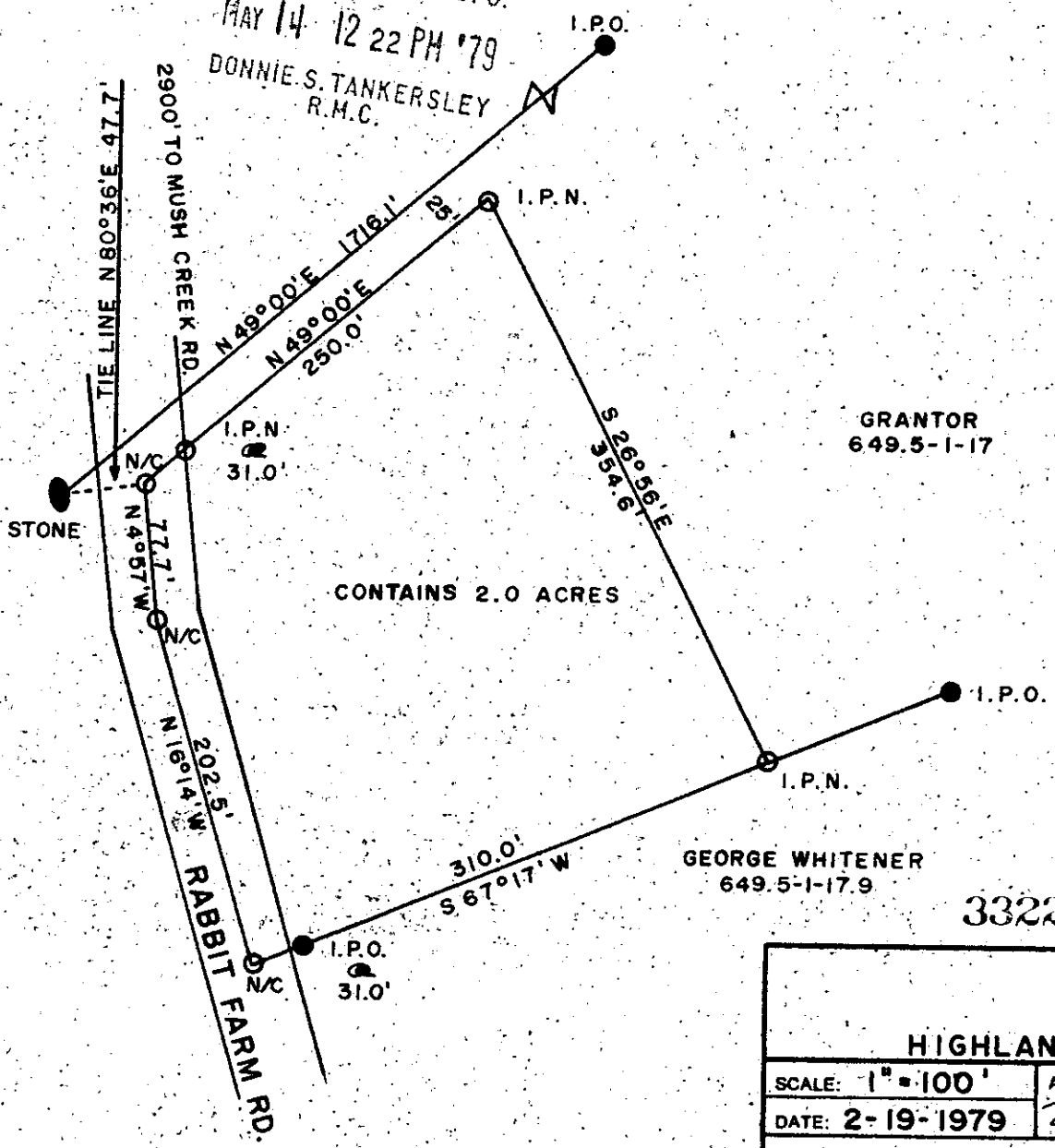


FILED  
 GREENVILLE CO. S. C.  
 MAY 14 12 22 PM '79

DONNIE S. TANKERSLEY  
 R.M.C.

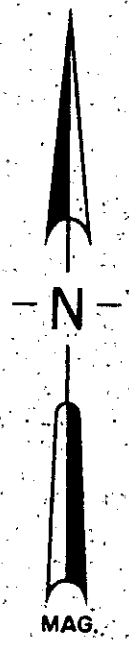


CONTAINS 2.0 ACRES

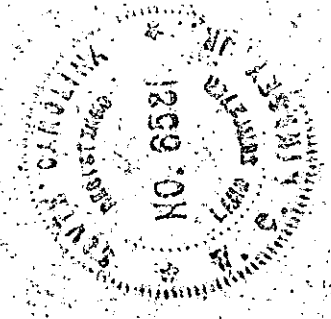
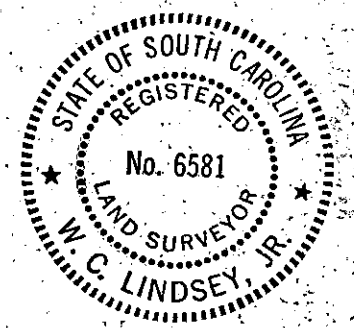
GRANTOR  
 649.5-1-17

GEORGE WHITENER  
 649.5-1-17.9

33223



MAY 14 1979



J. J. BAYNE ESTATE LOCATED IN HIGHLAND TWP., GREENVILLE CO., S.C.		
SCALE: 1" = 100'	APPROVED BY <i>W.C. Lindsey Jr.</i>	DRAWN BY: W.C.L.
DATE: 2-19-1979		
SURVEYED FOR BOBBY WHITLOCK		
SURVEYED BY LINDSEY & ASSOC.		DRAWING NUMBER 1112

✓ 7E-90

MICROFILMED