

FILED
GREENVILLE CO. S. C.
FEB 28 2 43 PM '79
DORNE S. TANKERSLEY
R.M.C.

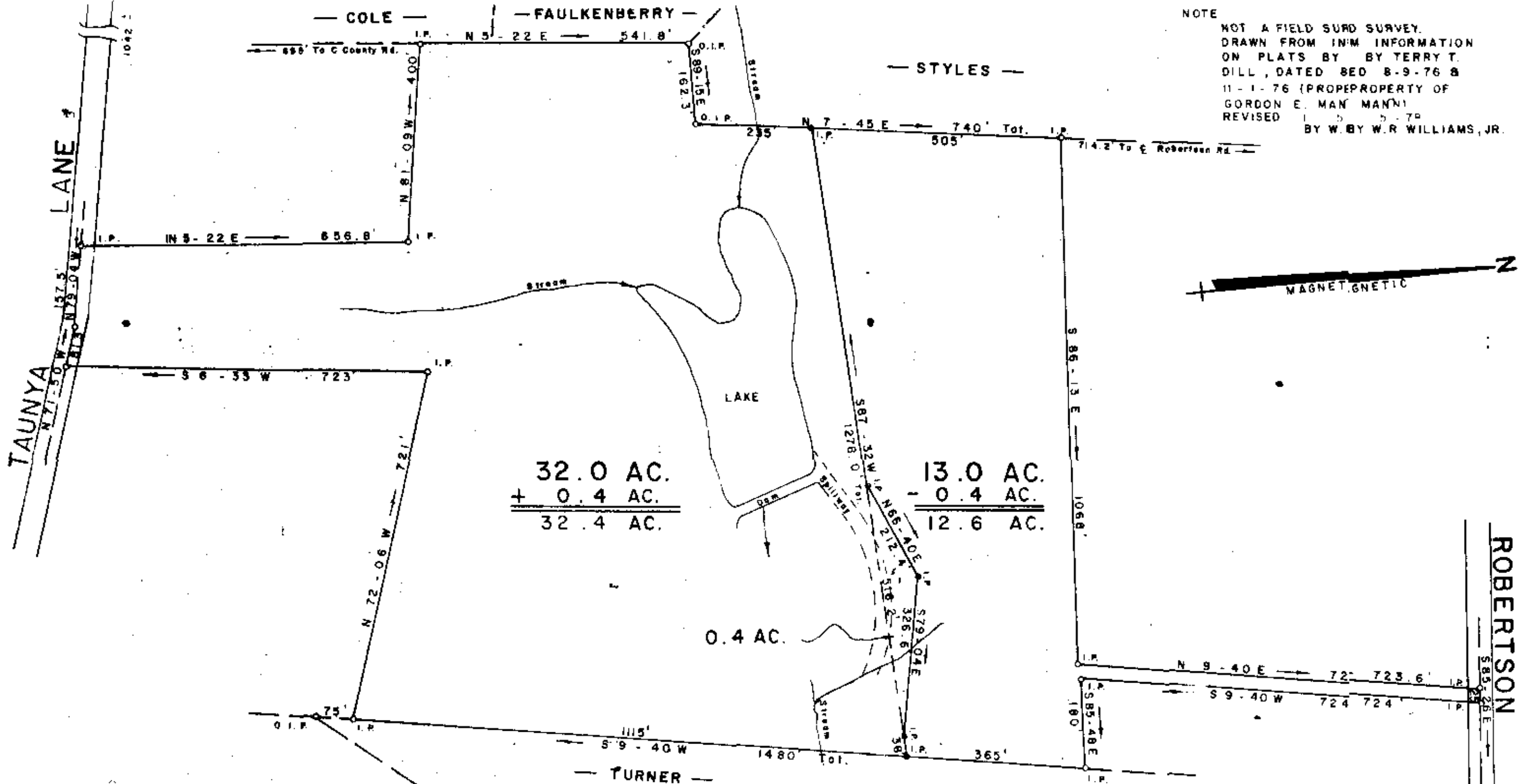
STATE

PARK

ROAD

TO TRAVELERS REST

THIS PLAT IS NOT A SUBDIVISION
A DEED IN THE NAME OF THE
COUNTY'S PLANNING COMMISSION.
2/16/79 *F. James Forbes*
County Secretary or Director of
Planning
Greenville County Planning Commission



NOTE
NOT A FIELD SURV SURVEY.
DRAWN FROM INM INFORMATION
ON PLATS BY BY TERRY T.
DILL, DATED BED 8-9-76 &
11-1-76 (PROPEPROPERTY OF
GORDON E. MAN MANN)
REVISED 1 5 5-79
BY W. BY W.R. WILLIAMS, JR.

32.0 AC.
+ 0.4 AC.

32.4 AC.

13.0 AC.
- 0.4 AC.

12.6 AC.

0.4 AC.

24863

PROPERTY

OF

GORDON E. MANN
TRAVELERS REST GREENVILLE CO.

SOUTH CAROLINA
JANUARY 29, 1977

W.R. Williams, Jr.
W.R. WILLIAMS, JR. ENGR. SURVEYOR # 3979
15 SOUTH MAIN STREET
TRAVELERS REST, S.C.

W.A. 8

GCTO 3 FE 28 79 933 933
500 2-1-PT 7 SCALE 2.000