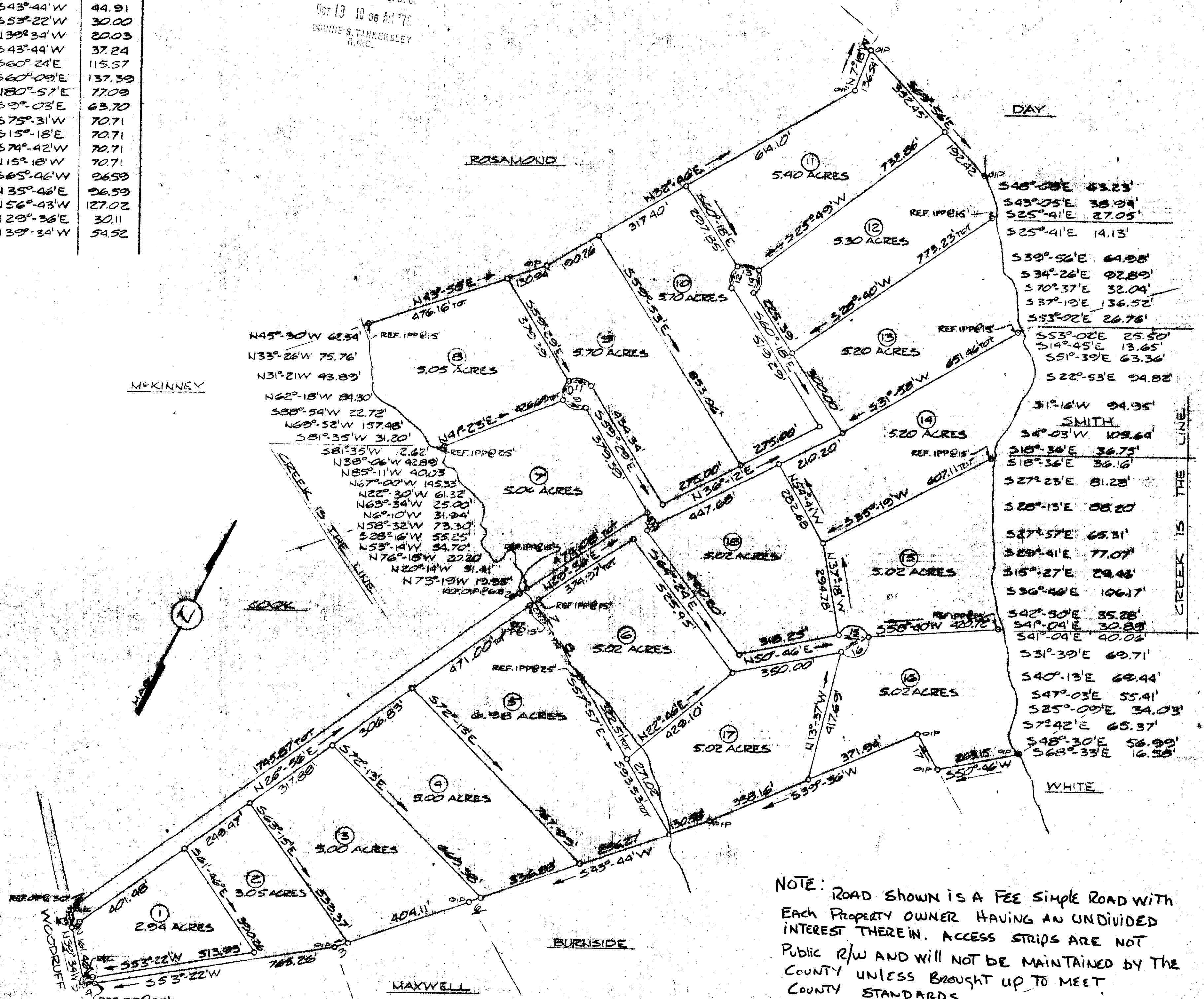


LOT	SIDE	BEARING	DIST.
1	1	S53°-22'W	30.00
2	2	N28°-56'E	30.00
2	3	S43°-44'W	44.91
2	4	S53°-22'W	30.00
2	5	N39°-34'W	20.03
3	6	S43°-44'W	37.24
5	7	S60°-24'E	115.57
5	8	S60°-09'E	137.39
7	9	N80°-57'E	77.09
8	10	S9°-03'E	63.70
9	11	S75°-31'W	70.71
10	12	S15°-18'E	70.71
11	13	S74°-42'W	70.71
12	14	N15°-18'W	70.71
15	15	S65°-46'W	96.59
16	16	N35°-46'E	96.59
16	17	N56°-43'W	127.02
18	18	N29°-36'E	30.11
RD.	19	N39°-34'W	54.52

FILED
GREENVILLE CO. S. C.
OCT 13 10 08 AM '78
DONNIE S. TANKERSLEY
R.M.C.



DAY

540°-08'E 63.23'
543°-05'E 38.98'
525°-41'E 27.05'
525°-41'E 14.13'
539°-56'E 64.98'
534°-26'E 92.89'
570°-37'E 32.04'
537°-19'E 136.52'
553°-02'E 26.76'
553°-02'E 25.50'
514°-45'E 13.65'
551°-39'E 63.36'
522°-53'E 94.82'
51°-16'W 94.95'
SMITH
54°-03'W 109.64'
518°-36'E 36.75'
518°-36'E 36.16'
527°-23'E 81.28'
528°-13'E 88.20'
527°-57'E 65.31'
529°-41'E 77.07'
515°-27'E 29.46'
530°-46'E 106.17'
542°-50'E 55.28'
541°-04'E 30.89'
541°-04'E 40.06'
531°-39'E 69.71'
540°-13'E 69.44'
547°-03'E 55.41'
525°-09'E 34.03'
57°-42'E 65.37'
548°-30'E 56.99'
568°-33'E 16.58'

CREEK IS THE LINE

WHITE

NOTE: ROAD SHOWN IS A FEE SIMPLE ROAD WITH EACH PROPERTY OWNER HAVING AN UNDIVIDED INTEREST THEREIN. ACCESS STRIPS ARE NOT PUBLIC R/W AND WILL NOT BE MAINTAINED BY THE COUNTY UNLESS BROUGHT UP TO MEET COUNTY STANDARDS.

THIS PLAT IS NOT A SUBDIVISION AS DEFINED BY THE GREENVILLE COUNTY SUBDIVISION REGULATIONS.
10/13/1978 Anthony B. Puelli
Chairman, Secretary, or Director of Planning
Greenville County Planning Commission



STATE OF SOUTH CAROLINA,
GREENVILLE COUNTY

OAK MEADOWS
PROPERTY OF
JACK BURGESS, JR. &
DAVID MARTIN et al

FREELAND & ASSOCIATES
ENGINEERS
LAND SURVEYORS
GREENVILLE, S.C.

SURVEY DG
DRAWN DC
CHECK
SCALE 1" = 200'
DATE 29 AUG. 1978
DWG. NO. 73-2300

16V-11
OCT 13 1978

11781

BLOCK BOOK NO. 550.3-1-21

IRON PINS AT ALL CORNERS EXCEPT WHERE NOTED.