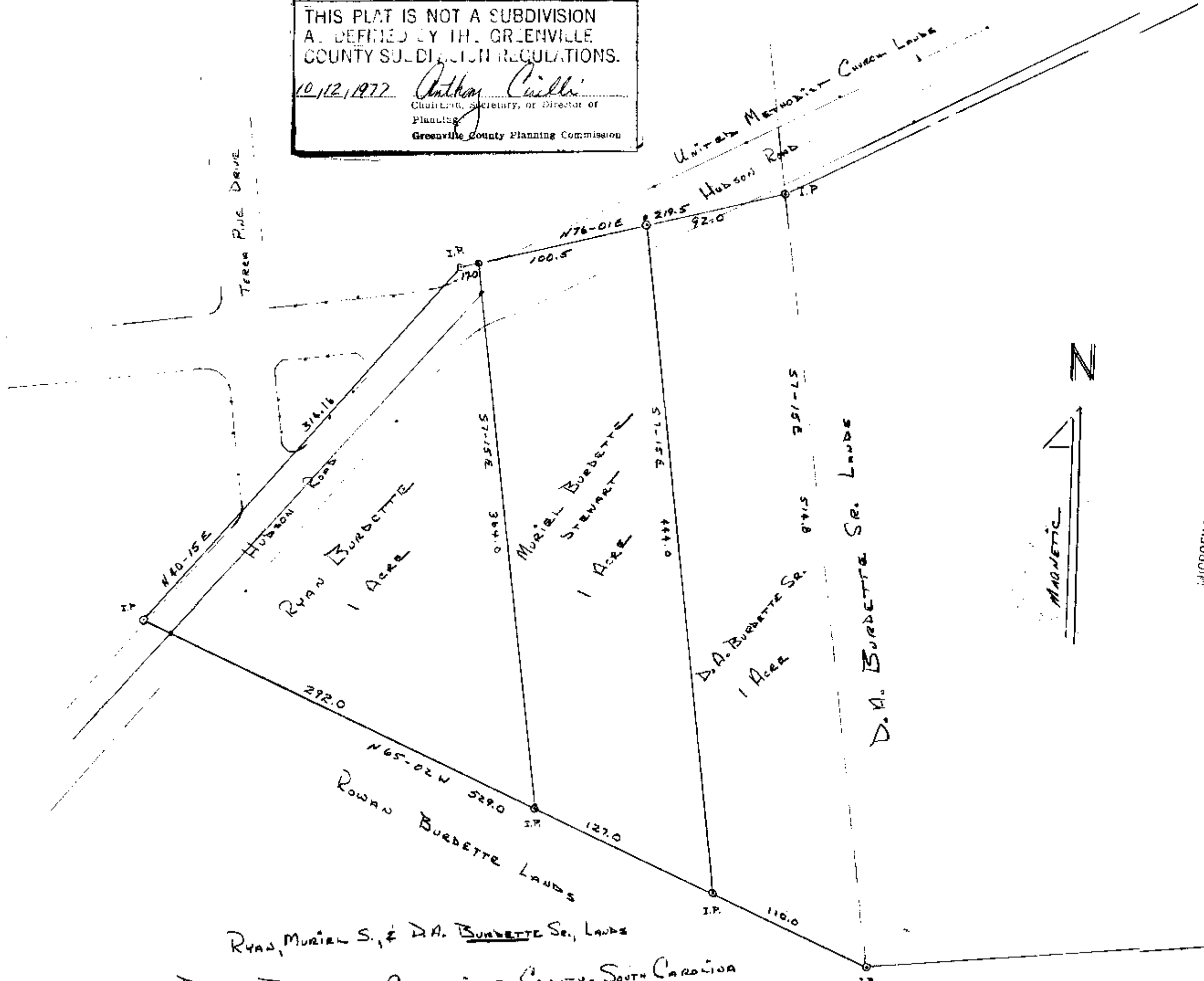


THIS PLAT IS NOT A SUBDIVISION  
 AS DEFINED BY THE GREENVILLE  
 COUNTY SUBDIVISION REGULATIONS.  
 10/12/1977 *Anthony Cuilli*  
 Chairman, Secretary, or Director of  
 Planning  
 Greenville County Planning Commission

200 11608 18



MICROFILMED

MICROFILMED



RYAN, MURIEL S., & D.A. BURDETTE SR., LANDS

BUTLER TOWNSHIP - GREENVILLE COUNTY - SOUTH CAROLINA  
 SCHOOL DISTRICT 7C - SHOWN ON TAX ROLL SHEET 540.2, BLOCK 1  
 LOTS 9.1, 9.2, 9.3. SURVEYED AUGUST 6, 1974  
 PLAT BOOK 00, PAGE 404 SCALE 1"=60'

11608

✓ 6-E-100  
 11612 1 100  
 OCT 12 3 39 PM '77

GREENVILLE CO. S. C.  
 DONNIE S. TANKERSLEY  
 R.M.C.



FILED