

6C-15

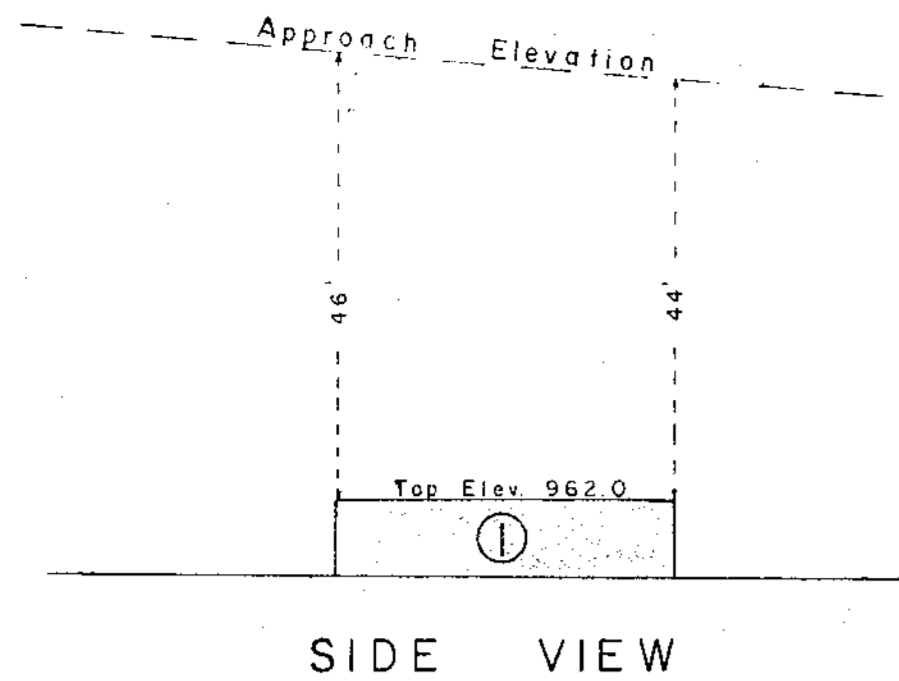
FILED
GREENVILLE, S.C.
MAY 13 4 31 PM '77
DONNIE S. TANKERSLEY
R.M.C.

APPROACH LIMITS OF WEST RUNWAY GREENVILLE MUNICIPAL DOWNTOWN AIRPORT GREENVILLE, S. C.

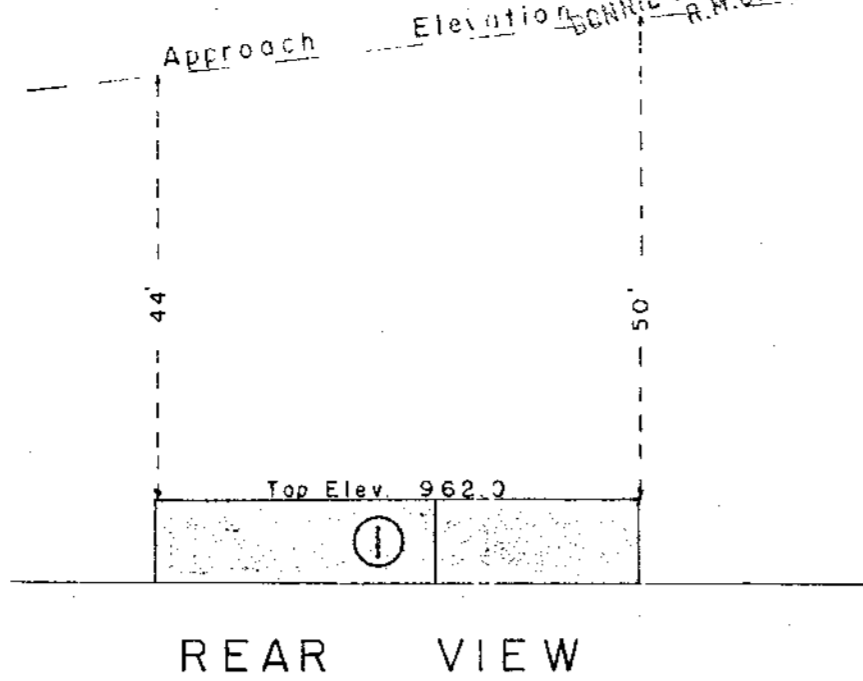
DALTON & NEVES CO., ENGINEERS
GREENVILLE, S. C.
March, 1977

6C-16

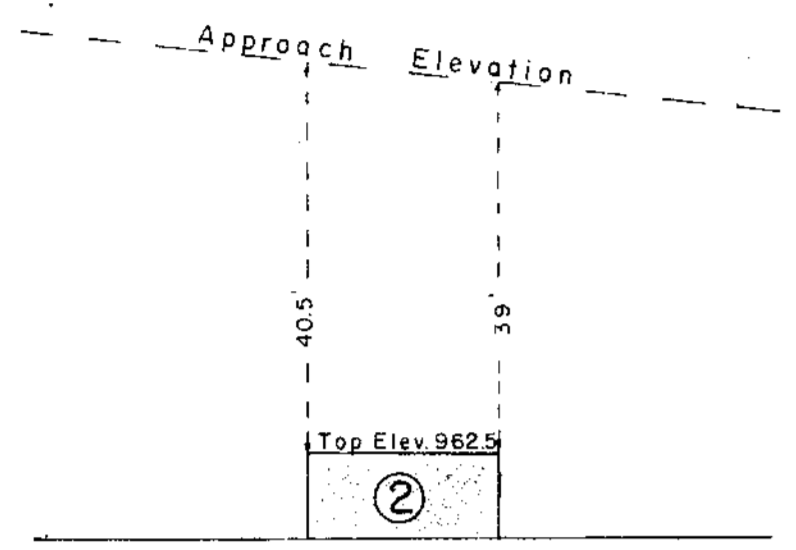
31577



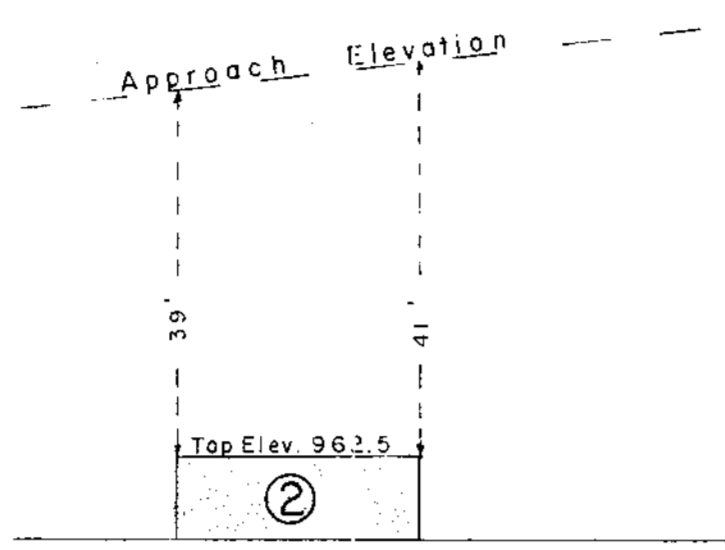
SIDE VIEW



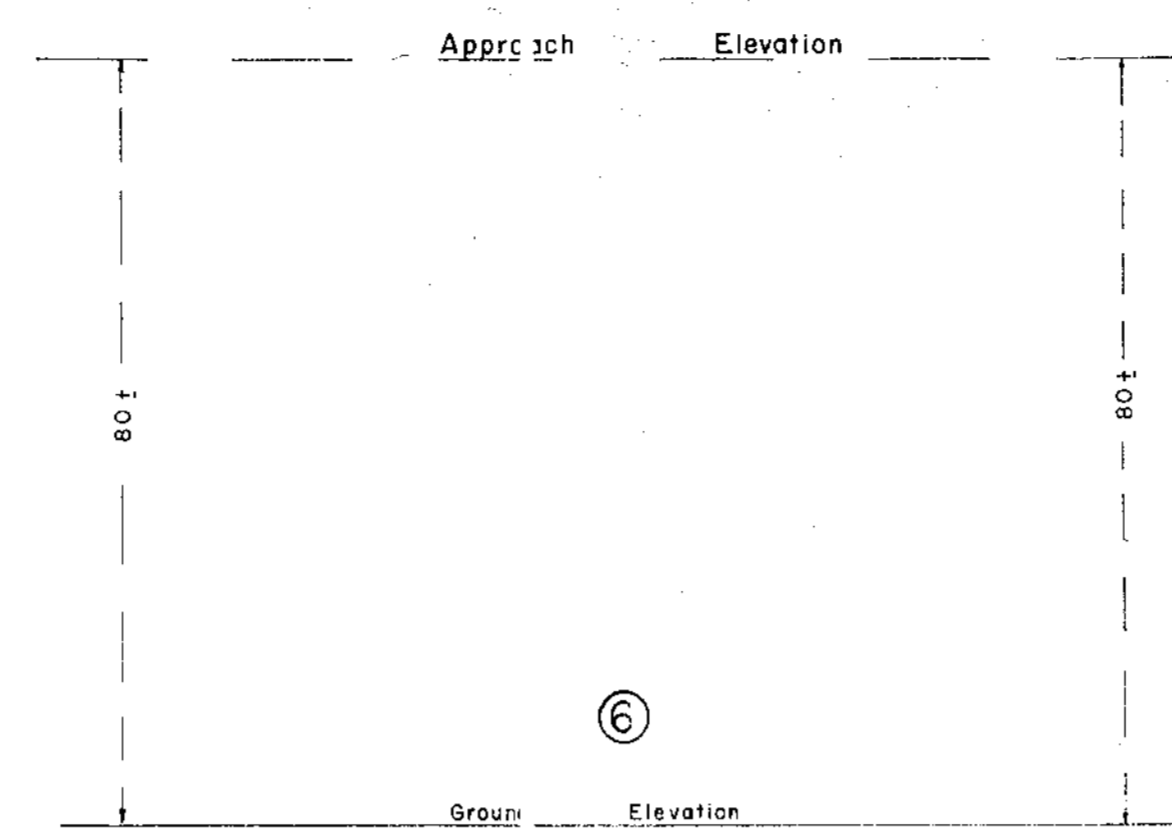
REAR VIEW



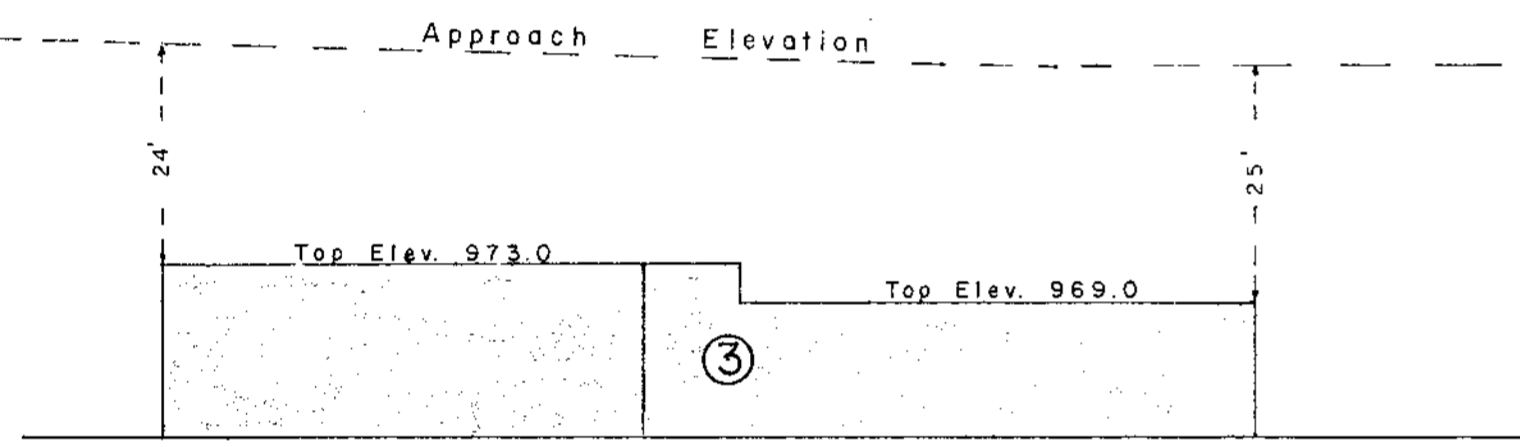
SIDE VIEW



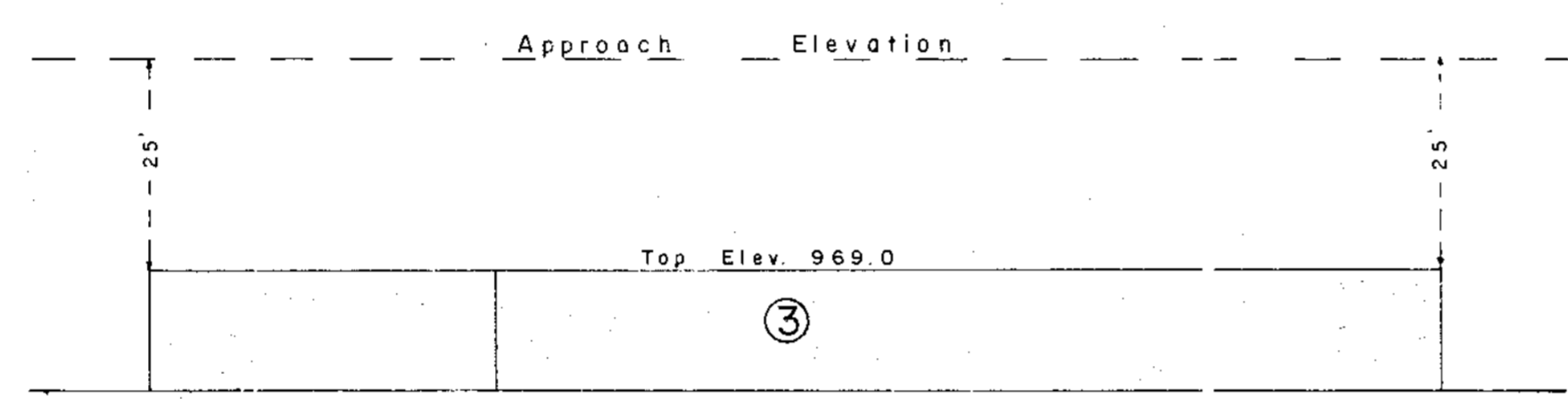
REAR VIEW



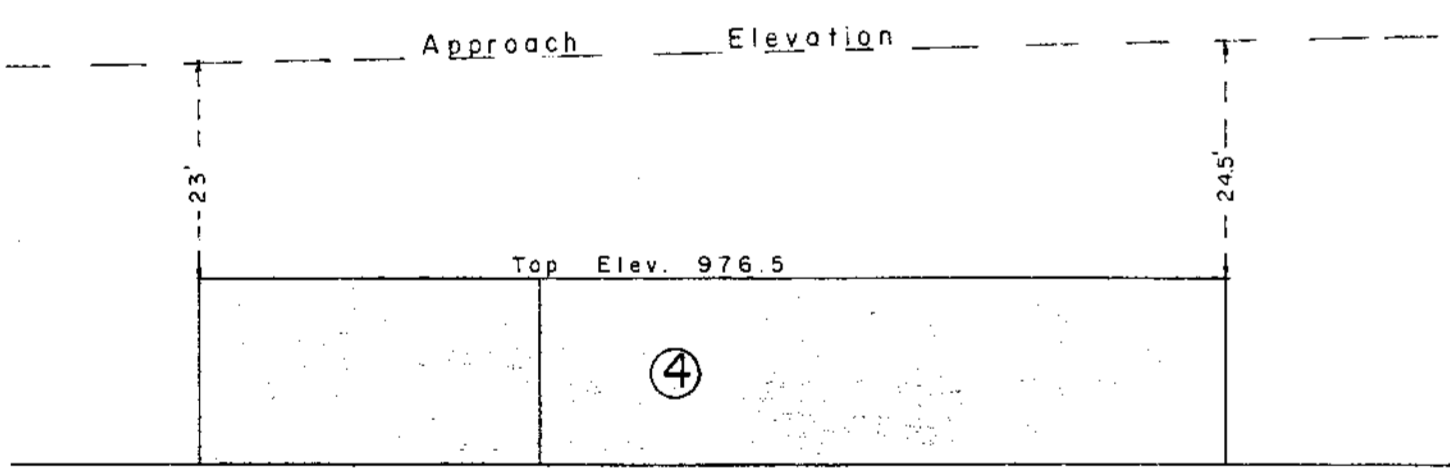
SIDE VIEW



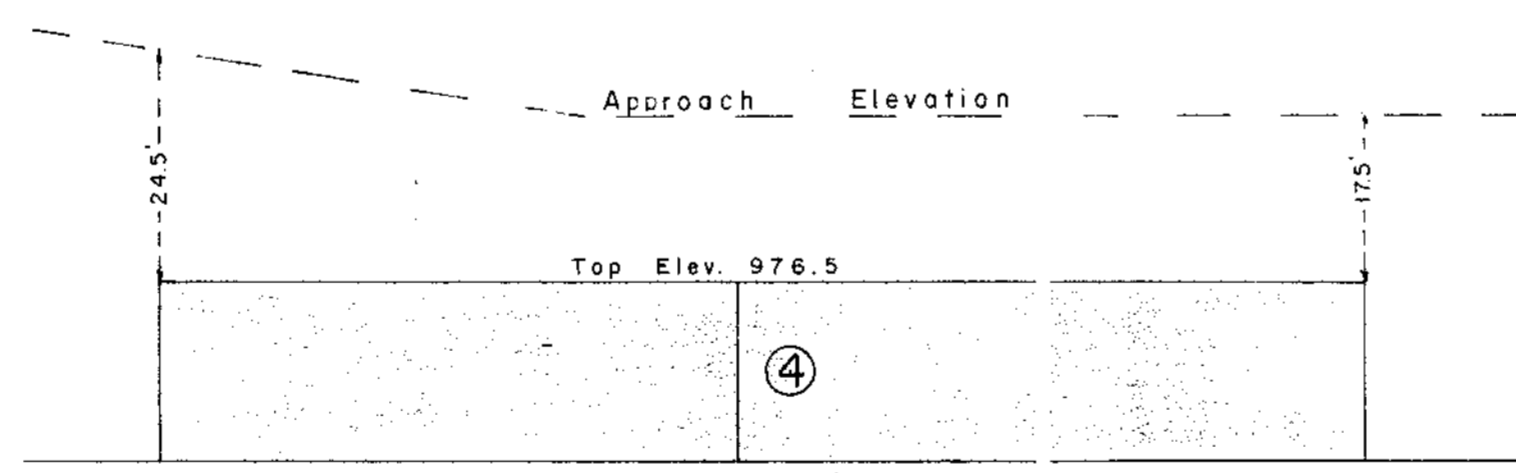
SIDE VIEW



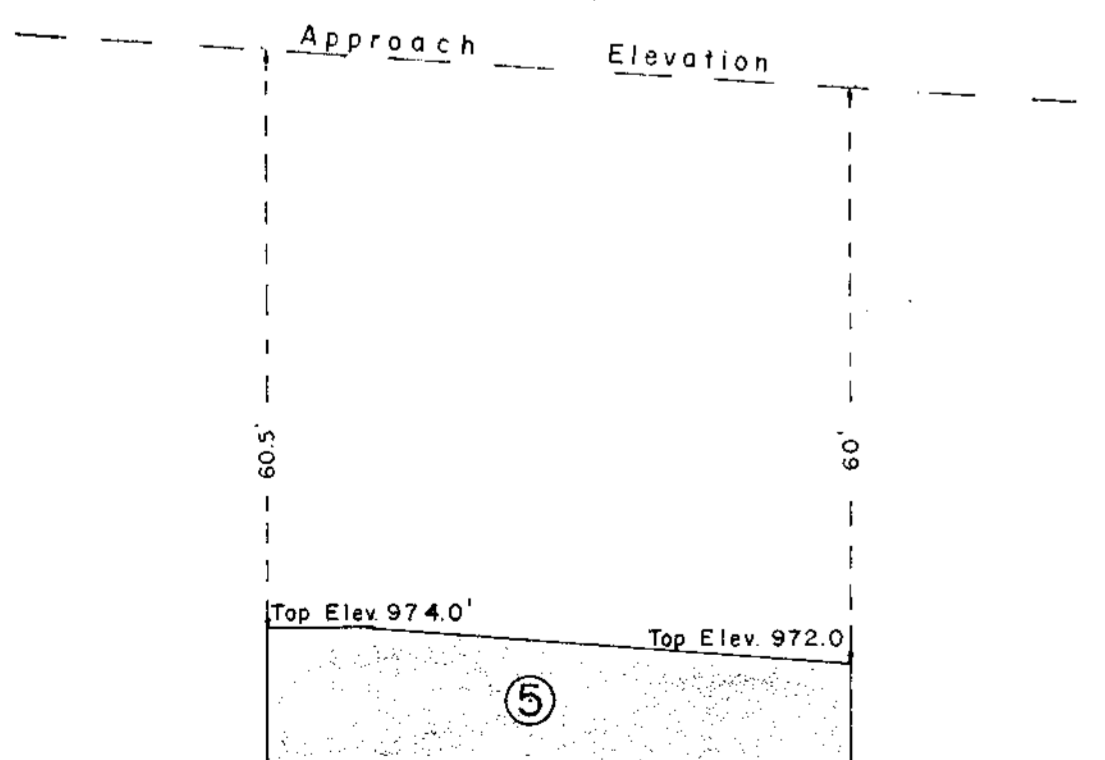
REAR VIEW



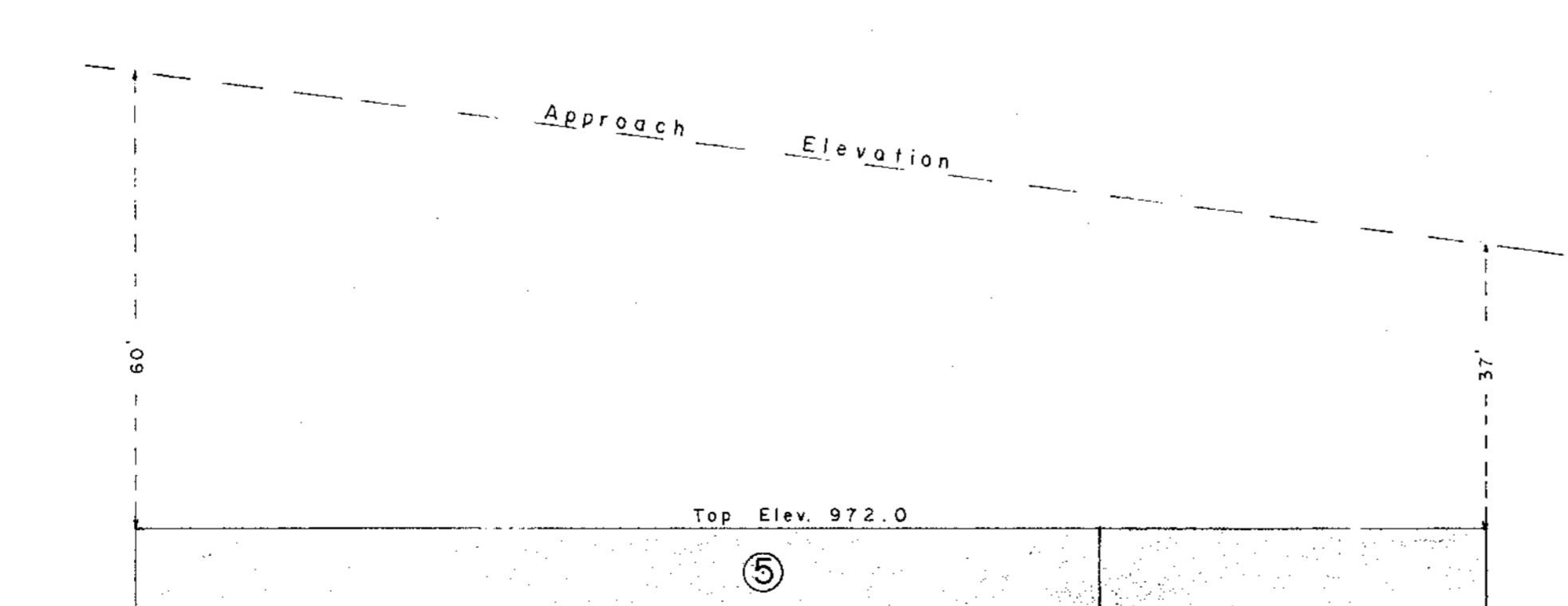
SIDE VIEW



REAR VIEW

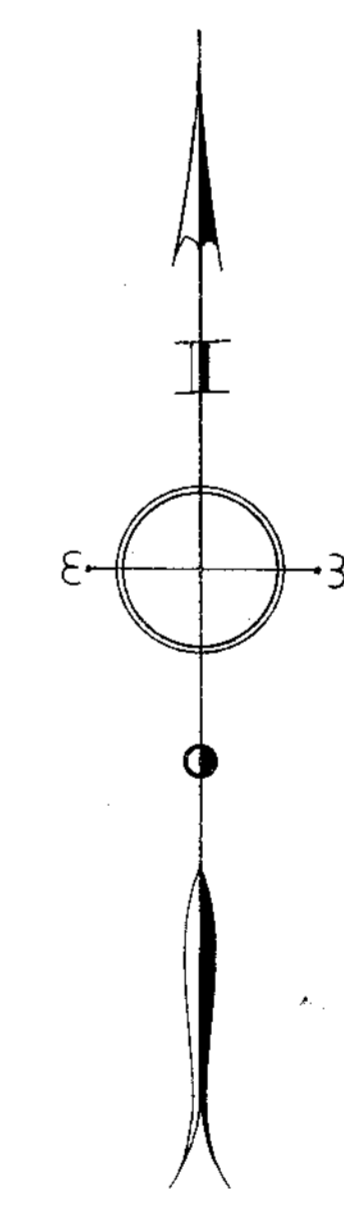
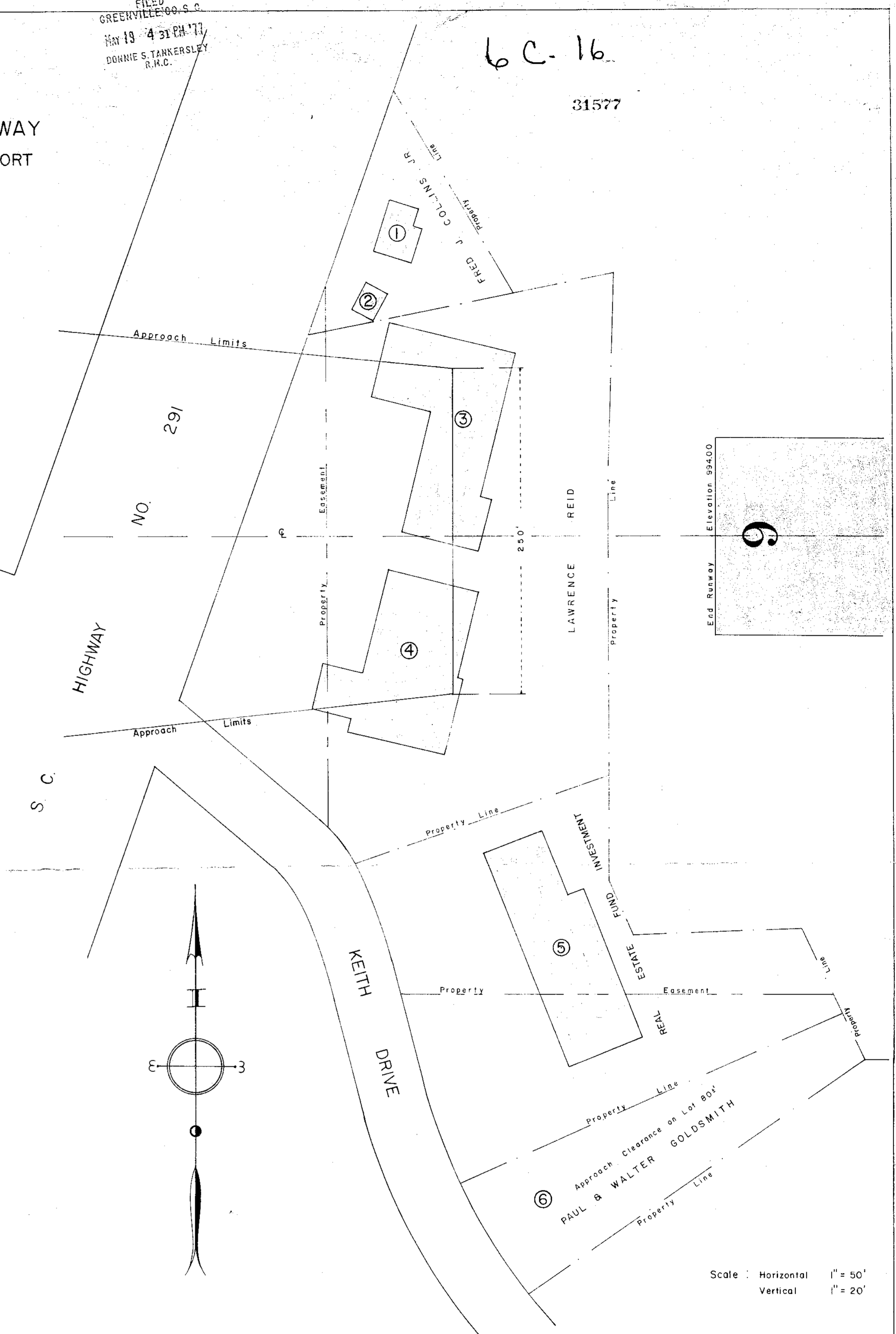


SIDE VIEW

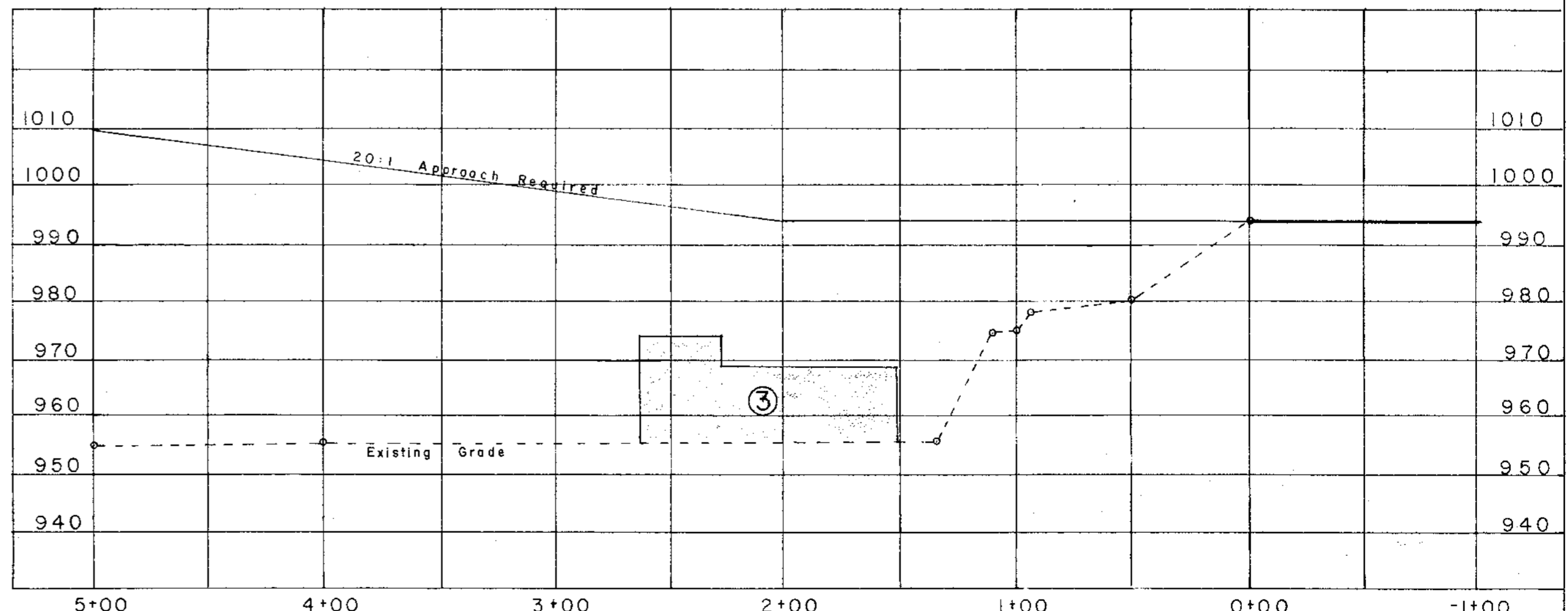


REAR VIEW

Scale 1" = 20'



Scale: Horizontal 1" = 50'
Vertical 1" = 20'



NOTE: Approach elevations determined by using a 20:1 approach slope intercepted by a 7:1 side transition slope.

MICROFILMED

862874 19 600 M6

MICROFILMED

F.B. 419
S.C. Reg. No. 6266