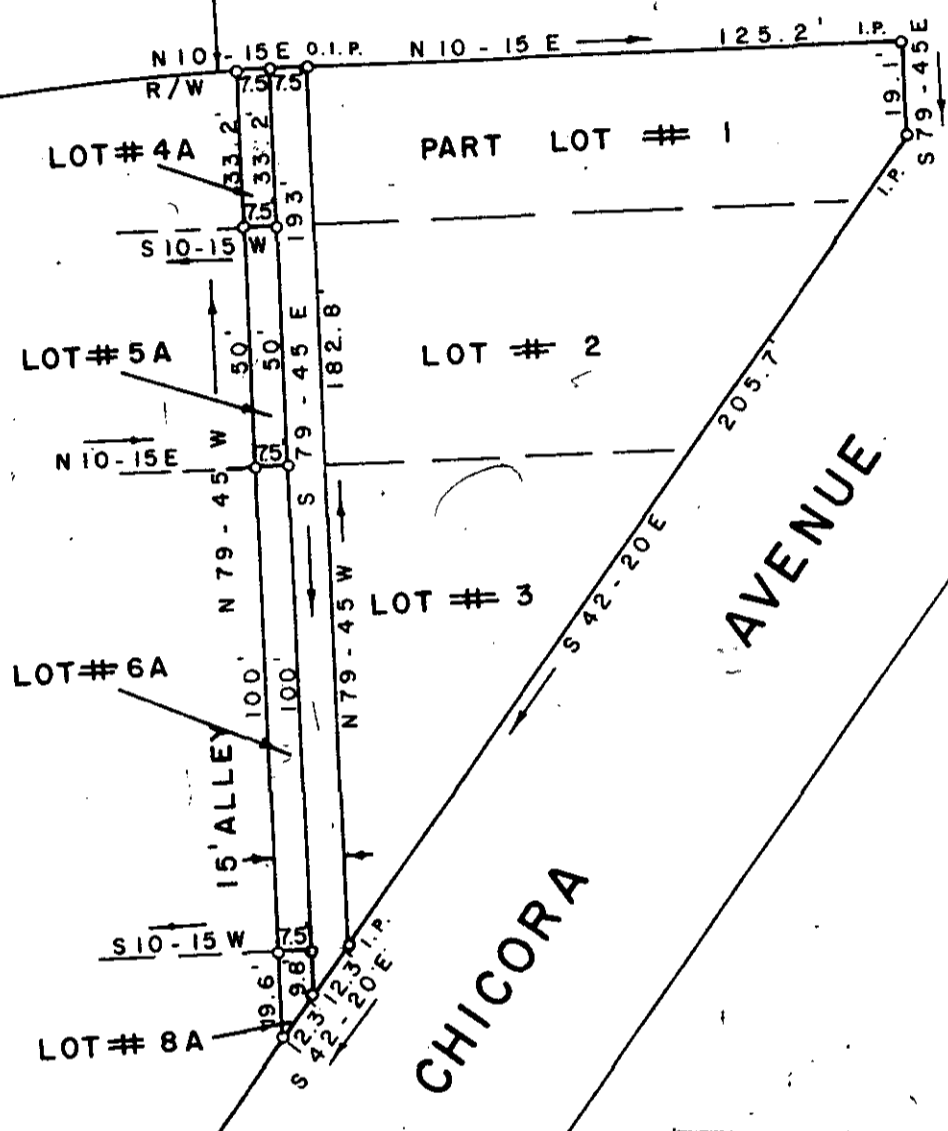


NOTE:
SEE PLAT BOOK "DDD"
PAGE 258



R/W
S C HIGHWAY # 253



GREENVILLE CO. FILED
FEB 17 11 01 AM '77
DONNIE S. TANKERSLEY
R.A.C.

THIS PLAT IS NOT A SUBDIVISION
AS DEFINED BY THE GREENVILLE
COUNTY SUBDIVISION REGULATIONS.
2/17/77 *Royce J. Carter*
Chairman, Secretary, or Director of
Planning.
Greenville County Planning Commission

PROPERTY OF
GORDON E. MANN
NEAR BEREA GREENVILLE CO.

SOUTH CAROLINA

SEPTEMBER 1, 1976

REVISED OCTOBER 21, 1976

FEB 17 1977

21794

✓ 54-50

MICROFILMED



W. R. WILLIAMS, JR. ENGR. / SURVEYOR # 3979

15 SOUTH MAIN STREET

TRAVELERS REST, S. C.

146-4-2

F. B. 19

SCALE 1" = 40'

6-5-52-PR-176

200 M