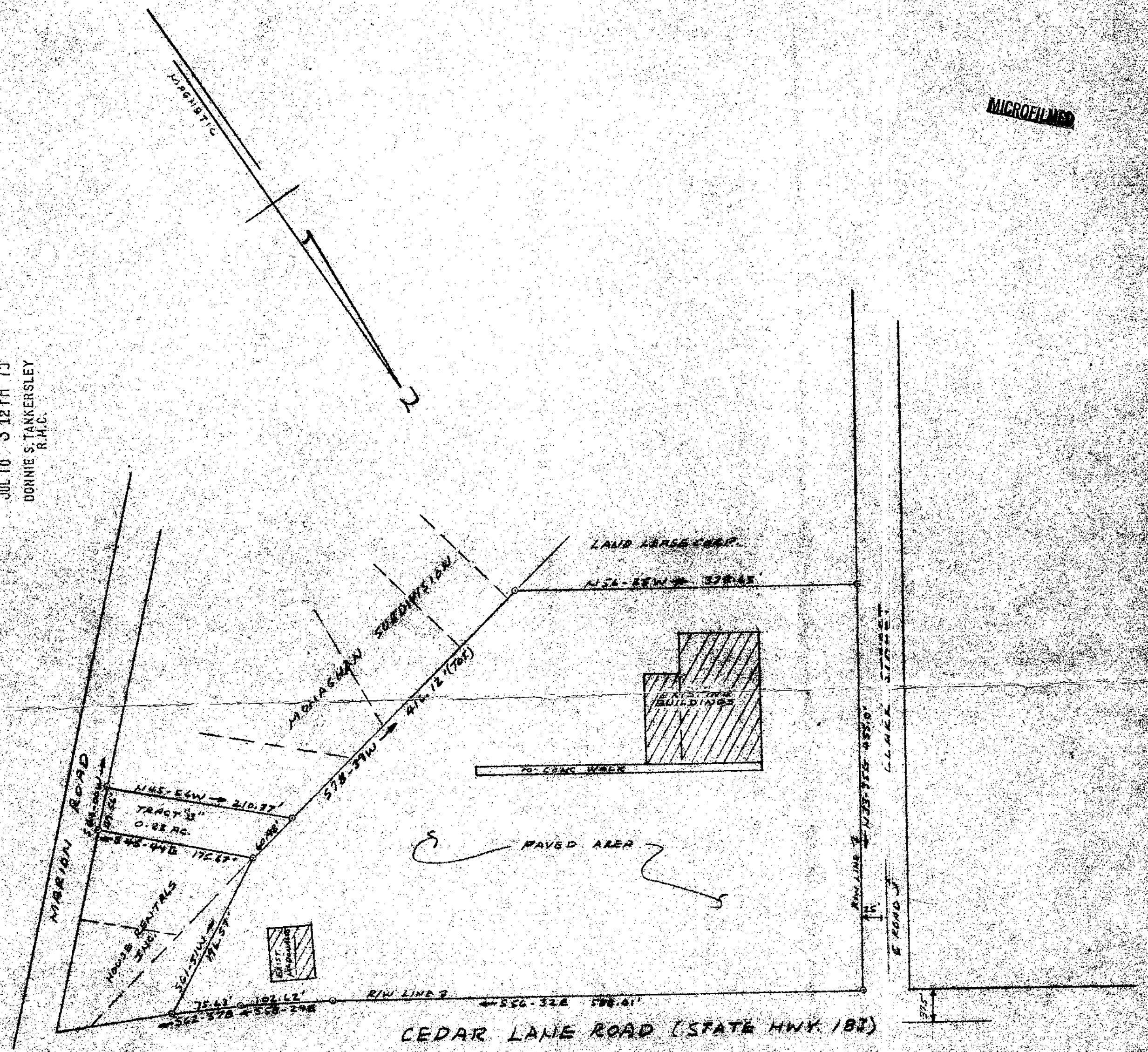


FILED
 GREENVILLE CO. S. C.
 JUL 18 3 12 PM '75
 DONNIE S. TANKERSLEY
 R.H.C.

MICROFILMED



PROPERTY OF
LAND LEASE CORP.
 NEAR GREENVILLE, S.C.
 JULY 3, 1975 SCALE 1"=40'

NOTES: THIS PLAN DRAWN FROM PARTS
 OF SURVEY AND NOTES, DATED
 1974, AND PARTIAL PROPERTY OF
 LAND LEASE CORP. AND A PART BY
 AVERY HUGH ASSOCIATES DATED APRIL
 22, 1975. EXCEPT WHERE SHOWN OTHERWISE

5L-61
 12

RECORDED
 JUL 18 1975
 100

JUL 18 1975

RECORDING FEE
 PAID \$ 2.00