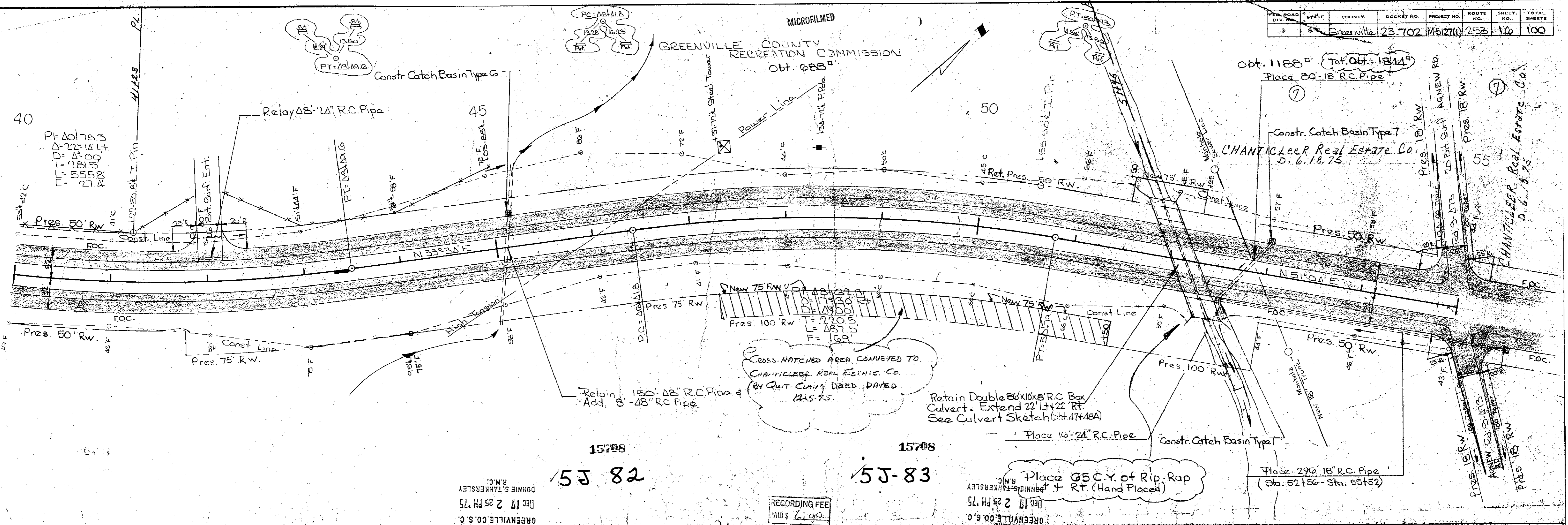


FED. ROAD DIV. NO.	STATE	COUNTY	DOCKET NO.	PROJECT NO.	ROUTE NO.	SHEET NO.	TOTAL SHEETS
3	S	Greenville	23.702	M51274	253	160	100

MICROFILMED

MICROFILMED



40  
 $PI = 40175.3$   
 $\Delta = 22^\circ 14' 44''$   
 $DI = 281.5$   
 $EI = 5558.2$   
 $E = 27.4$

New 75' R.W.  
 $PI = 42120.0$   
 $\Delta = 43^\circ 20' 12''$   
 $DI = 49.0$   
 $EI = 220.5$   
 $E = 169.5$

Obt. 1188'  $\square$  Tot. Obt. 1844'  
 Place 80'-18" R.C. Pipe

Cross-hatched area conveyed to  
 CHANTICLEER REAL ESTATE CO.  
 BY QUIT-CLAIM DEED DATED  
 12.15.75.

Retain Double 66x10x8' R.C. Box  
 Culvert. Extend 22' Lt + 22' Rt.  
 See Culvert Sketch (Sht. 47+48A)

Place 65 C.Y. of Rip-Rap  
 + Rt. (Hand Placed)

Place 290'-18" R.C. Pipe  
 (Sta. 52+56 - Sta. 55+52)

15708  
 5J 82

15708  
 5J-83

GREENVILLE CO. S.C.  
 DEC 17 2 25 PM '75  
 DONNIE S. TANKERSLEY  
 R.M.C.

RECORDING FEE  
 AID \$ 6.00

GREENVILLE CO. S.C.  
 DEC 17 2 25 PM '75  
 DONNIE S. TANKERSLEY  
 R.M.C.

B.M. N.C. Nail in base of Sign Post  
 55' Lt. Sta. 41+45 EI-977.77

CHANTICLEER Real Estate Co.  
 D. 6. 18. 75

CHANTICLEER Real Estate Co.  
 D. 6. 18. 75

GREENVILLE COUNTY  
 RECREATION COMMISSION  
 Obt. 688'

Constr. Catch Basin Type G

Constr. Catch Basin Type 7

Constr. Catch Basin Type 7

Relay 48'-24" R.C. Pipe

Place 16'-24" R.C. Pipe

Place 290'-18" R.C. Pipe

Pres. 50' R.W.

Pres. 75' R.W.

Pres. 100' R.W.

Pres. 50' R.W.

Pres. 18' R.W.

Pres. 18' R.W.

Pres. 18' R.W.

Pres. 18' R.W.

Pres. 18' R.W.

Pres. 18' R.W.

Pres. 18' R.W.

Pres. 18' R.W.

Pres. 18' R.W.