

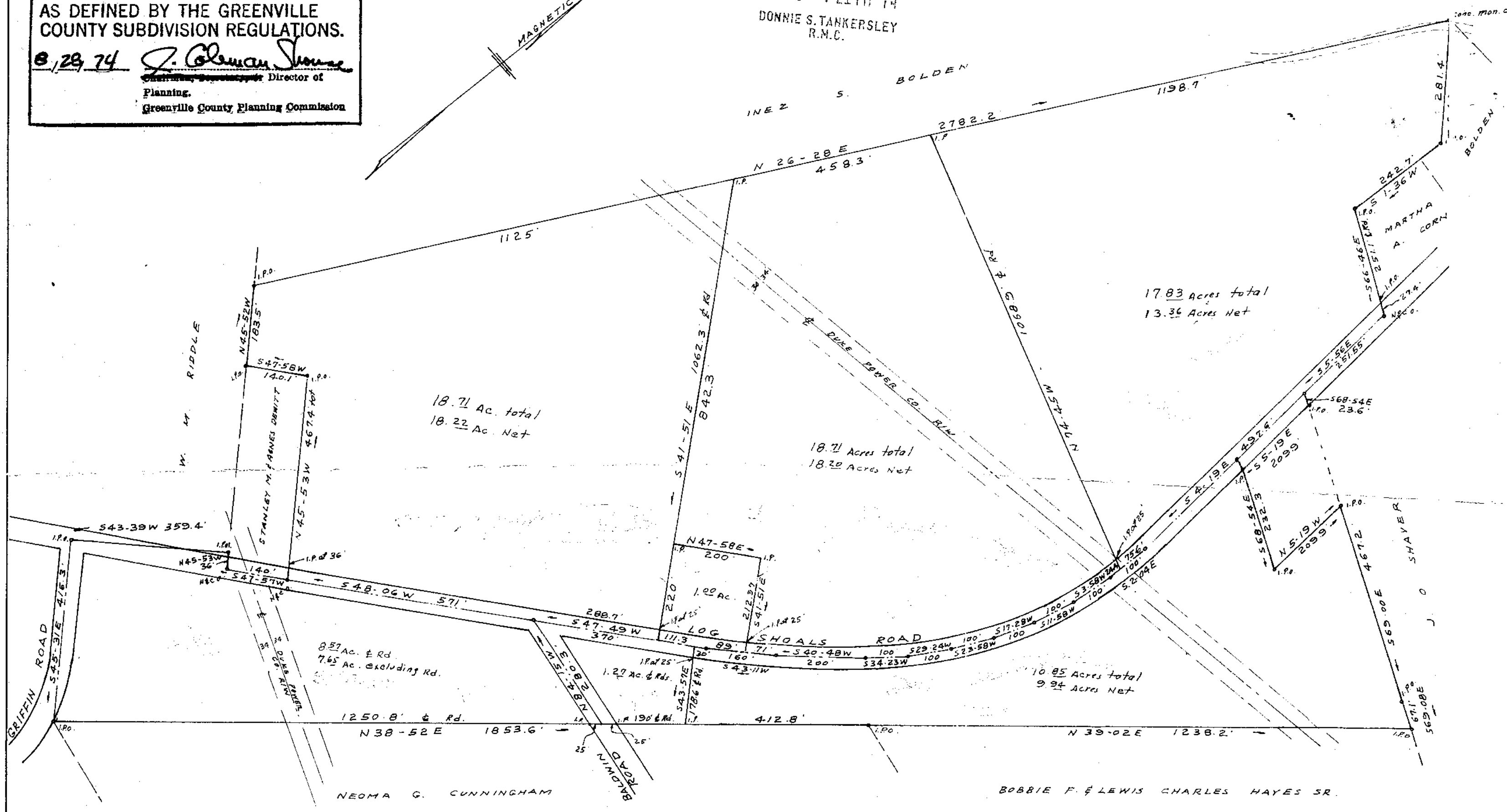
THIS PLAT IS NOT A SUBDIVISION
AS DEFINED BY THE GREENVILLE
COUNTY SUBDIVISION REGULATIONS.

8/28/74

J. Clemon Shaver

Chairman, Director of
Planning,
Greenville County Planning Commission

FILED
GREENVILLE CO. S. C.
AUG 28 4 21 PM '74
DONNIE S. TANKERSLEY
R.M.C.



NOTE: DIVIDED AND PLAT REVISED 3/15/74

✓ 5H-27

AUG 28 1974

PROPERTY OF
NANNIE MARLER ABERCROMBIE EST

NEAR MAULDIN

SCALE 1" = 200'



C. O. RIDDLE - REG L.S. 1347 - Greenville, S.C.

MICROFILMED

5784

F.B. B. 74