

#15855 Filed This 8th day of Jan 1971
 And Recorded in Vol. 44 Page 183 at 1:52 P.M.
 Ollie Farnsworth
 Register Meane Conveyance Greenville County, S. C.

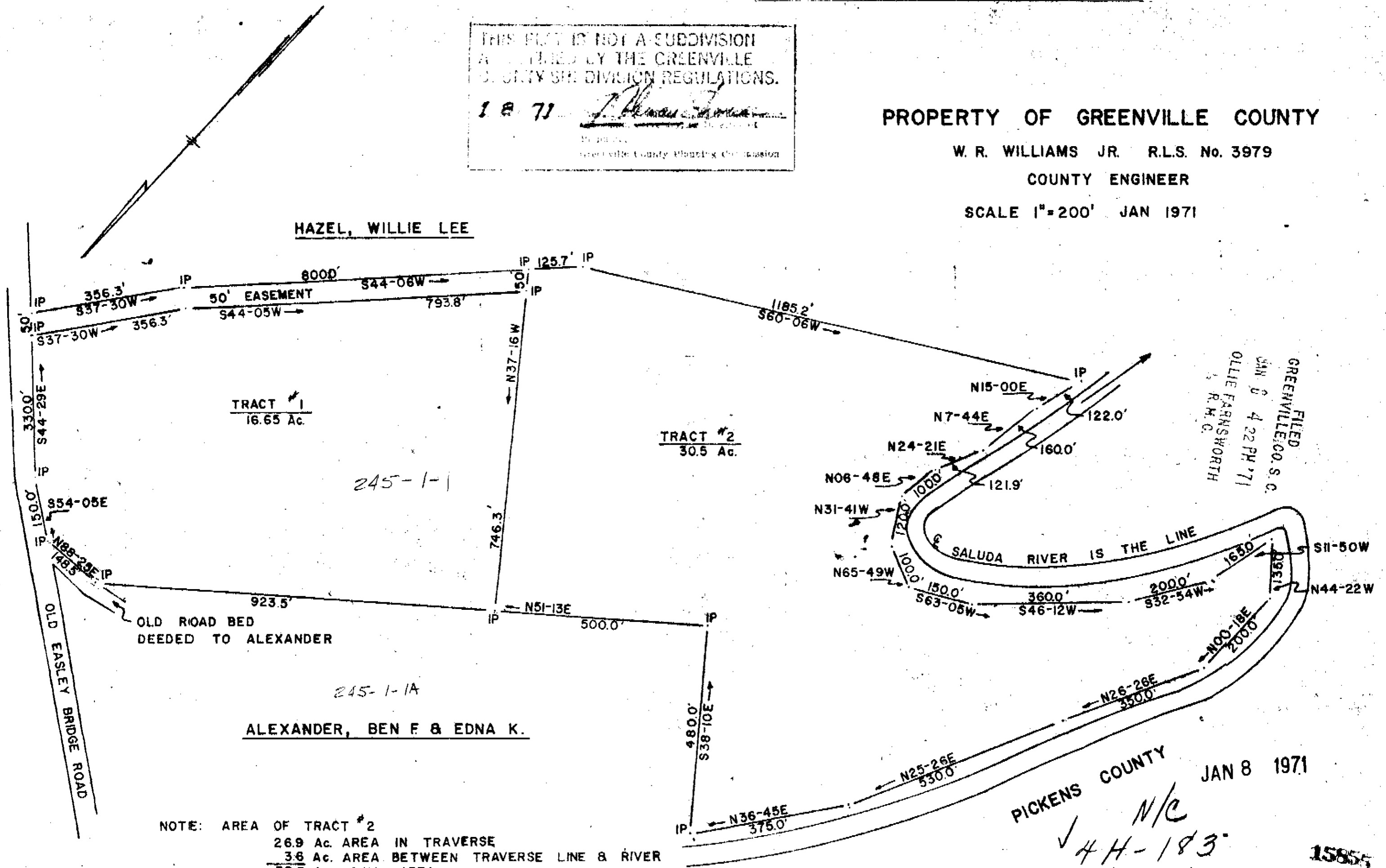
THIS PLAT IS NOT A SUBDIVISION
 AS DEFINED BY THE GREENVILLE
 COUNTY SUBDIVISION REGULATIONS.
 1871
 Greenville County Planning Commission

PROPERTY OF GREENVILLE COUNTY

W. R. WILLIAMS JR. R.L.S. No. 3979

COUNTY ENGINEER

SCALE 1"=200' JAN 1971



FILED
 GREENVILLE CO. S. C.
 JAN 8 4 22 PM '71
 OLLIE FARNSWORTH
 R.M.C.

PICKENS COUNTY
 N/C
 ✓ 44-183
 JAN 8 1971

HOLMESVIEW

15855
 JAN 8 1971