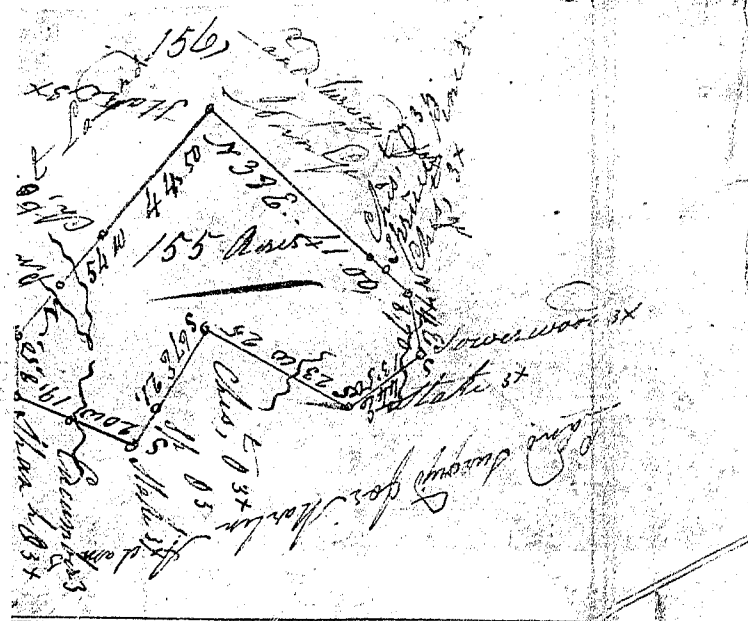


20 Cyber



South
 Greenville
 John C. Look
 have a
 Wood a tra
 ation in
 Wolf Cre
 All by pr
 East by
 by John
 and
 Survey
 This
 Recor
 Look's
 name

Pursuant to a warrant from
 of Locations in the District
 of Georgia, I have measured and laid out
 into sixty nine acres, situate
 in said District, on the
 waters of Enoree River. Bounded
 north by Meadow Land, south by
 Meadow Land, east by
 Meadow Land, and north such form
 and bearings as the above Plat represents
 Done the 20th day of Nov 1832
 by John C. Look
 Surveyor

John C. Look
 of Georgia
 into 155
 of the Enoree
 River
 and the
 other
 form
 Survey
 River

Pursuant to a warrant from
 of Georgia, I have measured and laid out
 into 155 acres, situate
 in said District, on the
 waters of the Enoree River, bounded
 north by Meadow Land, south by
 Meadow Land, east by
 Meadow Land, and north such form
 and bearings as the above Plat represents
 Done the 19th day of Nov 1832
 by John C. Look
 Surveyor