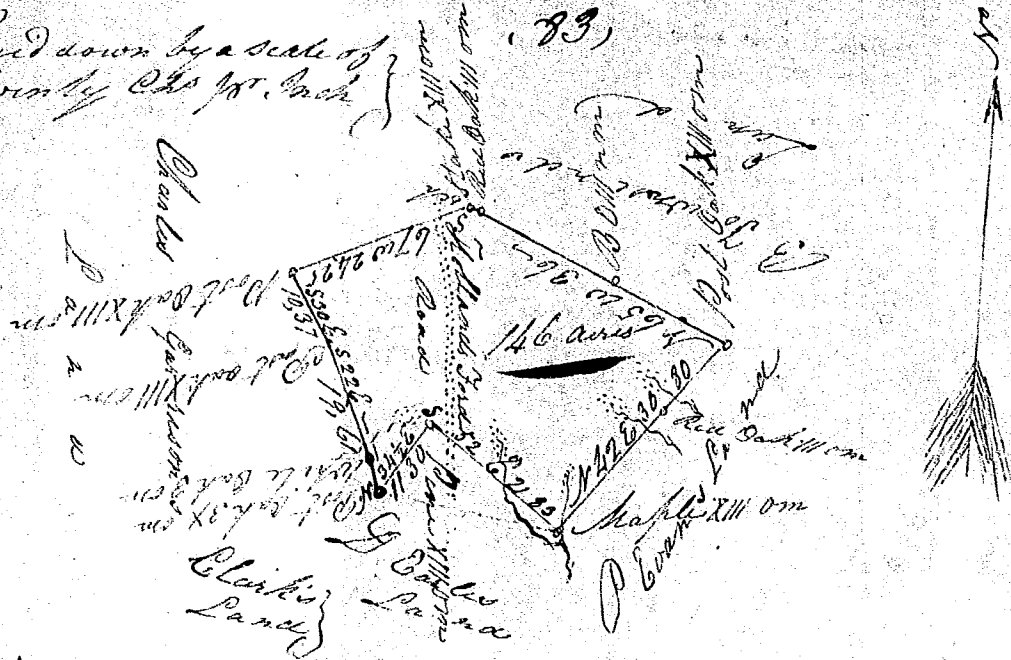


Laid down by a scale of  
Twenty Chs per Inch

(83)



## South Carolina

Pursuant to a warrant  
from John Young Commr of Locations in the  
District of Greenville dated the 22nd day of  
March 1824. I have admeasured and laid  
out unto Benjamin Townsend a tract of  
land containing 146 Acres, situate in the  
said District, on the waters of the Golden  
Grove of Saluda River. Bounded by a line  
running N<sup>W</sup> & S<sup>E</sup> by Charles Garrison's Land, N<sup>W</sup> & S<sup>E</sup>  
D. Evans Land, and N<sup>E</sup> by P. Evans Land, and  
have such form and marks as the above  
plat represents

Surveyed the 27th day of March 1824  
By J. H. Laborn D.  
Recorded 27th day of March 1824 by  
John Young, C. L.