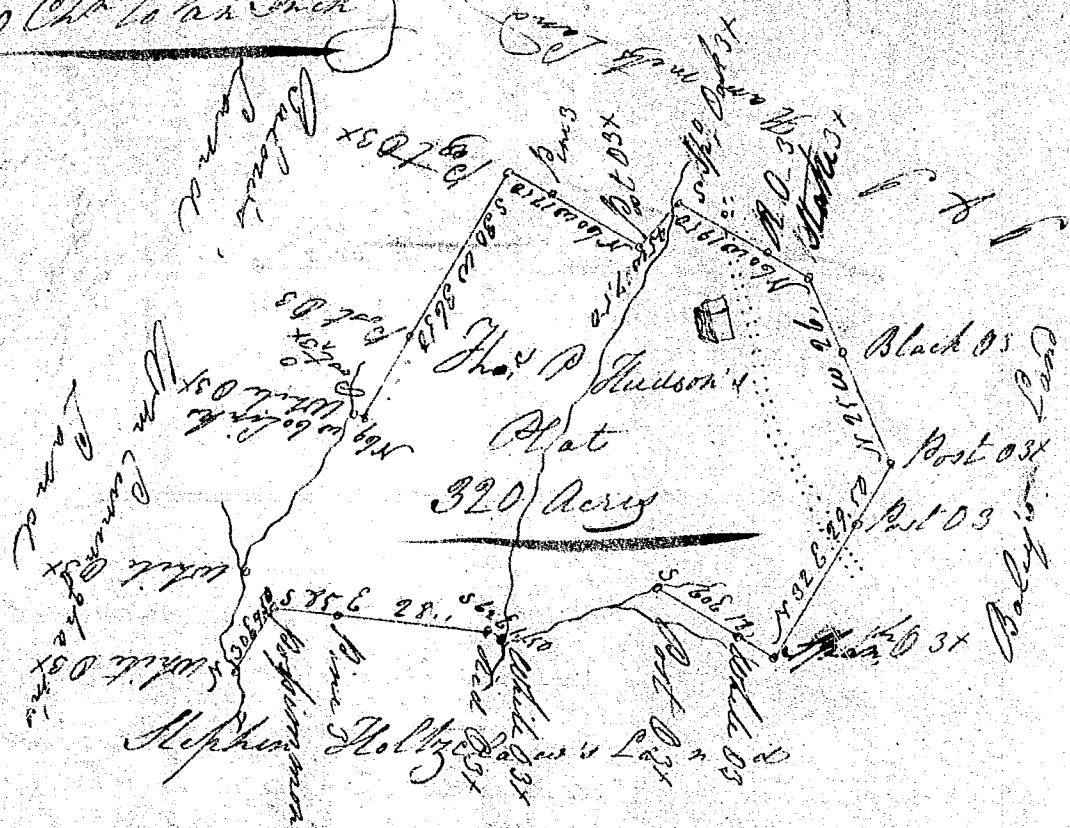


Paid down by a scale of 76
 20 Cts to an inch



State of South Carolina,

Pursuant to a warrant from John Young Esqr Commissioner of Locutions for Greenville District, dated the 14th day of April 1823 I have admeasured and laid out unto Thomas De Hudson a tract of Land containing three hundred and twenty acres, situate in said District, on the branches of Prince's Creek, waters of Enoree River, bounded by Lands of Stephen Holby below - Hugh Bailey and others, and hath such form & Marks as the above Plat Represents
 Witness the 30th day of May 1823.
 Stephen C Lister Esqr

Felix Green & Arch Holby below

Recorded the 10th day of May 1823 by
 John Young Esqr
 Laid to Self