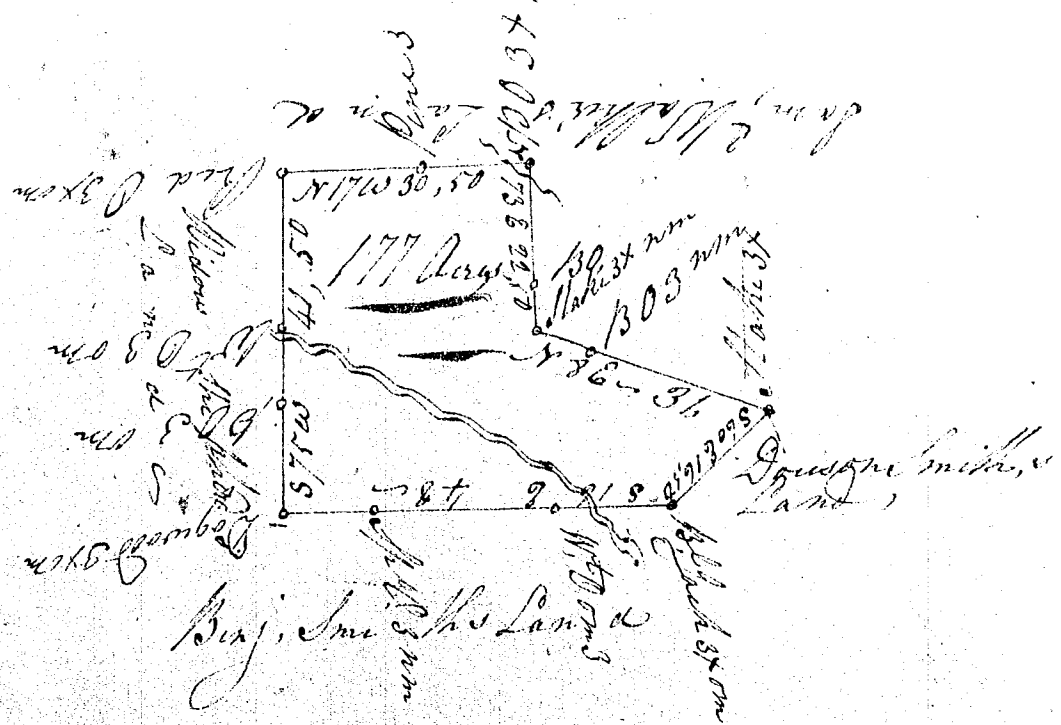


(154)



South Carolina

Pursuant to a warrant from John Young Esqr Comm, of Locations, for the District of Greenville being dated the 10th day of August 1818; I have caused to be admeasured and laid out unto Benjamin Smith a tract of 177 Acres of Land on both sides of Little Rock Creek waters of Enore River, bounded by the Wagon Wheel line running SW, by Sabul Walker's line running NE, & NE, Smith's line SE; and has such form and marks bearings and boundings as the above Plat represents, Surveyed & Certified by me this 11th day of August 1818.

Benj Griffith D.S.

Recorded the 13th day of August 1818
 by John Young Comy Locat
 Delivered to Self