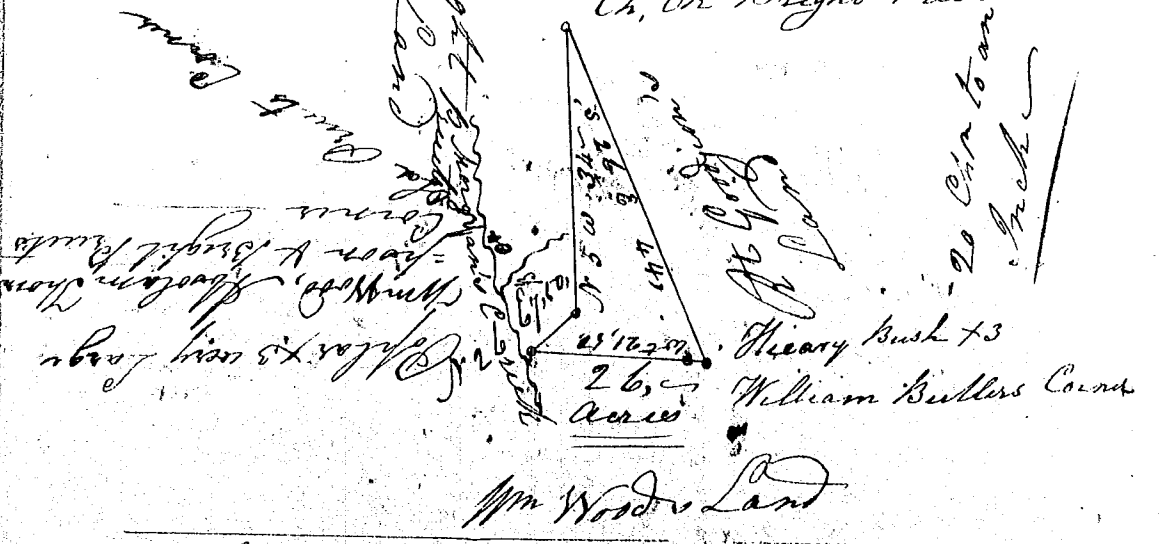


(141)

Ch. of Bright Prunts Corner



So Carolina

Pursuant to a warrant from John Young Esqr Commissioner of Locations in the District of Greenville Dated the 5th of May 1817, I have admeasured and laid out unto Isaaciah Kettle a tract of Land containing Twenty six acres, situate in said District on a Ridge adjoining to Morgan's Creek western of Sinkhole fork of Tigar River and bounded by a line running E & W by Land laid out to Wm Wood, NW & SE by Land granted to Bright Quarre & Robt Goodjon, and hath such shape and marks as the above Plat represents, Surveyed the 8th of May 1817 By J Whitten D.S.

Wm Butler & David Johnston was the Chain bearers

Recorded the 12th day of June 1817 by John Young C. S.