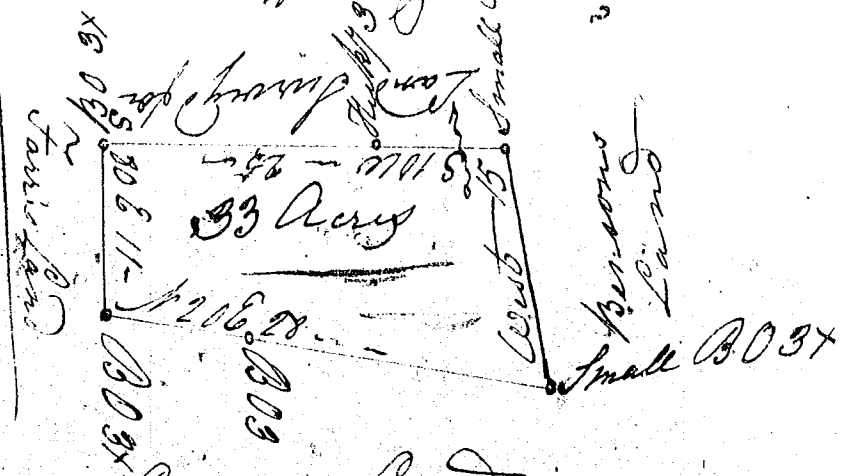


Scale ten Chs for Inch } 139,

John Young
John Benson



Carr's Land
South Carolina.

Pursuant to a warrant from John Young Esq^r Comm^r of Locations ~~and~~ the District of Greenville dated the 14th day of Jan^y 1817 I have admeasured & laid out unto John Benson a tract of Land containing thirty-three Acres, situate in the District Above-said, on a small branch of Saluda River, bounded by a line running S^W by Lands Surveyed for Darnell, S^E by Tarr's Land, N^E by Carr's Land, West by Benson's Land; and plat such form & marks as the above Plat represents.

Surveyed the 18th Day of Jan^y 1817 by
J. C. Austin D^S
Recorded the 13th day of March 1817 by
John Young, C^L