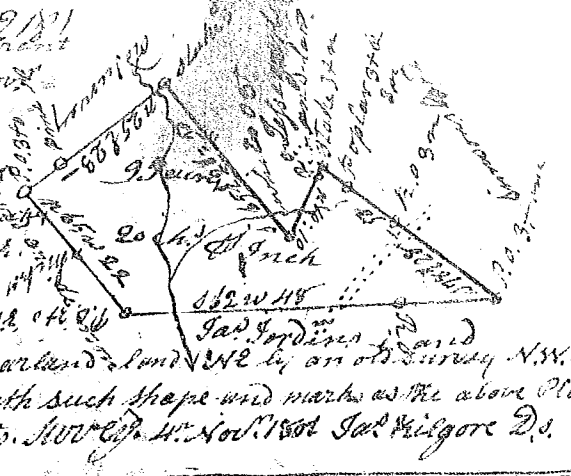
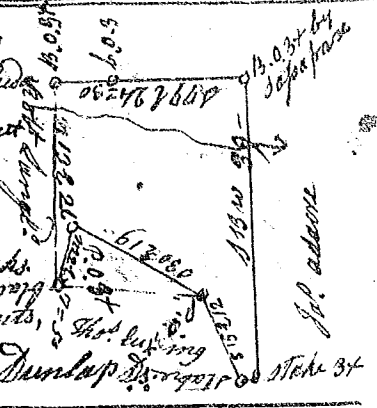


118 (9/11)  
 S<sup>c</sup> Carolina, Pursuant to a warrant  
 from John Thomas, Com. dated 2<sup>nd</sup> Nov<sup>r</sup>  
 1801 I have admeasured and laid  
 out unto John Desham a tract of  
 ninety five acres of land in  
 Spartanburg District on small branch  
 of Broad Creek & fork of same creek  
 a Tygar River Bounded by lines  
 running S 44<sup>o</sup> E by James Jordins land S 44<sup>o</sup> E  
 by Simason's land N 44<sup>o</sup> E by Jesse garden's land N 44<sup>o</sup> E by an old survey N 34<sup>o</sup> E  
 by David Anderson's land, and hath such shape and marks as the above Plat  
 Recorded 19<sup>th</sup> Nov<sup>r</sup> 1801 } Certified 19<sup>th</sup> Nov<sup>r</sup> 1801 Jas. Wilgore D.



South Carolina Laurens District Pursuant to  
 a warrant from John Thomas Com. of loc<sup>o</sup> N side Saluda  
 dated 25<sup>th</sup> Nov<sup>r</sup> 1801 I have admeasured and laid out  
 unto Josiah Williams a tract fifty six acres of  
 land in said District on a branch of Duncan's  
 branch of Enoree river, and hath such shape, marks  
 buttings and boundings as the above Plat represents,  
 Recorded 28<sup>th</sup> Nov<sup>r</sup> 1801 } Certified 28<sup>th</sup> Nov<sup>r</sup> 1801 Jm. Dunlap D.



S<sup>c</sup> Carolina Pursuant to a warrant  
 from John Thomas Com. of loc<sup>o</sup> dated  
 12<sup>th</sup> Nov<sup>r</sup> 1801 I have surveyed for  
 William Wells & James Smith a  
 tract of seven hundred & sixty  
 five acres of land in Spartanburg  
 District on waters of Broad Creek  
 and Baxters branch & other  
 branches of main Pacolat river &  
 N pacolat bounded N by Thomas D<sup>o</sup>  
 goes land E by Nelson's & goes land  
 S by goes & Baxters lands. W. by Volant  
 and Mr. Millins land and hath such  
 shape, marks, buttings as the above  
 Plat represents, Surveyed 23<sup>rd</sup> Nov<sup>r</sup> 1801  
 Jas. Smith D.



Recorded 7<sup>th</sup> Dec<sup>r</sup> 1801  
 Newberry District, Pursuant to a warrant from John  
 Thomas Com. of loc<sup>o</sup> N side Saluda dated 6<sup>th</sup> March 1800  
 I have admeasured and laid out unto Francis  
 Higgins a lot of land containing Seventy four  
 acres in said District on waters of said Saluda  
 bounding S 44<sup>o</sup> E by said Higgins land S E on corner land N E and land the lot of  
 John Glen Dec<sup>r</sup> and hath such shape and marks as the above plat represents  
 Recorded 10<sup>th</sup> Dec<sup>r</sup> 1801 } Certified March 12<sup>th</sup> 1800 Wm. Caldwell D.

