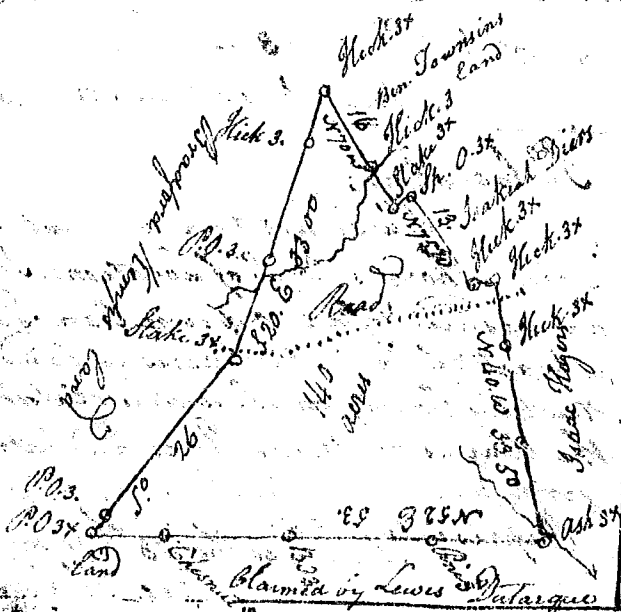


State of S^c Carolina

Pursuant to a warrant from John Thomas Esq^r Com^r of Locations N^o Saluda dated this day, I have admeasured and laid out unto Boardwine Waters a tract of Ninety five acres of Land in Spartanburg County on the Branches of two Mile Creek of Enoree River Bounded NW on John D. Kerns lands SW on William Stones Land SE on James Hendricks lands and N on Fullers land and hath such shape and marks as the above plat Represents

Surveyed the 11th Nov^r 1793

Robert Hanna Esq



Pursuant to a warrant from John Thomas Esq^r Com^r of Locations N^o Saluda dated the 15th day of Feb^r 1794 I have admeasured and laid out unto Nathan Beaver dam Creek in Laurens County Bounded on the East by Bradford Camps land on the NW by Lewis Dutarques land SW by Isaac Rogers Land and SE by Isiah Dicks land and hath such shape & marks as the above plat Represents

Surveyed this 15th day of Feb^r 1794

Isa. Towns Esq