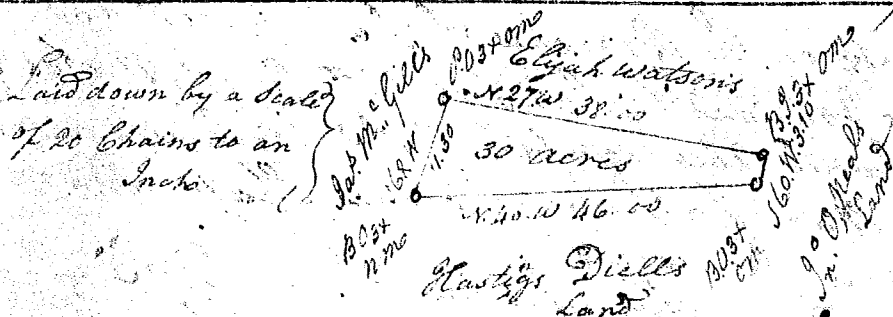


S. Carolina

Pursuant to a warrant from John Thomas Esq. Com. of Locations & Saluda dated this day, I have admeasured and laid out unto William Moore a tract of one hundred and One Acre of Land in Spartanburg County on the branches of Lock Creek of Enoree River running N. with Isaac Hambys land W. with John Hambys, S. with Enoch Hoopers & N. E. with William Hambys lands & hath such form & marks as the above plat Represents Surveyed the 1st Nov. 1793

Robert Hanna Esq.



State of S. Carolina } Pursuant to a warrant from John Thomas Esq. Com. of Locations & Saluda dated the 3^d day of Feb. 1793 I have admeasured & laid out unto Elijah Watson a Tract of thirty acres of Land on the waters of Mudlick Creek in Laurens County having such marks & boundaries as the above plat Represents Surveyed the 11th Feb. 1793

John Hunter Esq.