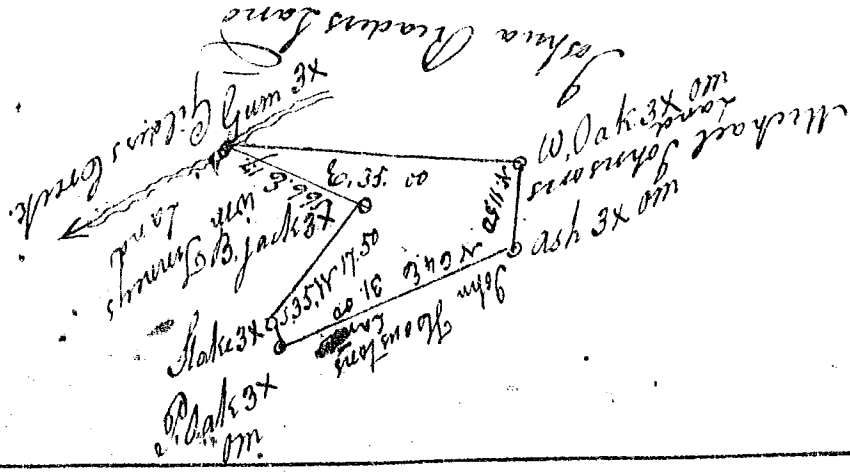
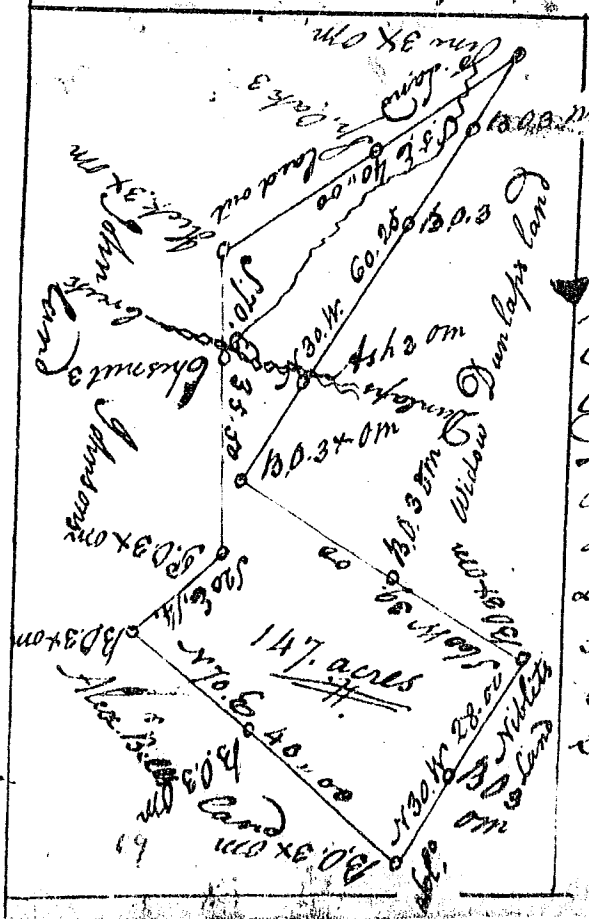


Joshua Reader's plat  
of 40 acres



By a lease of 20 Chs.  
to an inch

S. Carolina  
Pursuant to a Warrant from John Thomas Esq. Com. of Locations N. Saluda dated the 10. day of March 1793. I have admeasured & laid out unto Joshua Reader a Tract of forty acres of land in Newbury County on Gilders Creeks Bounded by a line Running E by land laid out for Joshua Reader, By a line Running N. by lands laid out to Michael Johnson, By a line Running N.W. by lands by lands laid out to John Houston, and Bounded on all sides By lands held by Wm. Tinney and hath such shape & marks as the above plat Represents  
Surveyed the 13. March 1793  
Mason D



S. Carolina  
Pursuant to a warrant from John Thomas Esq. Com. of Locations N. Saluda dated the 13. day of April 1793. I have admeasured & laid out unto John F. Wolke a tract of one hundred & 47 acres of land in Laurens County on a Branch of Rayburns Cree. Called Dunlaps Creek S. & E. By ~~land~~ land John Johnsons & Alex. Bell land N.W. N.E. By the widow Dunlaps and Solomon Nettles land and West by Lands laid out unknown & hath sides Shape & marks as the above plat Represents  
Surveyed the 29. April 1793  
By John. Jones  
J.S.