

State of S. Carolina

Pursuant to a warrant from John Thomas Esq. Comr. of Locations in the district of Ninety Six, dated the 5th day of Dec. 1792. I have admeasured & laid out unto John Jay a tract of land containing one hundred & sixty eight acres situate in Newbury County on permeto branches waters of Bush River. Bounded S. on land of S. John Jay's N.W. on land of Peter ~~Hawkins~~ Hawkins, S.W. on land of William Pearson, and S.E. on land of John Jay: and hath such shape form & marks as the above plat represents.

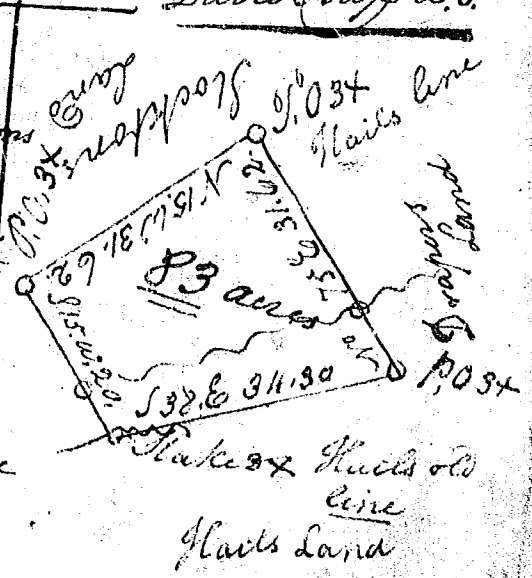
Surveyed the 15th Dec. 1792

David Ruff D.S.

S. Carolina Ninety Six district.
In pursuance of a warrant from John Thomas Esq. Comr. of Locations N. of Saluda River. I have admeasured & laid out unto Thomas Draper a tract of Eighty three acres of Land in Union County on Mill Creek of the Collet River. Bounded Eastward by his own land & North East by Stockton's land & West by Hails land & hath the such shape and marks as the above plat represents.

Surveyed the 19th day of Dec. 1792

Vardry M. Gee D.S.



Said down by a scale of 2000 Chains to an Inch