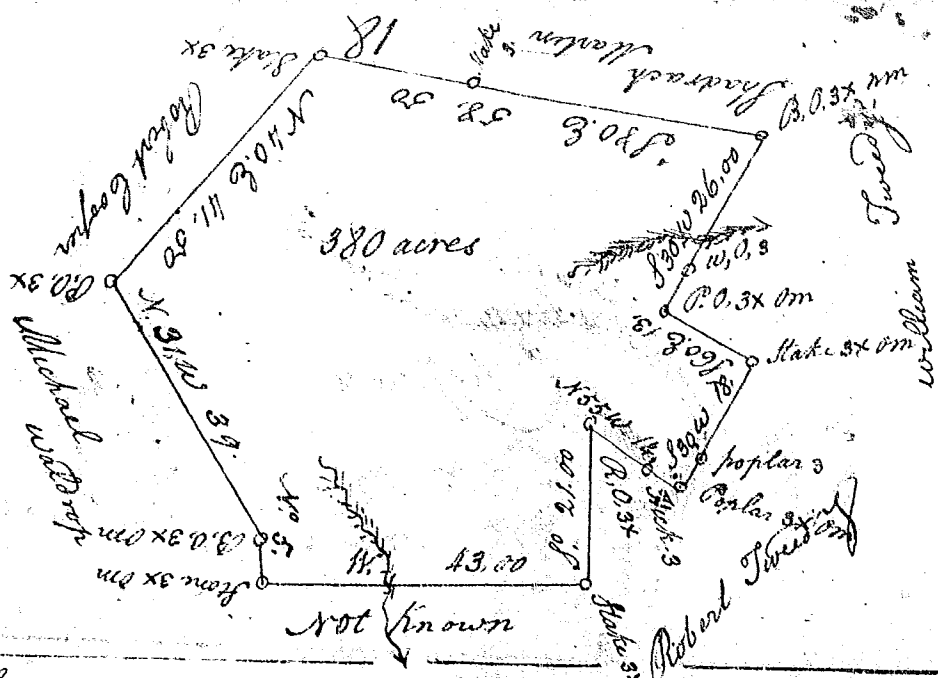
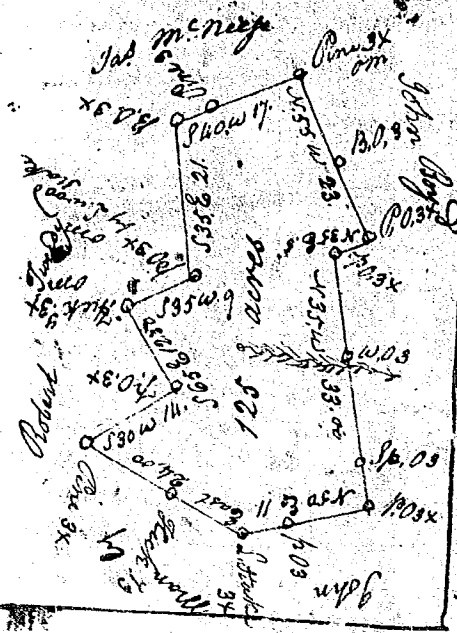


Laid down by a scale of 20 chains to an Inch



S. Carolina Pursuant to a warrant from John Thomas Esq. Comr. of Locations No. of Saluda, dated the 20th March 1792. I have admeasured and laid out unto James M. Nees a Tract of land containing three hundred and eighty acres situate in Laurens County on a branch of Twedy's Creek the waters of Little River Bounded S. on Shadrach Martin W. on William Twedy and Robert Cooper and Robert Twedy N. on Michael Waldrop. E. on Robert Cooper. & hath such & marks as the above plat Represents
 Surveyed the 25th of March 1792. John Rodgers Ds.



S. Carolina Pursuant to a warrant Laurens County from John Thomas Esq. Comr. of Locations No. Saluda Dated the 20th of March 1792, I have admeasured & laid out unto James M. Nees a tract of one hundred and twenty five acres of land in said County on a small branch of Little River, Bounding S. on James M. Nees W. on John Boyd N. on John Manly E. on Robert Twedy, & hath such shape & marks as the above plat doth Represents.
 Surveyed the 25th March 1792
 John Rodgers Ds.