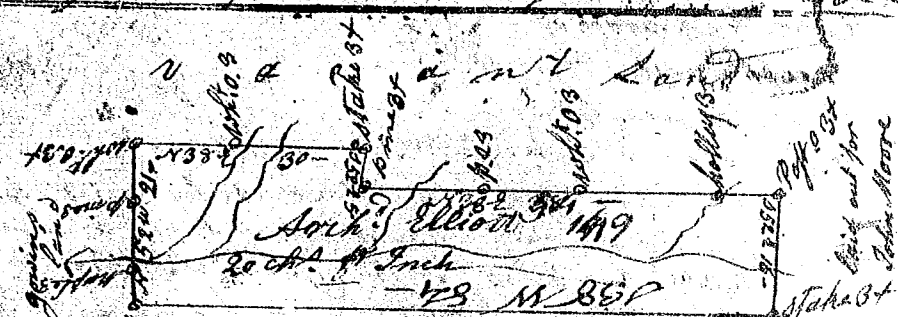




State of South Carolina  
 Pursuant to a warrant  
 from John Thomas Esq. 10<sup>th</sup> day of March 1798  
 Commissioner of Locations I have measured  
 and laid out unto John Thomas Esq. a tract of  
 land and sixty seven acres of land situated in Greenville  
 County on the North side of Saluda River bounded & surveyed  
 by John B. Wardly by land laid out for Thomas Mackles  
 and by land laid out for James M. Thomas on all their  
 sides by vacant land and hath such chapel marks  
 as the plat represents  
 Surveyed the 15<sup>th</sup> day of March 1798  
 Recorded the 15<sup>th</sup> day of Decr 1798 George Salmon D.S.



State of Carolina  
 Pursuant to a warrant from John Thomas  
 Esq. Commissioner of Locations Dated the 30<sup>th</sup> day of March  
 1798 I have measured and laid out unto John Thomas Esq.  
 a tract of one hundred and forty nine acres of land  
 Situate in Greenville County on the side of Duran's tract  
 of the Middle Fork of Saluda River bounded & surveyed  
 by John B. Wardly by land laid out for John  
 Moor and hath such chapel marks as the above  
 Plat represents  
 Surveyed the 31<sup>st</sup> day of March 1798  
 Recorded the 11<sup>th</sup> day of Decr 1798 George Salmon D.S.