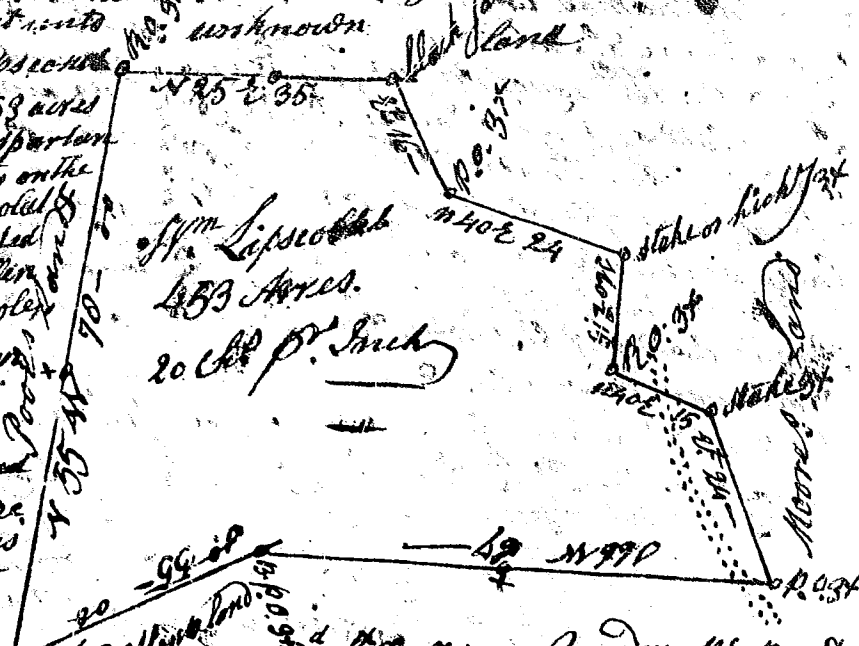


State of S^c Carolina

1417

Pursuant to a warrant from John Thomas Esq. Com^r of Loc^y N^o 34 I have admeasured and laid out unto William Lipscomb

tract of 453 acres of land in Spartanburg County on the branches of pocolah thicket, bounded E. by David Allen land or by Pooler land & by unimproved land W. by unimproved land, and with such shape, form & marks as the above plat represents,

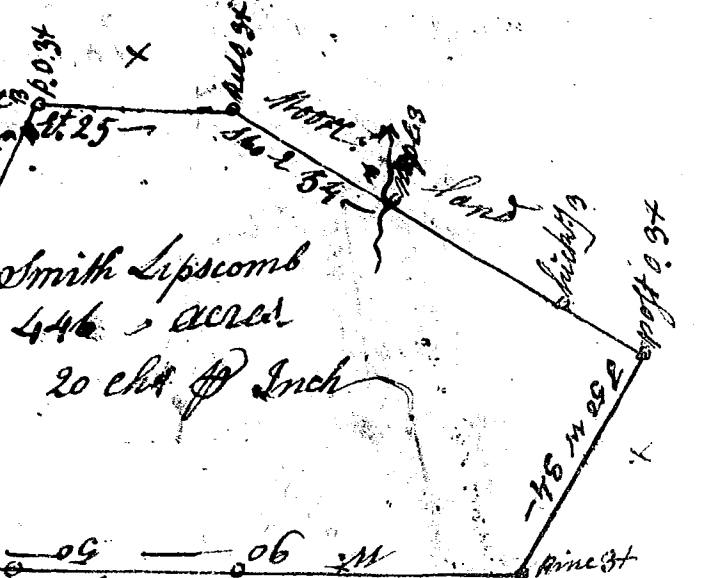


Wm Lipscomb
453 Acres.
20 ch of Inch

Recorded 8th Dec^r 1797. Survey 7th Dec^r 1797. Wm Bee Esq. Deft. Griffin

South Carolina
Pickney District

Pursuant to a warrant from John Thomas Esq. Com^r of Loc^y N^o 34 I have admeasured & laid out unto Smith Lipscomb tract of 446 acres of land in said District part of Tanburg County on the branch of thicket Creek Post



Smith Lipscomb
446 acres
20 ch of Inch

bounded S. on Dickson's land & on Ignation's land and with such bounds & marks as the above plat represents,

Survey 7th Dec^r 1797. Wm Bee Esq. Deft. Griffin
Recorded 8th Dec^r 1797.