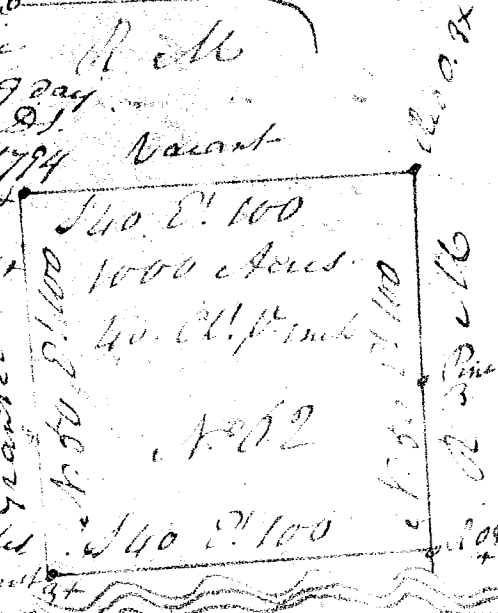
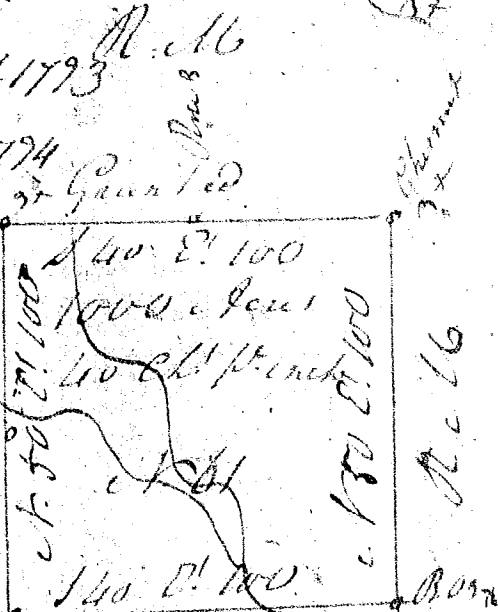
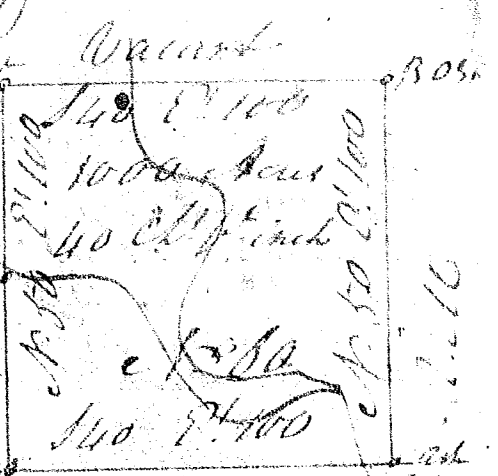


South Carolina (367)

Warrant to a warrant from (P. 367)  
from John Thomas Esq. Commissioner  
of location in Washington District  
dated the 24 day of August 1793  
I have admeasured and laid out  
unto Robt Middleton a tract of Maple  
land in said District containing  
one thousand Acres lying on a  
branch of Saluda River Greenville  
County and hath such thaps & Necks  
marks as the above Plat represents.  
Surveyed this 29 day of August 1793  
By Tho. Luffman Esq.

Recorded this 15 day of December 1794  
S. Carolina. Warrant to  
Warrant from John Thomas Esq. Com  
missioner of location in Washington  
District dated the 24 day of August  
1793 I have admeasured and laid  
out unto Robt Middleton a tract of  
land in said District containing  
one thousand Acres lying on a  
branch of Saluda River Greenville  
County and hath such thaps & Necks  
marks cutting & bounding as the above  
Plat represents. Surveyed this 29 day  
of August 1793 by Tho. Luffman Esq.

Recorded this 15 day of December 1794  
S. Carolina. Warrant to all  
Warrant from John Thomas Esq. Com  
missioner of location in Washington Dis  
trict dated the 24 day of August 1793  
I have admeasured and laid out unto  
Robt Middleton a tract of land in said  
District containing one thousand acres  
lying on a branch of Saluda River  
Greenville County and hath such thaps  
and marks cutting & bounding  
as the above Plat represents. Surveyed  
this 29 day of August 1793 By Tho. Luffman  
Recorded this 15 December 1794



Saluda River