

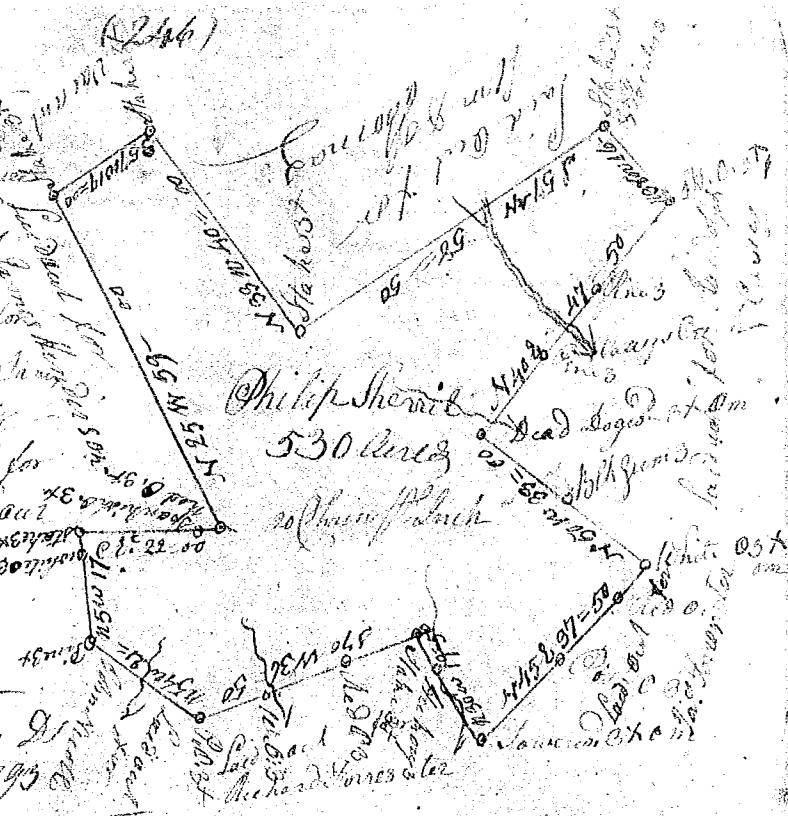
State of Carolina

Pursuant to a warrant from
John Thomas Esq. J. C. Clerk of the
Sole de River; I have admeasured
laid out into 500 Acres of land
front of the River & thirty
of land. Situate in Greenville
County on the South side of
Catawba River on both sides of
Catawba River of said River
bounded by land laid out for
John Nield Richard Forester
Forester of Land in the County
Northwardly by land laid out for
John Thomas Esq. by land laid out
for James Henderson Esq. with
such corners & marks as the
above plat represents

Surveyed the 7th March 1793

Recorded the 16th June 1793

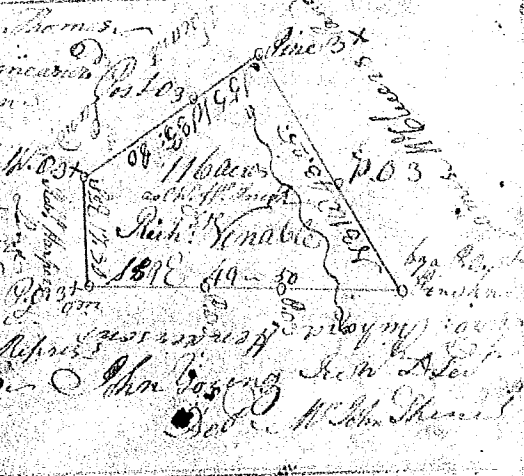
Witness my hand



South Carolina Pursuant to a warrant from John Thomas
Esq. J. C. Clerk dated the 13th March 1793, I have admeasured
laid out into Richard Venable a tract of
land of 100 Acres of land. Situate in
Richmond District of Spartanburg County on the
South side of a small branch of South Carolina
River bounded to the W. by land laid out for
Richard Venable to the E. by land laid out for
James Henderson Esq. by James Henderson land & by
land & with such corners & marks as the above plat represents

Surveyed the 13th March 1793

Recorded the 11th June 1793



South Carolina Pursuant to a warrant from
John Thomas Esq. J. C. Clerk dated the 11th Dec^r 1792
I have admeasured & laid out into John Young
a tract of one hundred & forty acres of land
situate lying & being in Greenville County
on both sides of the South Carolina
River bounded to the N. by
by Goodsons land East by an
equal boundary line
by land laid out to John Young
& to the S. by a warrant land
& with such corners & marks as
the above plat represents

Surveyed 15th Dec^r 1792

Recorded the 6th July 1793

Witness my hand

