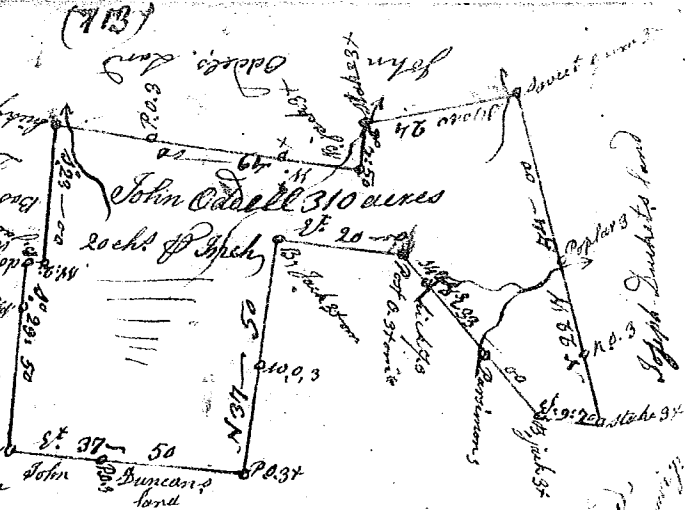
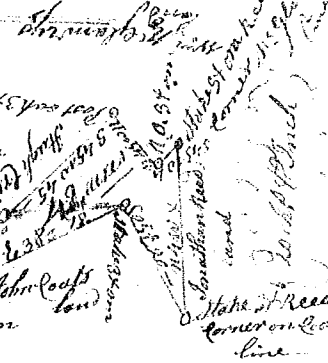


State of Carolina Pursuant to a warrant from John Thomas Comr. of locations North Saluda, I have admeasured and laid out unto John Odell a tract of 310 acres of land on a branch of the branches of Moore river in Newberry County, having such shape, marks, buttings & bounding as the above Plat represents, Surveyed 26<sup>th</sup> June 1790. Robert Hanna D.S. Recorded 2<sup>nd</sup> Oct. 1790, Del. N. Hanigan



State South Carolina Pursuant to a warrant from John Thomas Esq. dated the 1<sup>st</sup> July 1790, I have admeasured and laid out unto Charles Rowan a tract of forty acres of land situate in the district of 96 S. of Saluda below the ancient boundary on waters of Bush river, & hath such shape, marks, buttings & bounding as the above Plat represents. Certified for the 30<sup>th</sup> day of Sept. 1790. J. J. Wright D.S. Recorded the 4<sup>th</sup> Oct. 1790 Del. to self.



State of S. Carolina Pursuant to a warrant from John Thomas Esq. dated the 2<sup>nd</sup> July 1790, I have admeasured and laid out unto Charles Rowan a tract of seven acres of land in 96 District N. of Saluda below the ancient boundary on waters of Bush river and hath such shape, form and marks, buttings & bounding as the above Plat represents. Certified for the 30<sup>th</sup> day of Sept. 1790. Recorded the 4<sup>th</sup> Oct. 1790 Del. to self. J. J. Wright D.S.



South Carolina } Pursuant to a warrant from John Thomas Esq. Newberry County } Comr. of locations S. Saluda river, I have admeasured & laid out unto Thomas Barnett a tract of 150 acres of land, on the waters of Bufflow a small branch of Saluda river, & hath such shape, marks, buttings & bounding as the above Plat represents, Surveyed 5<sup>th</sup> Oct. Thos. W. Waters Recorded 5<sup>th</sup> Oct. 1790, Del. self

