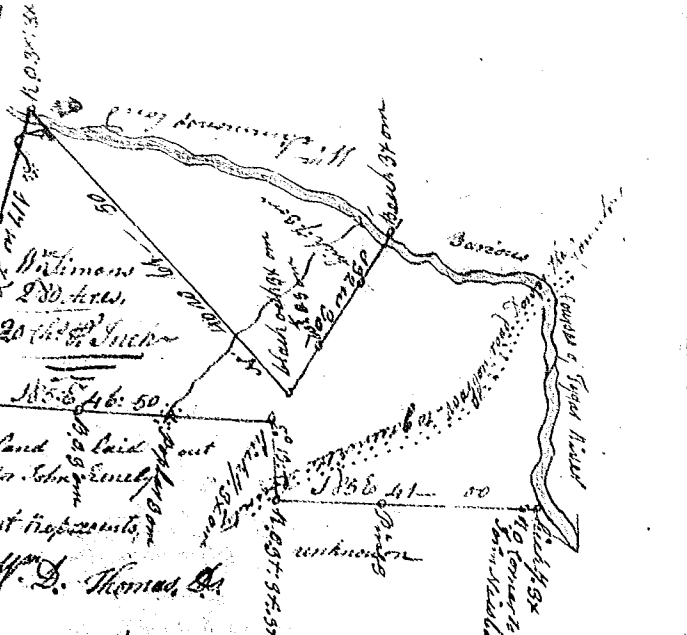
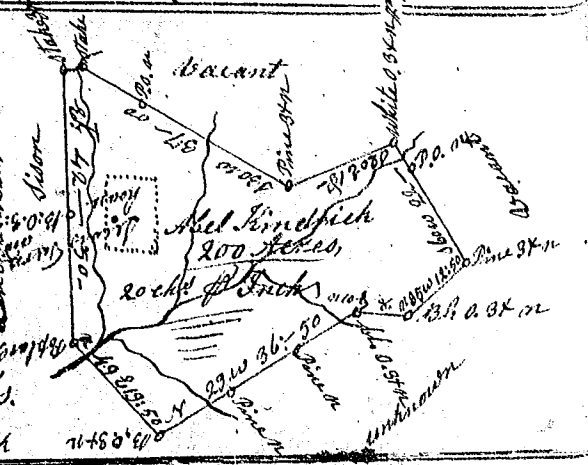


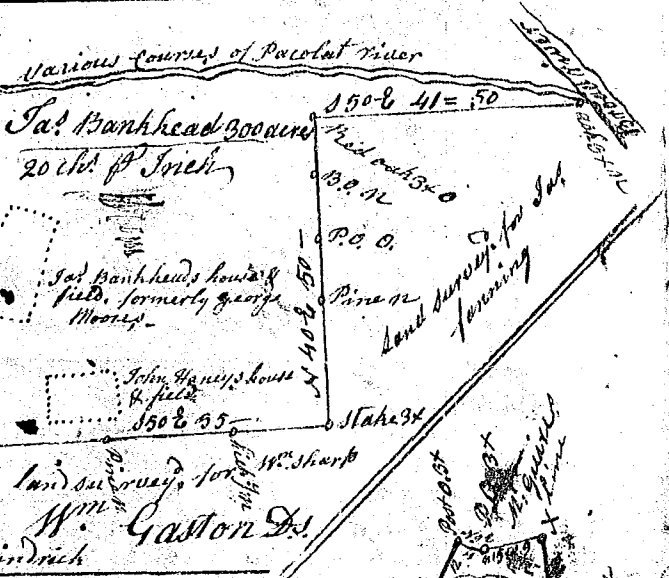
South Carolina Pursuant to a warrant from John Thomas Esq. Comr. of locat. 36th District dated 1st Jan'y 1788. I have admeasured and laid out unto William Simmons a tract of two hundred and eighty acres of land in said District in the South fork of Broad river in Spartanburg County, bounding by a line running S 70° W. by Roger Smith & vacant land, S 85° E by land survey for John Kenely, S by said Kenely, S 85° E by an old survey line, the owner unknown, thence up said river to W^m Simmons corner, S 92° W by 40 w. by said Simmons land, and hath such shape & marks as the above Plat represents,
 Survey 2nd Jan'y 1788, W^m D. Thomas Esq.
 Recorded 15th Jan'y 1789, Del. Salt



South Carolina Pursuant to a warrant from John Thomas Esq. Comr. of locations 36th District Dated 3rd Jan'y 1788, I have admeasured & laid out unto Abel Kindrick a tract of 200 acres of land in said Dist. on the waters of Pacolat river, bounding by a line running E. by lands survey for W^m Simm, all other sides vacant land, and hath such shape & marks as the above Plat represents, S 111° 30' E 3rd Jan'y 1788, J. Hopkins Esq.
 Recorded 15th Jan'y 1789 - Del. Kindrick



South Carolina Pursuant to a warrant from John Thomas Esq. Comr. of locations in 36th District Dated the 22nd Dec^r 1788, I have admeasured and laid out unto James Bankhead a tract of 300 acres of land in said District, on Broad & Pacolat river, bounding by a line running S 70° W. by land survey for Robert Hamilton, by a line S. E. Williams Sharp, land, by a line S. E. & S. E. James Furnings land, the other sides on Pacolat & Broad rivers and hath such form & marks as the above Plat represents,
 Survey 24th Dec^r 1788.
 Recorded 15th Jan'y 1789. Del. A. Kindrick



State of Carolina Pursuant to a warrant from John Thomas Esq. Commissioner of locations, I have admeasured and laid out unto George Bayley a tract of 144 acres of land in 36th District, on side of Broad river, and hath such shape, form, marks, boundaries and boundaries as the above Plat represents,
 Survey 5th Dec^r 1788 Charles Sims
 Recorded 15th Jan'y 1789, Del. A. Kindrick Esq.

