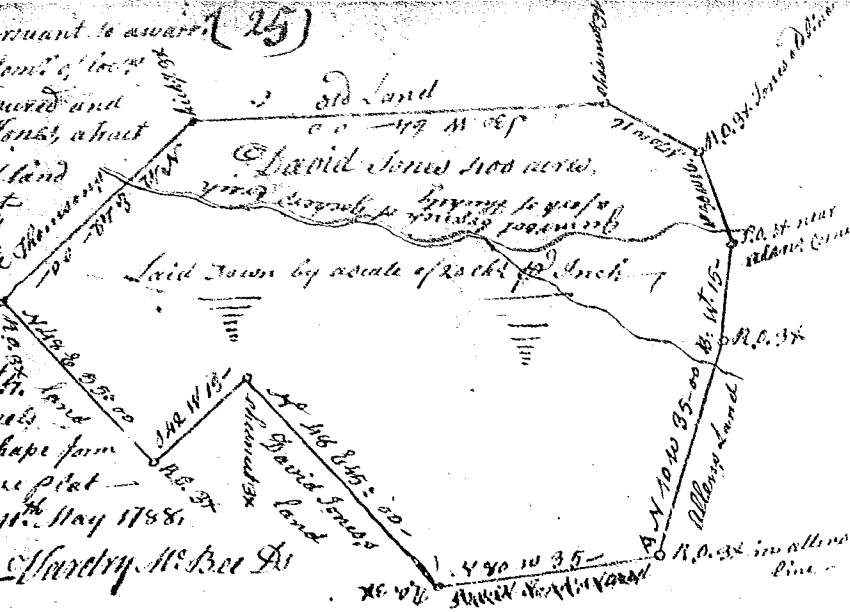


State of S<sup>c</sup> Carolina Pursuant to a warrant (25)

from John Thomas Esq. Com<sup>r</sup> of loc<sup>s</sup> N<sup>o</sup> 10 Saluda, I have admeasured and laid out unto David Jones, about of four hundred acres of land in the District on Gumroot-branch of Cochoy-creek a forth of Wickety on the South Side, waters of Broad River, bounded N.W. by David Jones land, S. by Swan Thomson & W. Howells land, and hath such shape form and Marks as the above Plat represents, Survey<sup>d</sup> 16<sup>th</sup> May 1788.

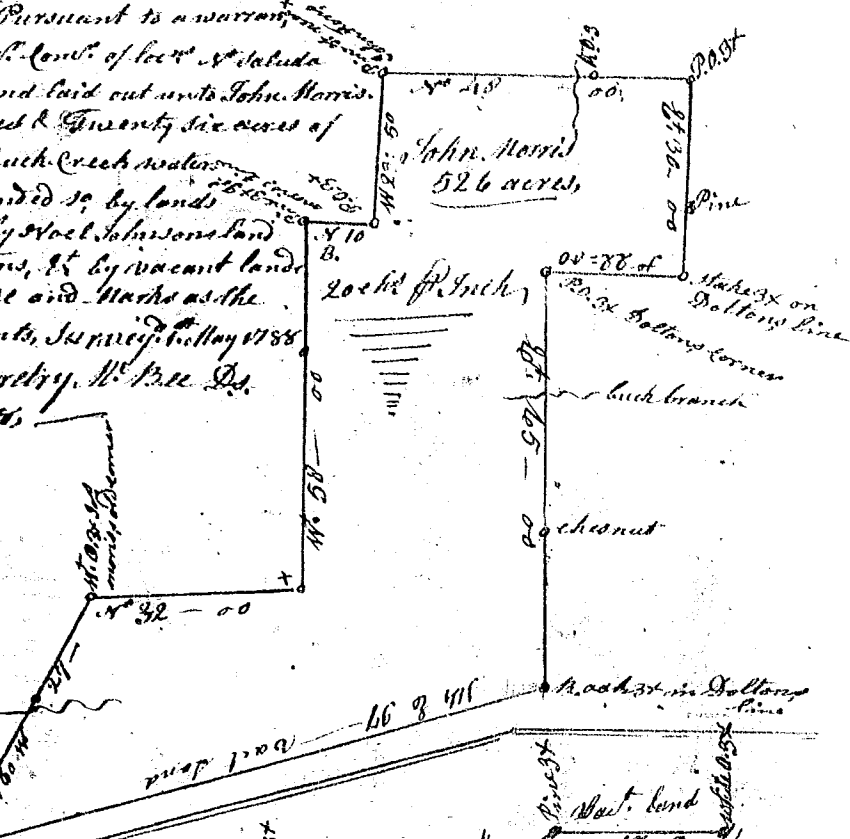
Recorded 17<sup>th</sup> June 1788, Survey<sup>r</sup> M<sup>r</sup> Bree Esq



State of S<sup>c</sup> Carolina Pursuant to a warrant

from John Thomas Esq. Com<sup>r</sup> of loc<sup>s</sup> N<sup>o</sup> 10 Saluda I have admeasured and laid out unto John Morris, a tract of five hundred & Twenty six acres of land, on branches of buck-creek waters of Pacolat river, Bounded so, by lands of J. G. Morris, N. by Stock Johnsons land N. by lands of Gollens, S. by vacant lands and hath such shape and Marks as the above Plat represents, Survey<sup>d</sup> 16<sup>th</sup> May 1788.

Recorded 17<sup>th</sup> June 1788, Survey<sup>r</sup> M<sup>r</sup> Bree Esq



S<sup>c</sup> Carolina Pursuant to a warrant

from John Thomas Esq. Com<sup>r</sup> of loc<sup>s</sup> N<sup>o</sup> 10 Saluda, I have admeasured and laid out unto Edward Clark about of 195 acres of land, on both sides of Sarato-creek, Bounded E. & S. by land of Teate & Quins. S.W. by vacant lands, and hath such shape & Marks as the above Plat represents, Survey<sup>d</sup> 26<sup>th</sup> May 1788.

Recorded 16<sup>th</sup> June 1788, Survey<sup>r</sup> M<sup>r</sup> Bree Esq

