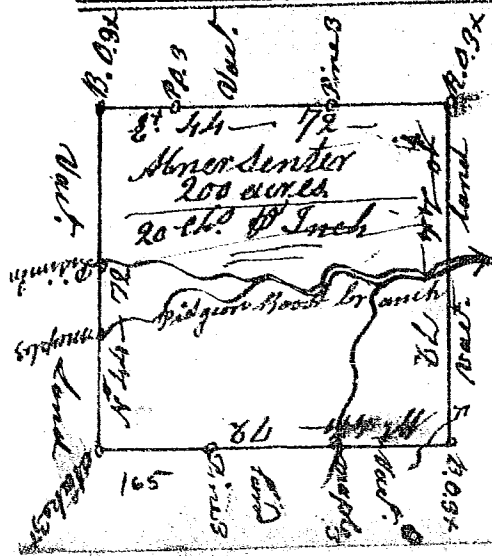


State of South Carolina  
Ninety six district.

Pursuant to a warrant from under the hand and seal of John Thomas Esq. Comr. of Locations bearing date the 20<sup>th</sup> day of March 1787, I have admeasured & laid out unto James Crawford a tract of land containing 320 acres situate lying and being in Union County on the east side of fair forest creek & on both sides of beaver dam creek, a branch of fair forest, and hath such shape, marks, & boundaries as the above plat represents & surveyed the 27<sup>th</sup> day of March 1787 by And<sup>rs</sup> Thomson Esq. accorded 10<sup>th</sup> Dec<sup>r</sup> 1787 and O.C. to Jas. Crawford.



South Carolina } Pursuant to a warrant  
Greenville County } from John Thomas Esq.  
Commissioner of Locations No. Subula river }  
I have admeasured & laid out unto Thomas }  
Senkins a Tract of one hundred & }  
ninety nine acres, in 96 district, Greenville }  
County on a branch of Cripple Creek water }  
of Neelys River, and hath such shape, marks }  
& boundaries as the above Plat }  
Represents, Certified the 4<sup>th</sup> Dec<sup>r</sup> 1787 }  
Recorded 15<sup>th</sup> Dec<sup>r</sup> 1787 } John Lewis Esq. }  
Dec<sup>r</sup> Mr. Lewis



South Carolina 96 district  
Pursuant to a warrant from John Thomas Comr. of Locations dated 8<sup>th</sup> Oct<sup>r</sup> 1787, I have admeasured & laid out unto Abner Senter a tract of 200 acres of land in Spartanburg County, on the S<sup>th</sup> side of the 1<sup>st</sup> forke of Sygar river, on both sides of the Pidgeon root branch, bounded on all sides by Vacant Lands, and hath such shape & marks as the above Plat represents, Surveyed 10<sup>th</sup> Oct<sup>r</sup> 1787, Recorded 17<sup>th</sup> Dec<sup>r</sup> 1787, And<sup>rs</sup> Thomson Esq. Del. self