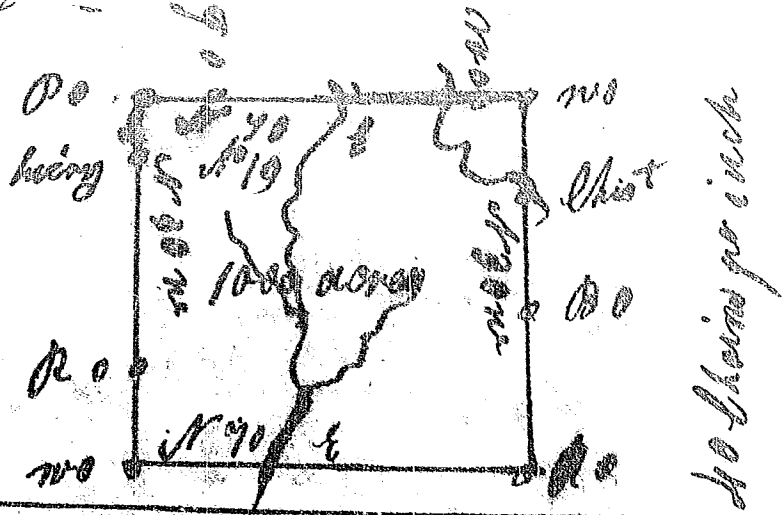


274



South Carolina pursuant to a warrant from of the
 Thomas & Co Commissioners of locations it affords
 of have as measured and laid out unto Thomas
 Atkins a tract of land containing one thousand
 acres situate in greenwich county in the late
 purchase made from the Cherokee Indians
 on a branch of the main fork of green River
 bounding S E and S W on land of the said Atkins
 on other sides by vacant land and hath such
 other shape form and marks as the above plot
 Represents pursuant to the 10th day of November
 1794 Robert Pinner Do