

State of Carolina

Pursuant to a warrant from John Thomas Esquire Esquire of the County of Union, I have admeasured and laid out unto Silman Bobo, a tract of one hundred and ninety five acres of land on Elisha's Creek a branch of Crooked River, and in Union County of hath such form and marks as the above plat represents.

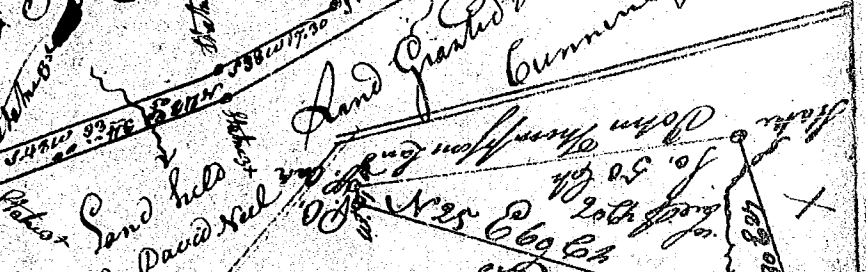
Surveyed the 30th Oct. 1787 by Rob Hanna Esq

Recorded the 5th day of November 1787. Del. Blatchstock

Pursuant to a warrant from John Thomas Esq. Esquire of the County of Union, I have admeasured and laid out unto Silman Bobo a tract of 250 acres of land, on the North side of Crooked River, in Spartanburg County, and hath such form and marks as the above plat represents.

Surveyed the 3rd of Feb^r 1789 by Rob Hanna Esq

Recorded the 5th day of March 1789



Pursuant to a Warrant from J. Thomas Esq. Esquire of the County of Union, I have admeasured and laid out unto W. J. Jones a tract of one hundred and ninety five acres of land on Monticello Creek a branch of Crooked River, and in Union County of hath such form and marks as the above plat represents.

Recorded this 5th Nov. 1789

Zachariah Bullock

Delivered To

D. S.