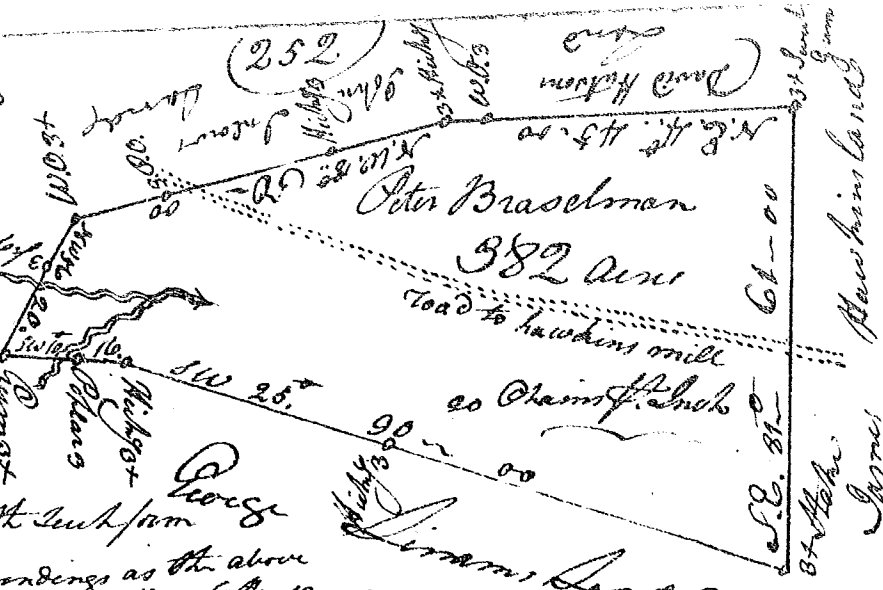


South Carolina
 Pursuant to a warrant from John Thomas Esq. Comm. of Locations in 96 District N. of Saluda. I have admeasured & laid out unto Peter Braselman a tract of land containing three hundred and eighty two acres situated on a branch of Tygar River called Beeches branch of hattsuck form



marks, buttings & bounding as the above plat represents. Certified the 28th Oct. 1787
 Recorded the 30th Oct. 1787
 Delivered to Edson

South Carolina
 Pursuant to a warrant from John Thomas Esq. Comm. of Locations in 96 District N. of Saluda. I have admeasured & laid out unto Peter Braselman & Edson a tract of 409 acres situated on the western branch of Tygar River and hattsuck form. marks buttings & bounding as the above plat represents



Surveyed the 25th Oct. 1787
 Recorded the 30th Oct. 1787