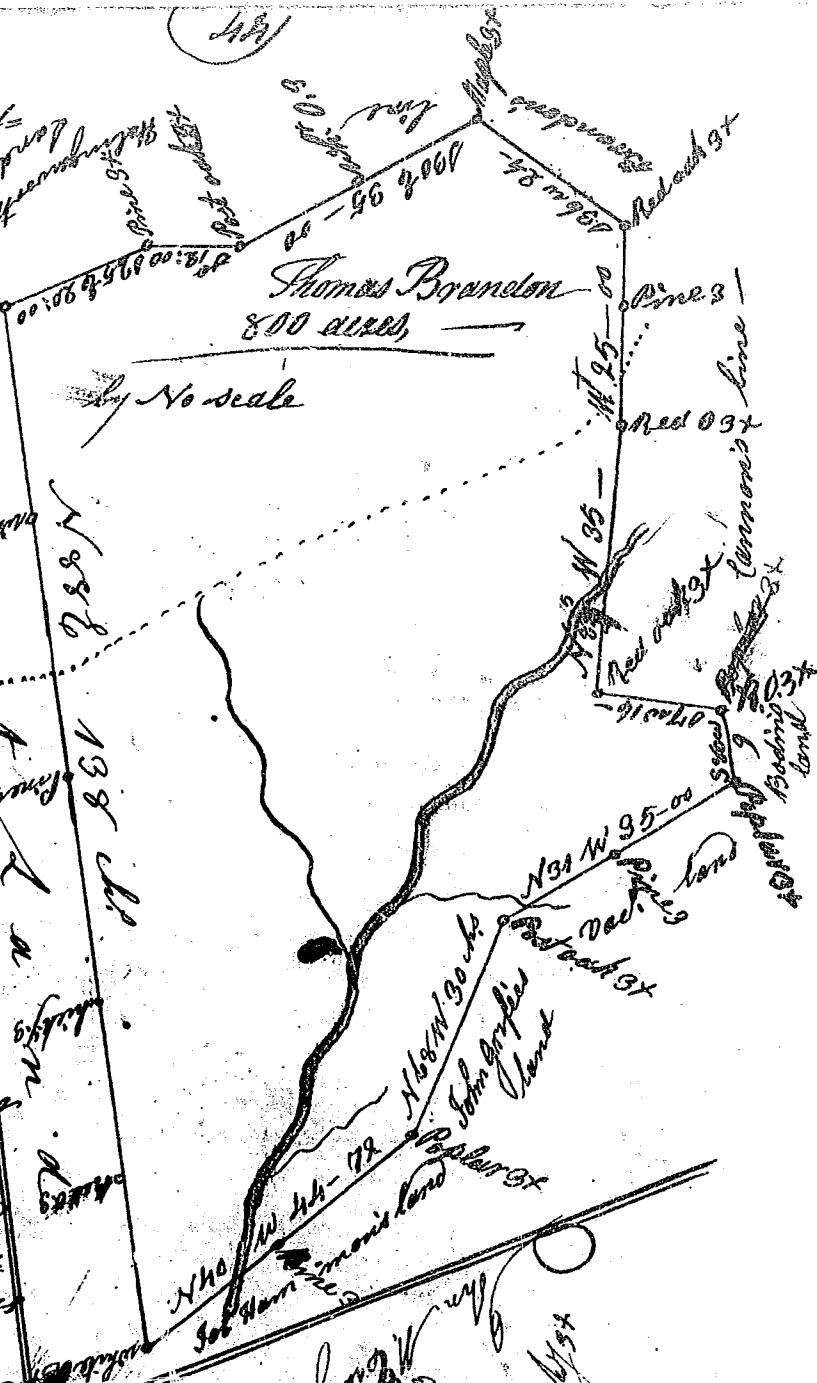


148

South Carolina  
 I have caused to be ad-  
 -measured and laid  
 out unto Thomas  
 Brandon a tract of  
 lan containing 767  
 eight hundred acrs  
 of land in Ninety  
 six district on Broad  
 Creek, south side of  
 Broad River, and  
 hath such form &  
 Marks, butings and  
 bounelings as the above  
 Plat Represents -  
 certified for the 1<sup>st</sup> day  
 of August 1786  
 Charles Sims Dr.  
 Recorded 18<sup>th</sup> Aug 1786,



By No scale

State of S<sup>c</sup> Carolina  
 Pursuant to a warrant  
 from John Thomas Esq.  
 C. J. of the said river  
 I have admeasured  
 laid out unto Joseph A.  
 Adair, a tract of 120 acres  
 of Land situate in  
 Laurens County 96 D.  
 on a small branch of Duncan  
 Creek, bounded N<sup>o</sup> on John  
 M. Prory W<sup>o</sup> on land laid out to  
 John Adair Sr. on S<sup>o</sup> Adair & that  
 such shape & marks as the above  
 plat Represents  
 Survey 15<sup>th</sup> Aug 1786  
 Ch. M. Moore Dr.  
 Recorded 30<sup>th</sup> Aug 1786, Dist. Clk.

