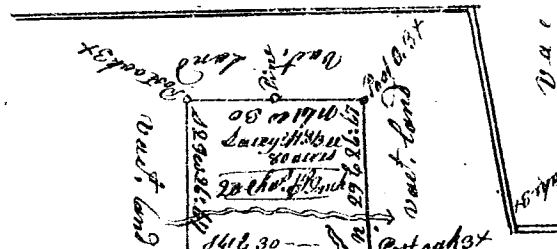
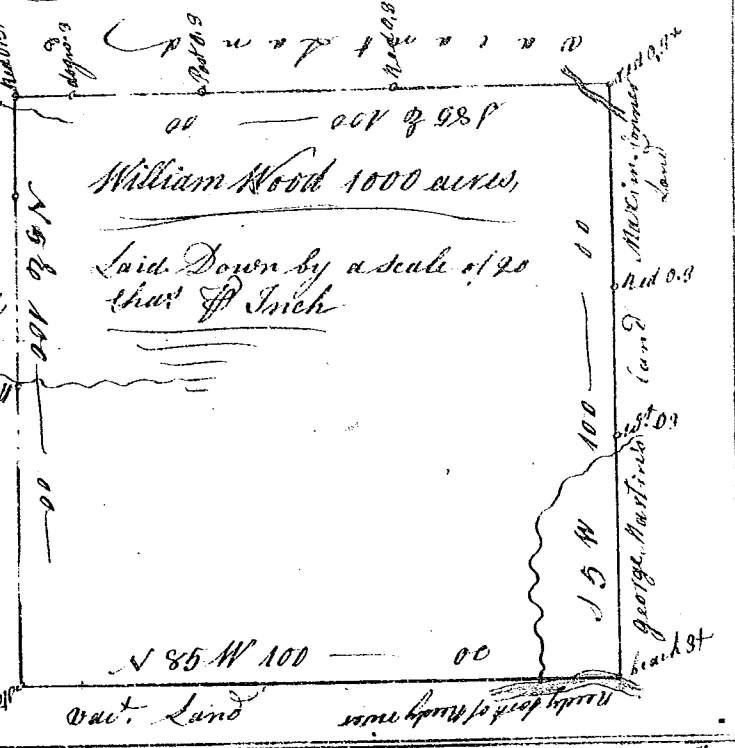
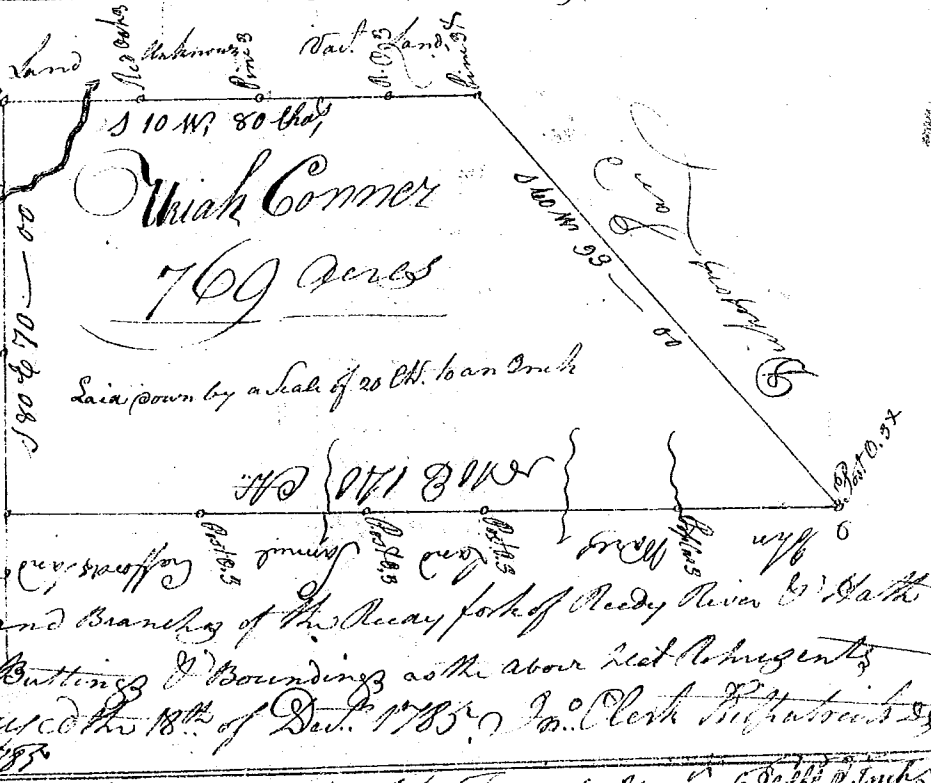


State of South Carolina,
 Pursuant to a warrant from
 John Thomas Esq. Commissioner of locations
 dated the 24th Nov. 1785, I have admeasured
 and laid out unto William Wood a tract
 of one Thousand acres of land, situate
 in 6th District the North side of Needy fork
 of Needy River, and branches of horse
 Creek of said River, and hath such shape,
 marks, buttings and boundings as the
 above Plat Represents,
 Survey, 24th Nov. 1785
 John C. Kilpatrick D.
 Recorded 30th Dec. 1785



State of South Carolina, Pursuant to a warrant from John Thomas
 Commissioner of locations granted 25th Oct. 1785, I have admeasured and laid out unto
 Lucy Mabie a tract of land containing eighty acres of ~~land~~ in 6th District east of the Indian
 boundary in Peter's creek a branch of Picolet river below William Wofford's land, bounded on all
 sides by vacant land, and hath such form, shape and marks as the above plat Represents,
 Recorded 30th Dec. 1785. Survey, 18th Nov. 1785. by Jeph Cornell D.

State of South Carolina
 Pursuant to a warrant
 from John Thomas Esq.
 Com. of Locations
 dated the 17th Oct. 1785
 I have admeasured
 and laid out unto
 Uriah Corner
 a tract of 769
 seven hundred and sixty
 nine acres of land
 situate in 6th district
 on the branches of the
 Golden grove creek of the
 River, and branches of the
 Needy fork of Needy River
 and hath such shape, marks
 buttings and boundings as
 the above Plat Represents
 Surveyed the 18th of Dec. 1785. J. Clerk Richard D.
 Recorded the 30th Dec. 1785



State of South Carolina Pursuant to a warrant from John Thomas Esq. Com.
 of locations Dated 24th Oct. 1785. I have admeasured and laid out unto
 Martin Armstrong, a tract of eighteen and a half acres of land, situate
 in 6th District on both sides of a branch of Tiger river, and hath such
 shape, marks, buttings and boundings as the above Plat Represents,
 Survey, 28th Oct. 1785
 John C. Kilpatrick D.
 Recorded 31st Dec. 1785



Del. John Corner Justice