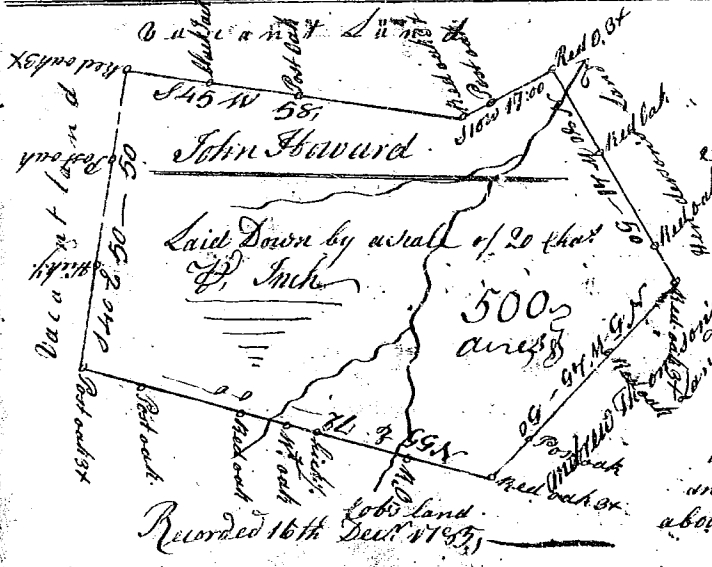
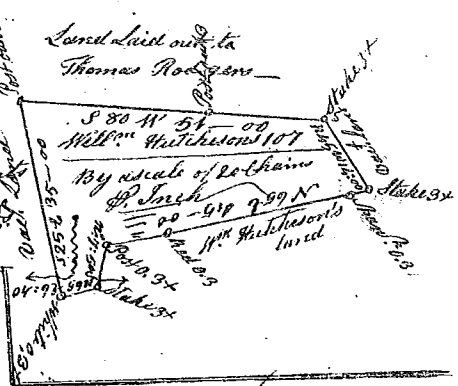
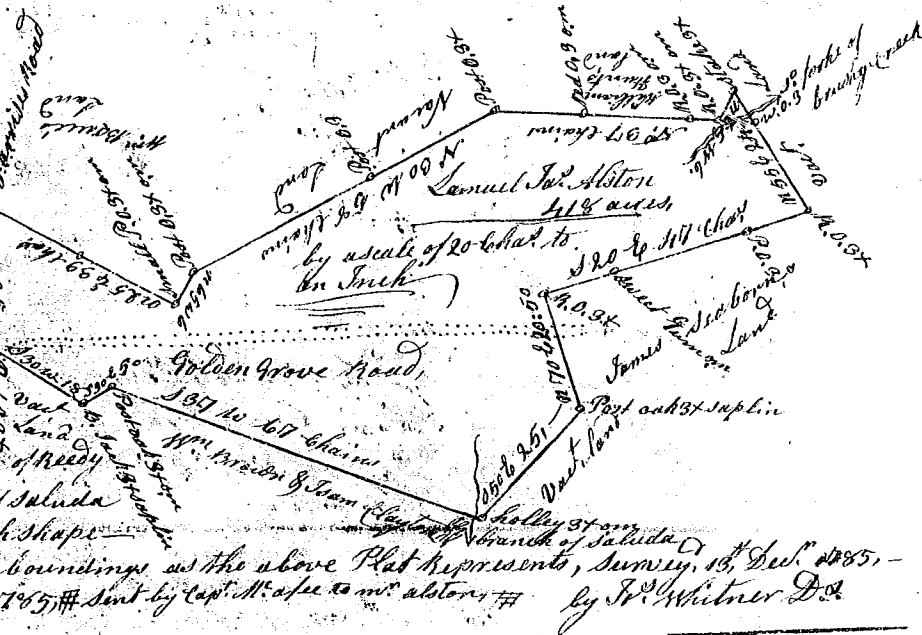


311
 State of South Carolina, Pursuant to a warrant from John Thomas Esq. Commissioner of locations, I have ad-measured and laid out unto William Hutchens a tract of one hundred and seven acres of land, on a small branch of Enoree river in Laurens County having such shape, marks, and boundaries as the above Plat represents, Survey, the 16th Oct. 1785, Robt. Hanna D^r.
 Recorded 16th Dec. 1785.



State of South Carolina, Pursuant to a warrant from John Thomas Esq. Commissioner of locations dated the 24th day of Oct. 1785, I have ad-measured and laid out unto John Howard a tract of land containing five hundred acres situate on a branch of Rabun's Creek the waters of Saluda river, bounded N. by Andrew Thomson's land, N.E. by Cob's land, S.E. by Henderson's land, E. by part by old lines, all other sides by vacant land and hath such shape form and marks as the above Plat represents, Survey, 3. Nov. 1785, - James Weyford D^r.

State of S^c Carolina,
 Pursuant to a warrant from John Thomas Esq. Commissioner of locations dated 23 of Nov. 1785, I have ad-measured and laid out unto Samuel J^r Abston a tract of four hundred and eight seven acres of land situate in Ninety six District about the old boundary, on the south fork of brushy Creek of Needy River and a branch of Saluda river, and hath such shape, marks, boundaries and boundaries as the above Plat represents, Survey, 15. Dec. 1785, - Recorded 16th Dec. 1785, Sent by Capt. M. A. to Mr. Abston, by J. P. Whitner D^r.



State of South Carolina,
 Pursuant to a warrant from John Thomas Esq. Commissioner of locations, I have ad-measured and laid out unto James Pickett a tract of 104 acres of land, situate in Union County, Ninety six District, below the ancient limits on the N. E. side of Enoree River, and hath such shape, marks, boundaries as the above Plat represents, Survey, 19th Oct. 1785, by Abel Pearson D^r.
 Recorded 21st Dec. 1785, Del. John Nix

