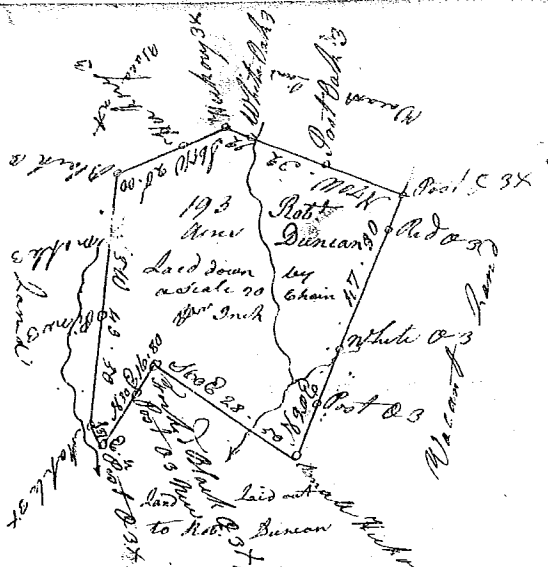


State of South Carolina

(139)

Pursuant to a Warrant

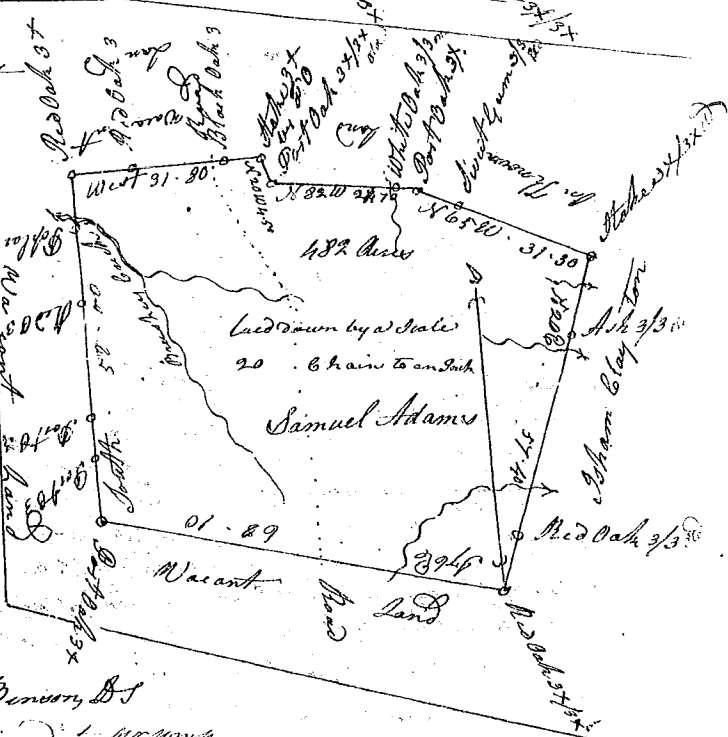
From John Thomas Esq: Commissioner of State
 dated 20 day of May 1785 I have Admeasured
 and laid out unto Robt. Duncan a Tract of
 Land containing One Hundred and Ninety Three
 Acres situated in Ninety Six District on Duncan
 Branch of Reedy River Bounding and Butting
 as the above Plat Represents
 Surveyed this 26 day of May 1785
 Recorded this 27 day of May 1785 Wm Benson Del
 Delivered to Robt Duncan



State of S Carolina

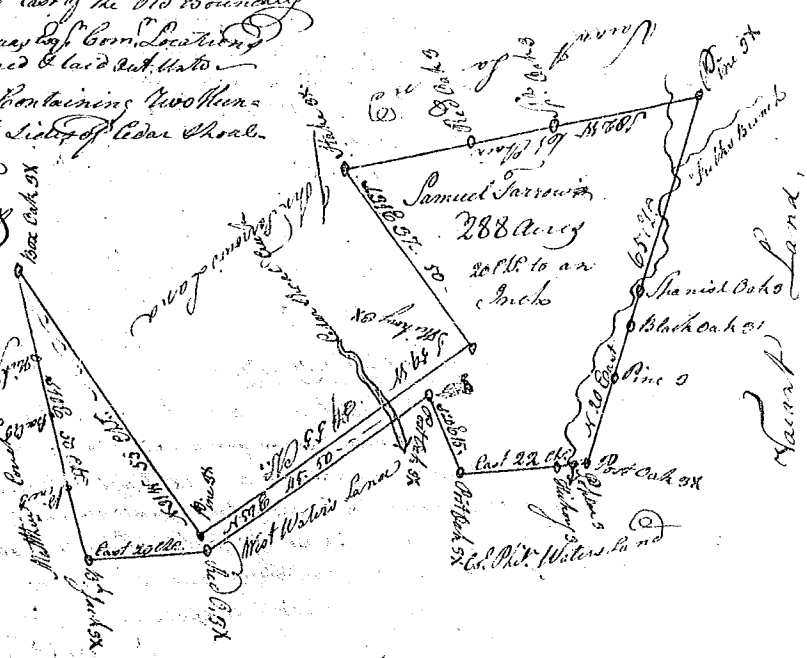
Pursuant to a Warrant

From John Thomas Esq: Commissioner of
 Locations dated the 25 day of April 1785 I have
 Admeasured and laid out unto Samuel
 Adams a Tract of Land containing Four
 Hundred and Eighty Two Acres situated
 in Ninety Six District, on the Branch
 of Bush's Creek of Saluda River by
 Branches of Doushey's back of Reedy
 River Bounding and Butting as the
 above Plat Represents



Surveyed this 25 day of May 1785 Wm Benson Del
 Recorded this 27 day of May 1785 Delivered to Wm Benson

State of S Carolina, Ninety Six District East of the Old Boundary
 Pursuant to a Warrant from John Thomas Esq: Comm: Locations
 dated the 28th May 1785, I have admeasured & laid out unto
 Samuel Farrow a Tract of Land containing Two Hundred
 & Eighty Eight Acres, lying on both sides of Cedar Creek
 Creek & on falls Branch waters of Innes
 River & hath the Sec'd shape marks &
 Boundaries as the annexed Plat
 Represents



Surveyed this 26 of May 1785
 And Thomson Del,
 Recorded this 28 May 1785
 Deliv. to Sam. Farrow