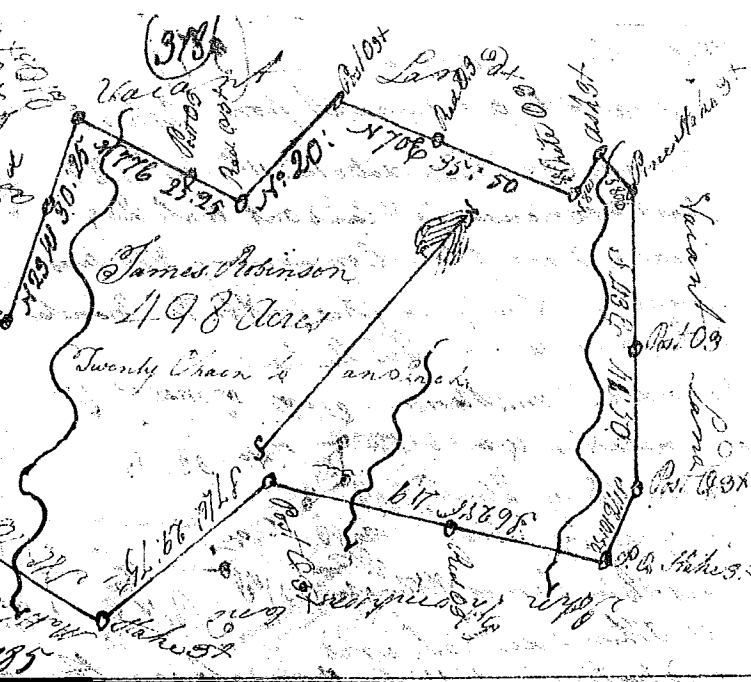
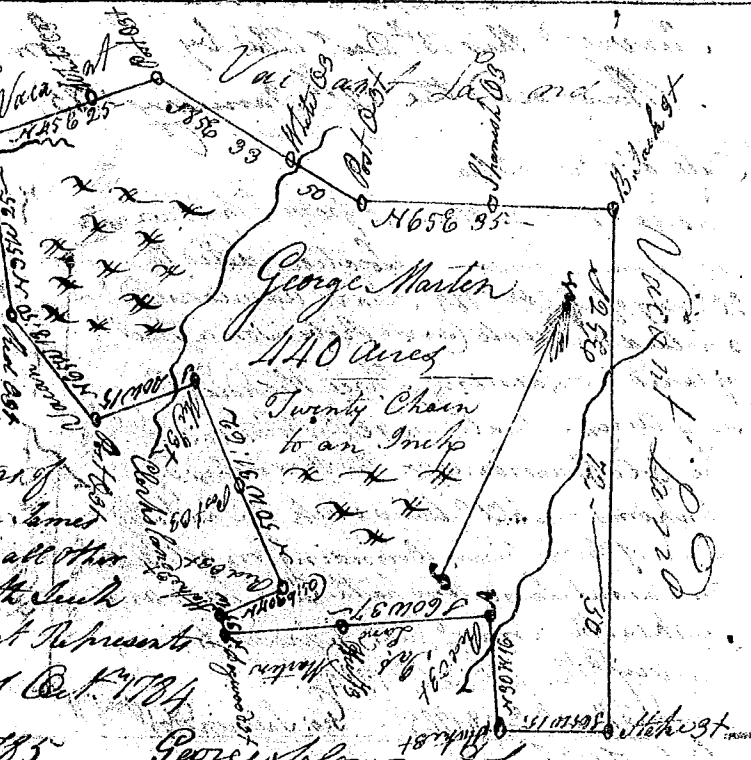


State of S. Carolina Pursuant to a Warrant from John Thomas Esq. Com. dated the 11th Oct. 1784. I have measured and laid out unto James Robinson a Tract of Land containing 298 Acres situated in the 96th District East of the Old Boundary on the Branches of Cheekly creek of Broad River bounding NW^y on Land laid out for by Thompson & Co. Vacant Land & Matthew Robinson's Land, all other sides on Vacant Land and North South Shape from Tomashes as the annexed plat Represents. Survey^d the 14th Oct. 1784
George Salmon D^s
Recorded the 13th Jan^y 1785



State of S. Carolina Pursuant to a Warrant from John Thomas Esq. Com. dated the 11th Oct. 1784. I have measured and laid out unto Geo. Martin a Tract of land containing Four hundred and forty acres situated in 96th District East of the Old Boundary on the Branches of Gilheys creek of Turkey Waters of Broad River bounding NW^y on James Martin's Land & on Clark's Land, all other sides on Vacant Land and North South Shape from Tomashes as the annexed plat Represents. Survey^d the 16th day of Oct. 1784
Recorded the 13th Jan^y 1785
George Salmon D^s



State of South Carolina Pursuant to a Warrant from John Thomas Esq. Com. dated the 18th day of Oct. 1784. I have measured and laid out unto James Nicoll a Tract of land containing Eighty seven acres situated in 96th District East of the Old Boundary on the Branches of Tyger River bounding NW^y on John Nicoll's Land, all other sides on Vacant Land and North South Shape from Tomashes as the annexed plat Represents. Survey^d the 5th Nov. 1784
Recorded the 13th Jan^y 1785
George Salmon D^s



State of South Carolina Pursuant to a Warrant from John Thomas Esq. Com. dated the 16th day of Oct. 1784. I have measured and laid out unto David Forrest a Tract of land containing one hundred acres situated in 96th District East of the Old Boundary on both sides of a Branch of Becks creek Waters of Broad River bounding on all the Vacant Land and North South Shape from Tomashes as the annexed plat Represents. Survey^d the 11th Oct. 1784
Recorded the 13th Jan^y 1785
George Salmon D^s

