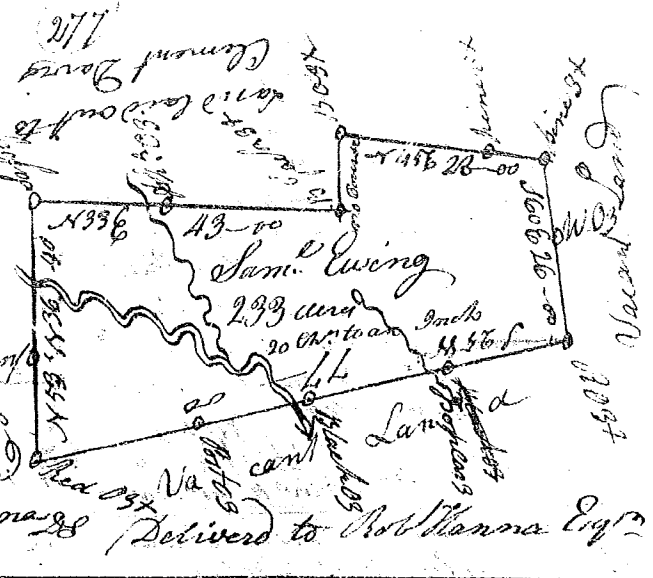


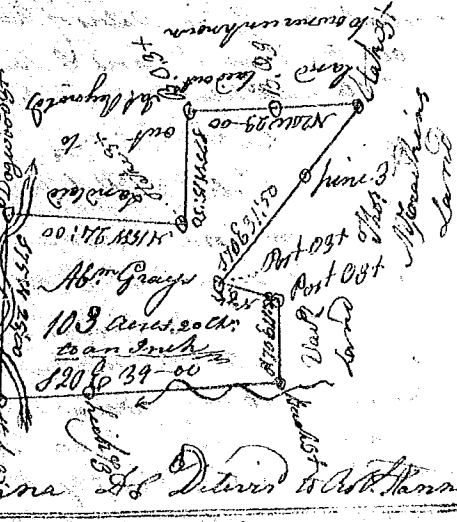
State of Carolina  
 Pursuant to a warrant from  
 John Thomas Esq. Com. Sec. in  
 9<sup>th</sup> District N<sup>o</sup> of Saluda River.  
 I have admeasured & laid out  
 unto Sam. Ewing a Tract of land  
 containing 233 Acres on a fork  
 of Indian Creek call<sup>d</sup> Adair's creek  
 Below the Indian Boundary. Bound  
 on land laid out to [unclear]  
 Davis, all other sides Vacant Land  
 & hath such shape & marks as the  
 annex<sup>d</sup> plat Represents Survey<sup>d</sup>  
 the 27<sup>th</sup> Oct. 1784 Robert [unclear]  
 Recorded the 29<sup>th</sup> Dec. 1784



State of Carolina  
 Pursuant to a warrant from John Thomas  
 Esq. Com. Sec. of locations in 9<sup>th</sup> Dis.  
 N<sup>o</sup> of Saluda River. I have admeasured  
 and laid out unto James Dillard a Tract  
 of land containing One Hundred & Sixty  
 Acres on a branch of Indian Creek call<sup>d</sup>  
 Bandy Lick branch below the Indian  
 Boundary Bounded on all sides on Vacant  
 Land and hath such shape & marks  
 as the annex<sup>d</sup> plat Represents  
 Survey<sup>d</sup> the 27<sup>th</sup> Oct. 1784  
 Recorded the 30<sup>th</sup> Dec. 1784 Robert [unclear]  
 Delivered to Robt. Thomas



State of Carolina Pursuant to a warrant  
 from John Thomas Esq. Com. Sec. locations in  
 Ninety six<sup>th</sup> District N<sup>o</sup> Saluda River. I have ad-  
 measured & laid out unto Abraham Gray  
 Tract of land containing One Hundred & Three  
 Acres on Indian Creek Below the Indian  
 Boundary. Bounded on W. on land laid out to  
 A. M. Pennington, S. on John Garrett & W. C.  
 on Thomas McGrath's N. on land the owner  
 Unknown. W. & N. on land laid out to Jas  
 Reynolds & hath such shape & marks as the  
 annex<sup>d</sup> plat Represents Survey<sup>d</sup> the 27<sup>th</sup> Oct. 1784  
 Recorded the 30<sup>th</sup> Dec. 1784 Robert Thomas Esq. Delivered to Robt. Thomas



State of Carolina Pursuant to a warrant  
 from John Thomas Esq. Com. Sec. I have admeasured  
 and laid out unto Benjamin Neighbours a Tract of  
 One thousand acres of land situated in Ninety six<sup>th</sup>  
 District Below the ancient limits on the S. side  
 of Broad River Bounded on N. W. on land laid  
 out to Genial Virgin & Co. on the S. Virgin & John  
 Valentin on S. on Jacob's Deal, all other sides  
 vacant & the River & hath such shape & marks  
 as the annex<sup>d</sup> plat Represents Survey<sup>d</sup> the 25<sup>th</sup> Oct. 1784  
 Recorded the 30<sup>th</sup> Dec. 1784 Ben. Glenn Esq.

