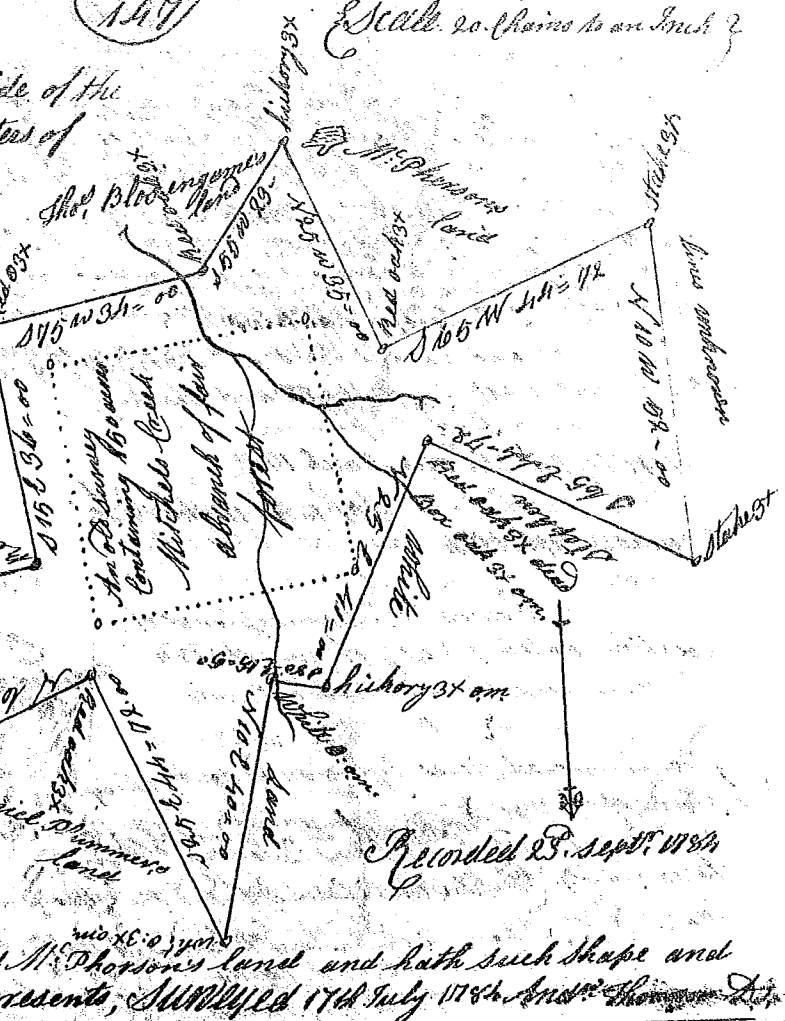


Scale 20 Chains to an Inch

State of South Carolina  
Ninety six District on the east side of the  
ancient boundary line on the waters of  
Fairforest

Pursuant to a warrant from under  
the hand and seal of John Thomas  
Esq. Commissioner of Locations  
on the North side of Saluda River  
dated the 15th July 1784, I have ad-  
-measured and laid out unto  
Philemon waters a tract  
of land containing three  
hundred and sixty  
acres lying on a  
creek called Mitchell's

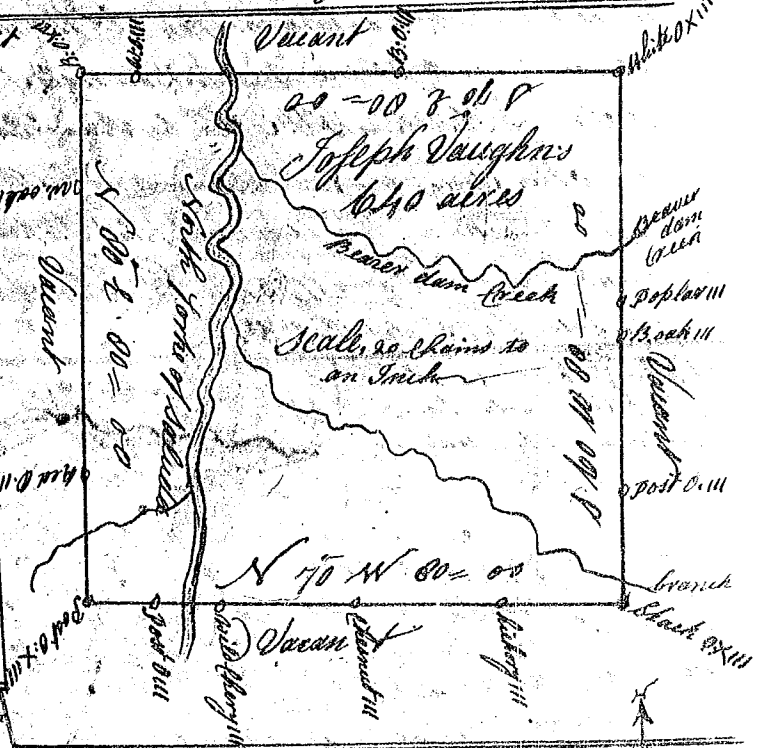
Creek bounded  
S.W. by Stephen  
White's land  
N by Daniel  
Plummer's land  
E & S by Moses Colier's land and  
William Plummer's land S. by  
Thomas Blossengame's land and M. Phorsen's land and hath such shape and  
Marks as the above Plat represents, Surveyed 17th July 1784. And: Thomson D.



State of South Carolina Ninety six District

Pursuant to a warrant from John Thomas  
Esq. Commissioner of Locations dated  
21 day of May 1784, I have admeasured  
and laid out unto Joseph Vaughn a  
tract of land on both sides of the North  
fork of Saluda River including the S.  
Vaughn's Improvement, bounded on  
every side by Vacant land, contain-  
ing six hundred and forty acres &  
hath such shape and Marks as the  
annexed plat represents

Surveyed 21th May 1784  
And: Thomson  
Recorded 23. sept. 1784



State of South Carolina 96 Dist

Pursuant to a warrant to me  
Directed by John Thomas Esq. Commissioner of Locations for  
the district of the Northside of Saluda River I have admeasured  
and laid out unto Joseph M. Locklen a tract of of land  
containing 102 acres situate lying and being above the  
ancient boundary line on the waters of Little River  
near site of an improvement Vacant land on every  
side and hath such shape and Marks as the annexed  
plat represents - Surveyed the 10th July 1784

Recorded 23. sept. 1784  
Jed Seaborn D.

