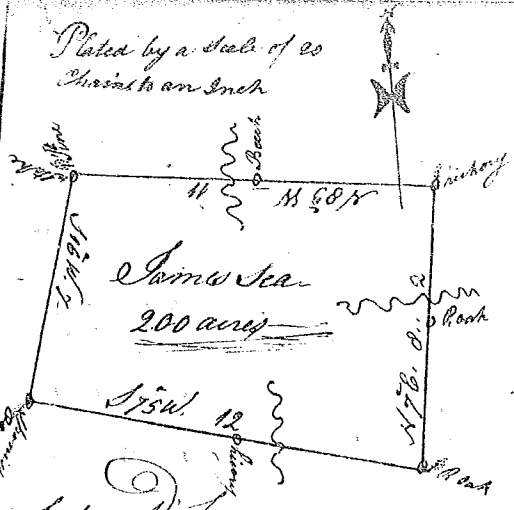


State of South Carolina 9th District (139)

Pursuant to a warrant to me Directed by John Thomas Esq. Commissioner of Locations for the District of the North side of Saluda River, I have surveyed and laid out unto James Lee, a tract of land containing two hundred acres, situate lying and being below the Ancient Boundary line on the Waters of North Sagar, bounded Swardly by Henry Rennie's land Ewardly by Henry Mathan Woods Land Nwardly Ephraim News's land Wwardly by a Survey Unknown, and has such shape and Marks as the Annexed plat Represents.

Surveyed by me the 23rd July 1784 James Seaborn Esq.

Recorded the 11th Sept. 1784



State of South Carolina 9th District (140)

Pursuant to a warrant to me Directed by John Thomas Esq. Commissioner of Locations in the the District of the N. side of Saluda River I have surveyed and laid out unto Henry Young a tract of land containing 100 acres, situate lying and being below the Ancient Boundary line, on both sides of a Road known by the Name of Open's Improvement, bounded Nwardly by one Hendersons land Swardly by one Dicksons land, and has such shape and marks as the Annexed plat Represents.

Surveyed by me the 30th August 1784 James Seaborn Esq.

Recorded the 11th Sept. 1784



State of South Carolina 9th District (141)

Pursuant to a warrant from John Thomas Esq. Commissioner of Locations in Ninety sixth District North Saluda River, bearing date the 22nd May 1784 - I have Admeasured and laid out unto Lewis Aaron a tract of Land containing two hundred & forty acres, on the South fork of Rayboons creek below the Indian line, bounded S.W. on Alex. Mayricks land & on land laid out to Wm. Martin N.W. & N.E. on land laid out to Thos. Calhoun and on the S.E. on land laid out to John M. Alenahan - and hath such shape and marks as the Annexed plat Represents.

Surveyed the 17th Aug. 1784 Robert Hanna Esq.

Recorded the 11th Sept. 1784

