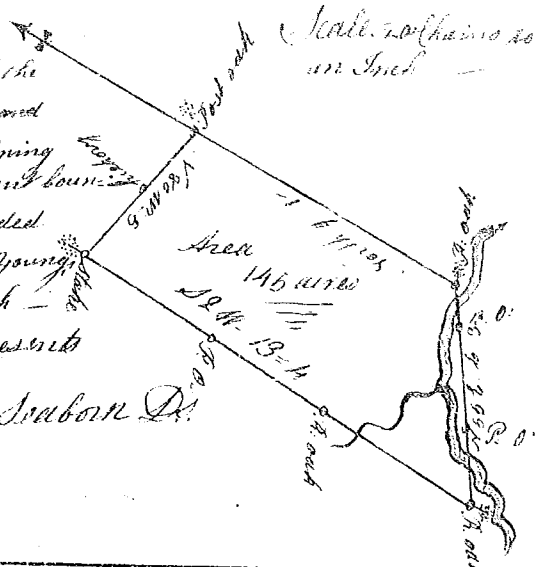


State of South Carolina

(125)

Pursuant to a warrant to me directed by John Thomas Esq. Commissioner of Locations for District of the North side of Saluda River, I have Surveyed and laid out unto William Bird a tract of Land containing 145 acres situate lying and being below the ancient boundary line on both sides of South Saluda bounded westwardly by one Hodens Land & southwardly by John Youngs Land all other sides Vacant Land and hath such shape and marks as the annexed Plat Represents Surveyed the 30th day of Aug. 1784

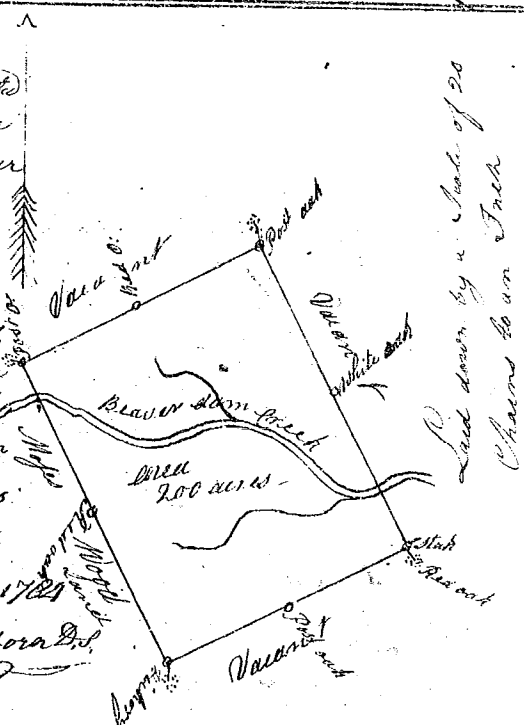
Recorded the 10th Sept. 1784, James Seaborn D.



State of South Carolina 36 District

Pursuant to a warrant to me Directed by John Thomas Esq. Commissioner of Locations for the District of the North side of Saluda River I have Surveyed and laid out Thomas Farmer a tract of Land containing two Hundred acres On the County as an Officer agreeable to an act of the General Assembly passed 1777, it being above the Ancient Boundary line on Beaver dam creek of Enoree. Bounded S. & W. by Moses Woods Land. all other sides on Vacant Land and hath such shape and marks as the Annexed Plat Represents

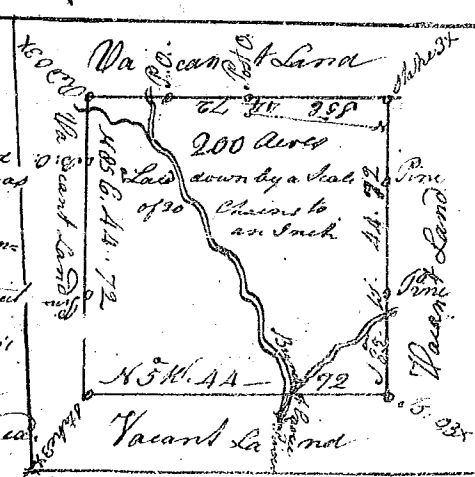
Surveyed by me the 2nd of June 1784
Recorded the 6th of Sept. 1784 James Seaborn D.



State of South Carolina

Pursuant to a warrant from John Thomas Esq. Commissioner of Locations dated 28th day of August 1784. I have Admeasured and laid out unto Robert Prince (Plays to the Prince Deceased) on the County as a Tract of two hundred acres of land situate on Ninety six District on the Branches of Enoree River North of Paris Mountain. Bounded on all sides on Vacant Land and hath such shape and marks as the Annexed Plat Represents. Surveyed the 30th day of Aug. 1784

Recorded the 6th day of Sept. 1784



Wm. Benson D.