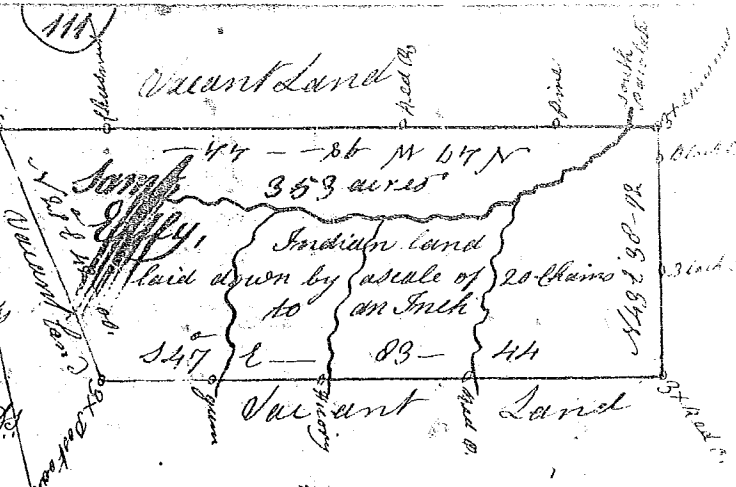
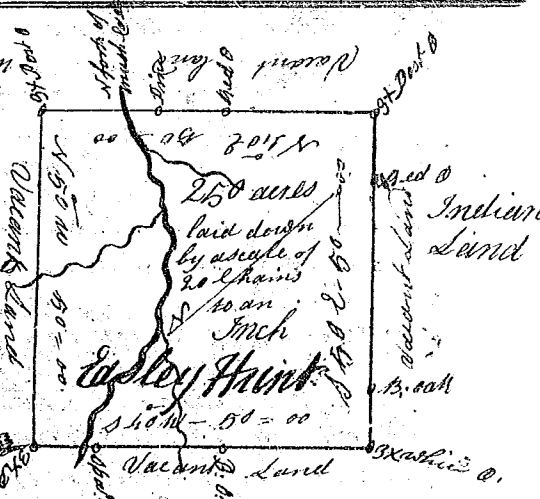


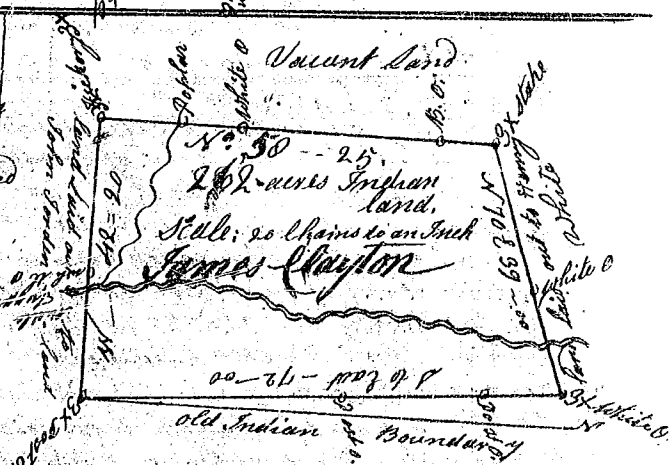
State of South Carolina
 Pursuant to a warrant from John Thomas Esq. Commissioner of Locations dated 21 May 1784 I have admeasured and laid out unto Samuel Easley a tract of three hundred and fifty three acres of land situate in Ninety Six District on South Pacolite River bounding on all sides on Vacant land and hath such shape and Marks as the above Plat represents, Surveyed the 26 day of May 1784
 Recorded 30 Aug. 1784 W. Benson D.
 Delivered to Capt. Gowan



State of South Carolina
 Pursuant to a warrant from John Thomas Esq. Commissioner of Locations dated the 26 day of May 1784 I have admeasured and laid out unto Easley Hunt a tract of two hundred and fifty acres of land situate in Ninety Six District on Mush Creek bounding on all sides by Vacant land hath such shape and Marks as the annexed Plat represents Surveyed the 30 day of June 1784
 Recorded the 30th of Aug. 1784 W. Benson D.



State of South Carolina
 Pursuant to a warrant from John Thomas Esq. Commissioner of Locations dated 21 May 1784 I have admeasured and laid out James Clayton a tract of Two hundred and sixty two acres of land situate in Ninety Six District bounded S.E. on land laid out to Henry White and N on land laid out to John Gordons land and on all other sides on Vacant land and hath shape and Marks as the annexed Plat represents Surveyed 16 July 1784
 Recorded 30 August 1784 W. Benson D.
 Delivered to Capt. Gowan



State of South Carolina
 Pursuant to a warrant from John Thomas Esq. Commissioner of Locations dated 21 May 1784 I have admeasured and laid out unto William Gowan Junr. a tract of two one hundred and sixteen acres of land situate in Ninety Six district on Mill Creek waters of South Pacolite River bounding on all sides on Vacant land and hath such shape and Marks as the annexed Plat represents Surveyed the 21 day of June 1784
 Recorded the 30 August 1784 W. Benson D.
 Delivered to Capt. Gowan

