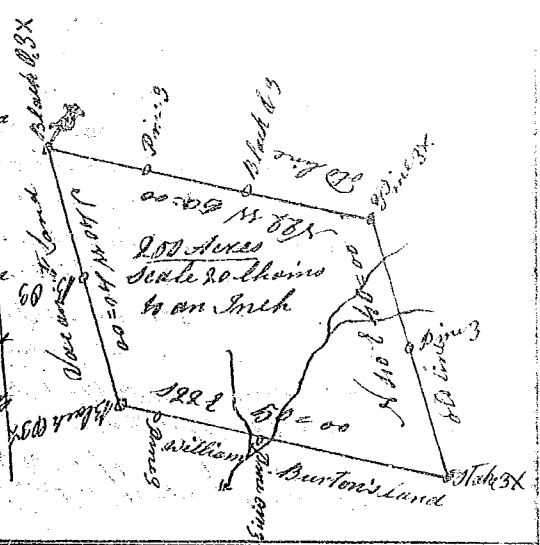


State of South Carolina Ninety Six District
Below the ancient Indian Boundary line.

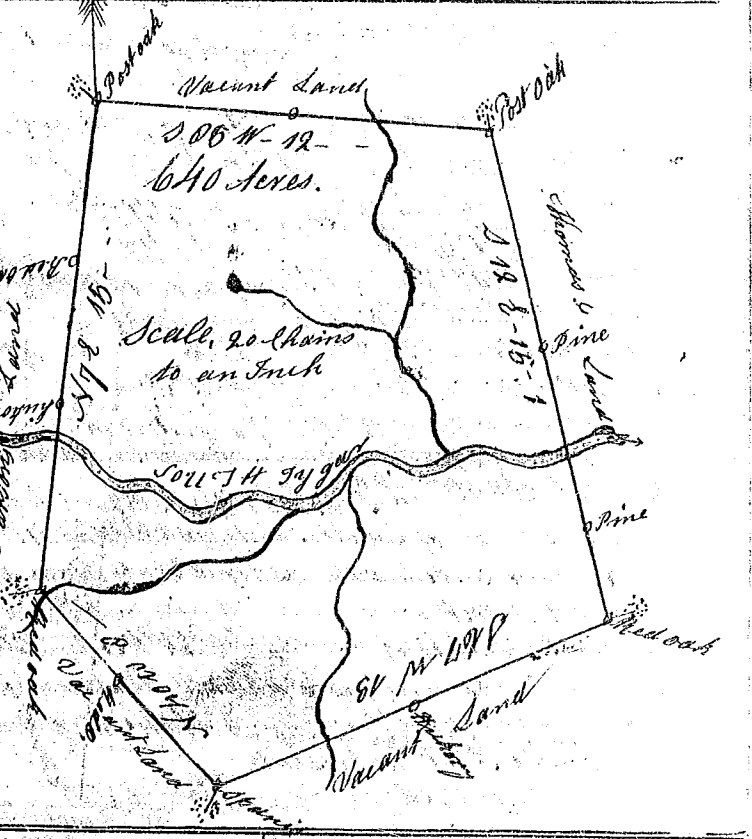
Pursuant to a warrant from John Thomas Esq. Commissioner of Locations for the north side of Saluda River bearing date the 1st day of June 1784 I have admeasured and laid out unto William Burton a tract of land containing Ten hundred acres lying and being on a branch called the Beaversdam a branch of Saluda River Bounded S.W. by vacant land and S.E. on William Burtons land and N.E. on vacant land and N.W. on old lines and hath such other shape and marks as the annexed Plat represents

Surveyed June the 11th day 1784 -
Recorded the 28 day Aug. 1784. Phil. Waters Esq.



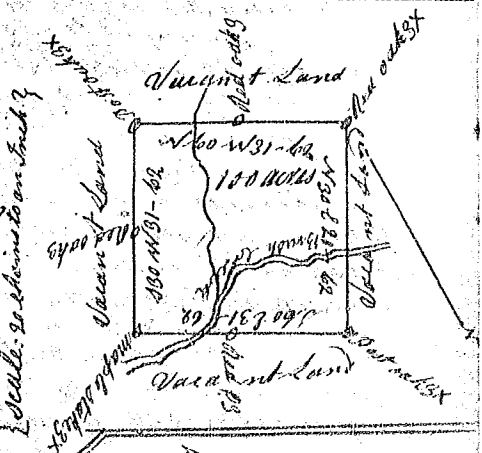
State of South Carolina 96 Dist.
Pursuant to a warrant to me directed by John Thomas Esq. Commissioner of Location for the district of the North Side of Saluda, I have surveyed and laid out unto Taverner Beale a tract of Land containing 640 acres situate lying and being above the old Indian Boundary on South Tyger River bounded N.E. by John Thomas Esq. land on the S.W. by Parsons land on every other side Vacant and hath such shape and marks as the above Plat represents

Surveyed by me 9th of July 1784
James Beaborn Esq.
Recorded the 28th of August 1784



State of South Carolina
Pursuant to a warrant from John Thomas Esq. Commissioner of Locations Dated the 29 of July 1784 I have admeasured and laid out unto Paul Abner a tract of Land containing one hundred acres situate in Ninety Six District West of the old Indian Boundary on both sides of Brush Creek of Enoree River Bounding on all sides by Vacant Land and hath such form and marks as the above Plat represents

Surveyed the 2d day of August 1784
George Salmon Esq.
Recorded the 28th day of August 1784



State of South Carolina
Pursuant to a warrant from John Thomas Esq. Commissioner of Locations dated 21 day of May 1784 I have admeasured and laid out unto William Brule a tract of seven acres of Land situate in Ninety Six district on Shoal Creek of the Enoree Bounding on all sides on Vacant land and hath such shape and marks as the above next plat represents

Surveyed the 14 day of July 1784
Recorded the 30 August 1784 -
Wm. Boyson Esq.

