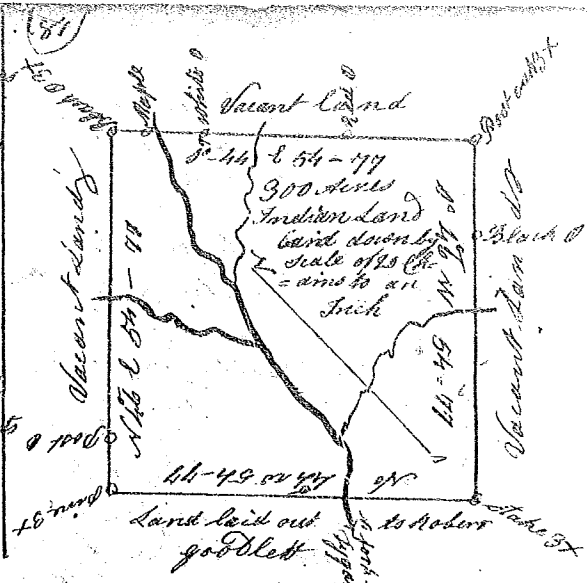


State of South Carolina

Pursuant to a warrant from John Thomas Esq. Commissioner of Locations. Bearing date 21st day of May 1784. I have admeasured and laid out unto Ephraim Rice a tract of three hundred acres of land situate in Ninety six district on the waters of the North Tyger River bounding to the south on lands laid out to Robert Goodlett Junr and on all other sides by Vacant lands, and hath such shape and marks as the above plat represents

Surveyed the 2^d day of June 1784 -

Wm Benson Esq.
Recorded the 7th of August 1784

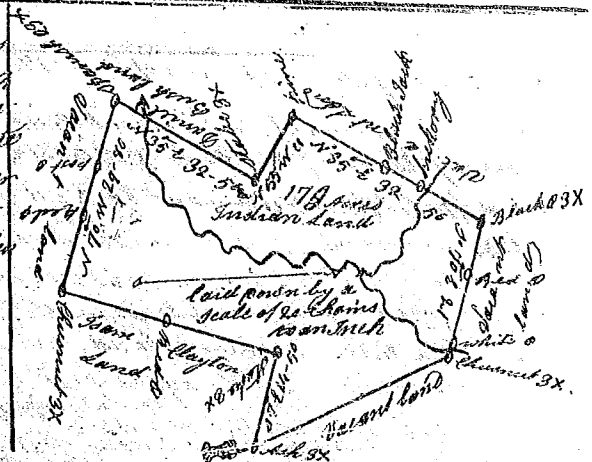


State of South Carolina

Pursuant to a warrant from John Thomas Esq. Commissioner of Locations dated the 21st day of May 1784. I have admeasured and laid out unto James Henderson a tract of one hundred seventy eight acres land situate in Ninety six district on the branches of Saluda River bounding S.E. on land laid out to Sam Clayton and Nov. of lands laid out to Daniel Brush, and all other sides by Vacant lands, and hath such form and shape as the above plat represents

Surveyed the 28th day of June 1784 -

Wm Benson Esq.
Recorded the 7th day of August 1784



South Carolina

Pursuant to a warrant from John Thomas Esq. Commissioner of Locations Dated the 21st day of May 1784. I have Admeasured and laid out unto John Clayton a tract of Two hundred and fifty Acres land situate in Ninety six district on the North Fork of Saluda River bounding to the NW on lands laid out to James McEllhenny and John Motley, and on all other sides on Vacant Land and hath such shape and marks as the above plat represents

Surveyed the 24th Day of May 1784 -

William Benson Esq.
Recorded the 17th day of August 1784

Del^d to Austin Clayton



State South Carolina

Pursuant to a warrant from John Thomas Esq. Commissioner of Locations dated the 21st day of May 1784. I have Admeasured and laid out unto Burren Campbell a tract of one hundred acres of Land situate in Ninety six district on the branches of South Tyger River bounding south west on land laid out to Thomas Davis and on all other sides by Vacant Land and hath such shape and marks as the above plat represents, Surveyed the 25th day June 1784

Recorded the 7th day August 1784 -

