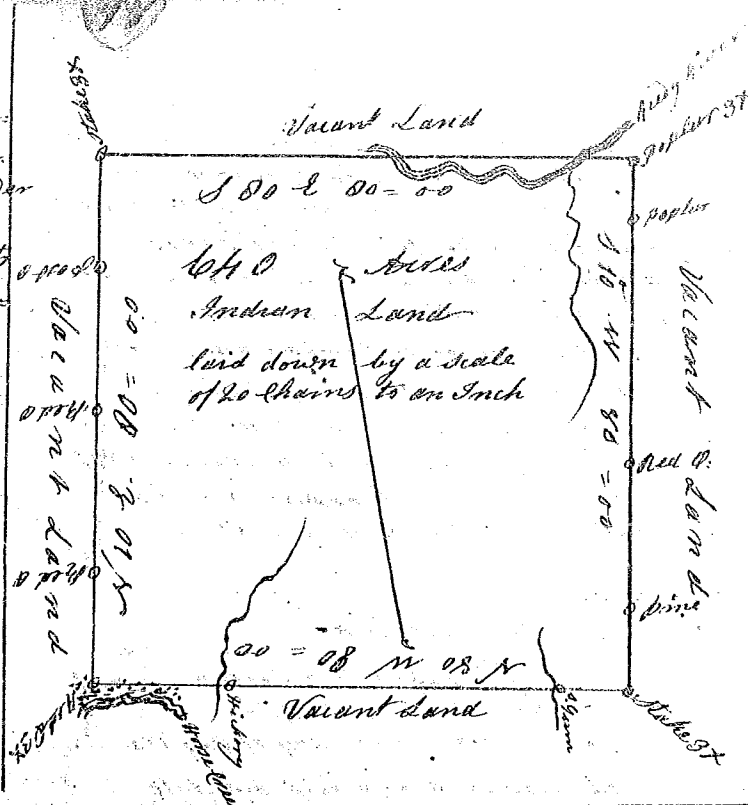


State of South Carolina,

Pursuant to a warrant from John Thomas Esq. Commissioner of Locations Dated May 24th 1784. I have admeasured and laid out unto Alexander Vernon a tract of six Hundred and forty Acres of Land situate in ninety six district on Reedy River bounding on all sides on Vacant Land and hath such Shape and Marks as the above plat Represents.

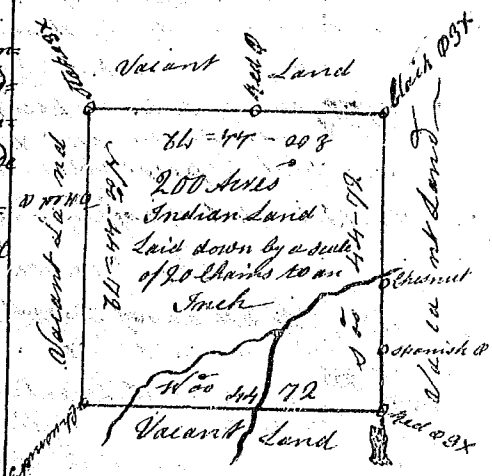
Surveyed the 9th day of July 1784
 Wm. Benson Esq.
 Recorded the 6th day of August 1784



State of South Carolina

Pursuant a warrant from John Thomas Esq. Commissioner of Locations dated 28th day of May 1784 I have admeasured and laid out unto John Lucas a tract of two hundred Acres of Land situate in ninety six district on the wild Cat Branch of St. Jeger River bounding on all sides on Vacant Land and hath such Shape and form as the above Plat Represents.

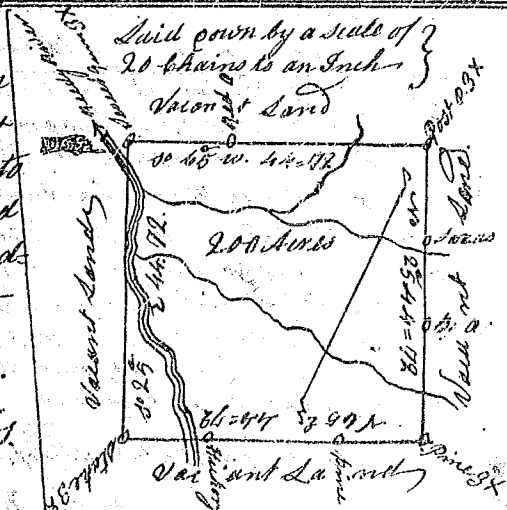
Surveyed the 30 day of June 1784.
 William Benson Esq.
 Recorded the 6th day Augt 1784



State of South Carolina

Pursuant to a warrant from John Thomas Esq. Commissioner of Locations Dated the 21st day of May 1784 I have admeasured and laid out unto Lewis Duwall a tract of Two hundred Acres of Land situate in ninety six District on Reedy River bounding on all Sides by Vacant Land, and hath such Shape and Marks as the above Plat Represents.

Surveyed the 12th day of June 1784
 Wm. Benson Esq.
 Recorded the 6th day of August 1784.



State of South Carolina

Pursuant to a warrant from John Thomas Esq. dated the 21st day of May 1784 I have admeasured and laid out unto John Moley a tract of one hundred acres of Land situate in ninety six district on the Branches North fork of Saluda River bounding to the NW on land laid out to James McIlhenny and on all other sides on Vacant land and hath such Shape form and Marks as the above plat Represents.

Surveyed the 24th day of May 1784
 Wm. Benson Esq.
 Recorded the 6th day of Augt 1784

